



University of
South Australia

Confined Space Register 2012

Original assessment by AECOM Australia Pty Ltd



City East

Brookman Building (B)

Version 1

Note: document links in blue underline text
Symbols on plans are also links

Version No.	Date	Amendment details	Approved by
1	23/10/2012	Original version as assessed by AECOM Australia Pty Ltd	-

**This Confined Space Register does not remove the requirement for
contractors to complete their own work-based risk assessment.**

Please [refer to Appendix](#) for other spaces assessed.

AECOM

Declassifying Statement

AECOM's assessment of a confined space was based on the information provided by the University of South Australia (UniSA) site representative and visual observation on the day. Risk assessment and hazard identification of a confined space was classified in accordance with:

- Work Health and Safety Regulations 2012 (SA);
- AS2865-2009.

Should UniSA wish to declassify a space which AECOM has deemed to be a 'Confined Space', *section 2.4.6 of AS 2865-2009* must be adhered to as stated below.

"For a space which has previously been classified as a confined space to be reclassified as a non-confined space, it needs to have undergone sufficient changes in structure or usages to eliminate (without the need for risk control measures) all possible sources of inherent hazard that define a confined space. Any changes to a confined space would have to be such that a subsequent risk assessment would determine that it no longer meets the criteria for a confined space".

Sufficient evidence to show that the statement above has been met must be provided to the University of South Australia Facilities Management Unit who has the appropriate privilege to alter the Confined Space Register.

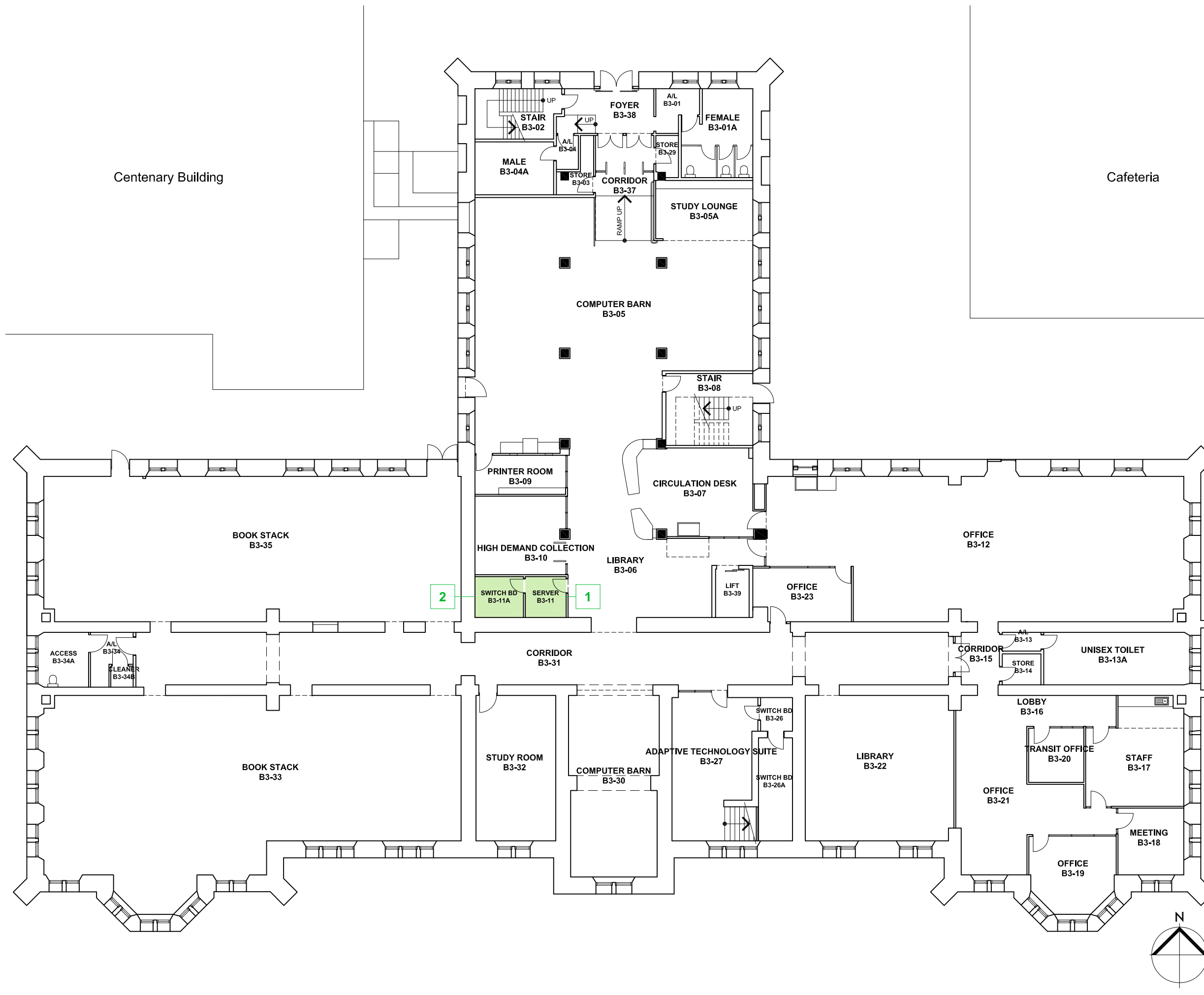
Space ID	Space description	Location	Confined Space according to Work Health and Safety Regulations 2012 (SA)?	Confined Space according to AS 2865-2009?	UniSA deemed Confined Space?	Comments	Link to details	Link to Plan
----------	-------------------	----------	---	---	------------------------------	----------	-----------------	--------------

No Confined Spaces assessed

All drawings remain the property of the University of South Australia and must be returned upon request. These drawings are subject to change without notice. Any errors and/or omissions should be reported to the Facilities Management Unit.

LEGEND

- **RED** Deemed Confined Space
- **GREEN** Deemed Non-Confined Space
- 1 ROOM
- 1 ABOVE OR BELOW CURRENT LEVEL
- 1 WITHIN ROOM
- ▲ 1 ACCESS TO ABOVE
- ▼ 1 ACCESS TO BELOW
- ▶ 1 ACCESS DIRECTION (relative to plan)



UNIVERSITY OF SOUTH AUSTRALIA

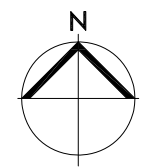
FACILITIES MANAGEMENT UNIT
 Level 2,
 101 Currie Street,
 Adelaide, SA 5000
 Phone 8302 2762
 Fax 8302 2708

CONFINED SPACE
CITY EAST CAMPUS

Building
BROOKMAN BUILDING B LEVEL 03

Scale: Not to scale	Drawn: SMG
Last Update: 30/01/2013	Plot Date: 06/09/2012 08:49

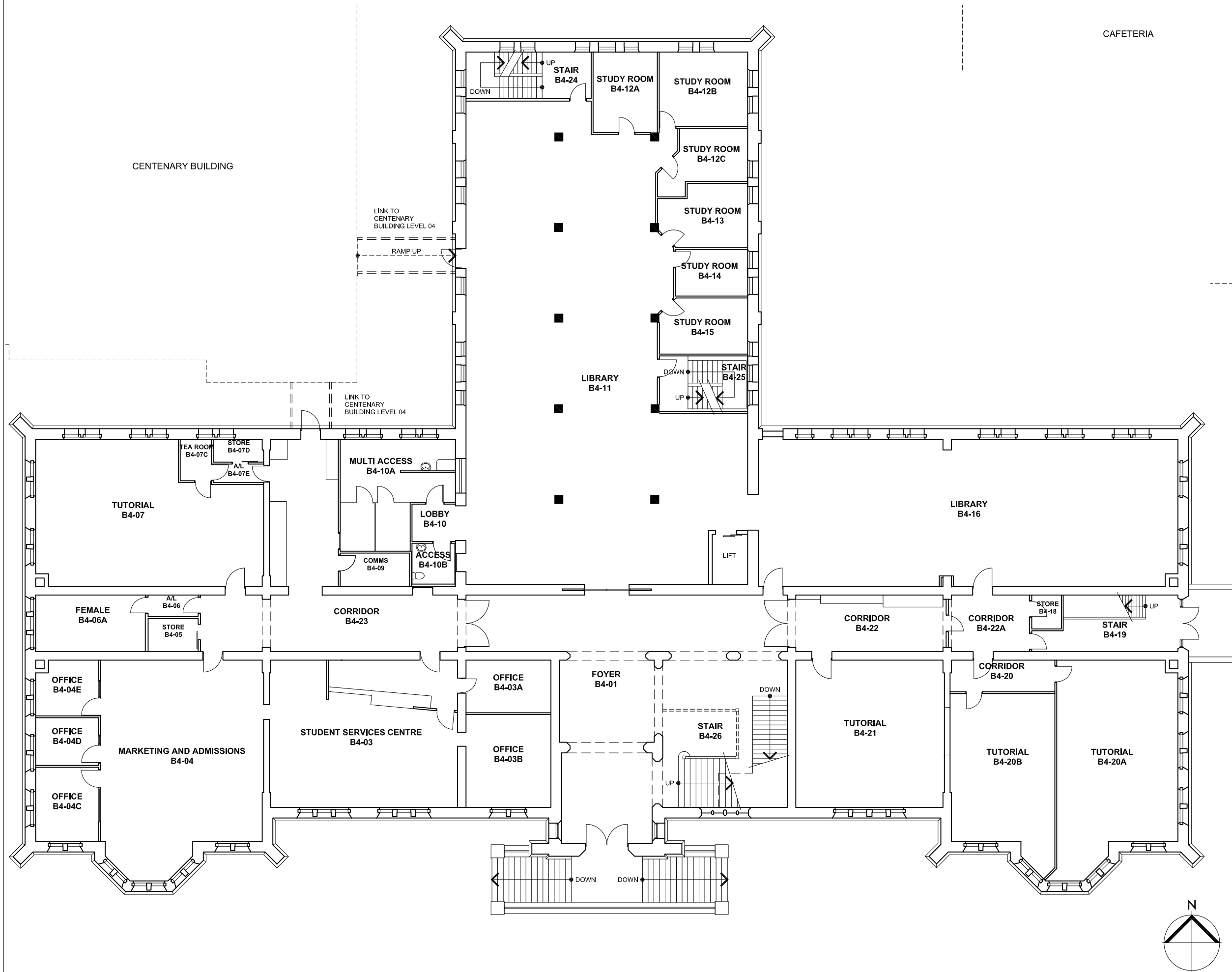
Drawing No.:	Revision:
H106CS03	A



All drawings remain the property of the University of South Australia and must be returned upon request. These drawings are subject to change without notice. Any errors and/or omissions should be reported to the Facilities Management Unit.

LEGEND

- Deemed Confined Space
- Deemed Non-Confined Space
- 1 ROOM
- 1 ABOVE OR BELOW CURRENT LEVEL
- 1 WITHIN ROOM
- ▲ 1 ACCESS TO ABOVE
- ▼ 1 ACCESS TO BELOW
- ▶ 1 ACCESS DIRECTION (relative to plan)



UNIVERSITY OF SOUTH AUSTRALIA

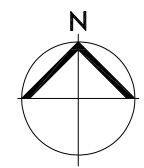
FACILITIES MANAGEMENT UNIT
 Level 2,
 101 Currie Street,
 Adelaide, SA 5000
 Phone 8302 2762
 Fax 8302 2708

CONFINED SPACE
 CITY EAST CAMPUS

Building
BROOKMAN BUILDING B LEVEL 04

Scale: Not to scale	Drawn: SMG
Last Update: 30/01/2013	Plot Date: 06/09/2012 08:49

Drawing No.:	Revision:
H106CS04	A



All drawings remain the property of the University of South Australia and must be returned upon request. These drawings are subject to change without notice. Any errors and/or omissions should be reported to the Facilities Management Unit.

LEGEND

RED Deemed Confined Space

GREEN Deemed Non-Confined Space

1 ROOM

1 ABOVE OR BELOW CURRENT LEVEL

1 WITHIN ROOM

1 ACCESS TO ABOVE

1 ACCESS TO BELOW

1 ACCESS DIRECTION (relative to plan)



UNIVERSITY OF SOUTH AUSTRALIA

FACILITIES MANAGEMENT UNIT

Level 2,
101 Currie Street,
Adelaide, SA 5000
Phone 8302 2762
Fax 8302 2708

CONFINED SPACE

CITY EAST CAMPUS

Building

BROOKMAN BUILDING B MEZZANINE

Scale:
Not to scale

Drawn:
SMG, jh

Last Update:
07/05/2014

Plot Date:
06/09/2012 08:49

Drawing No.:

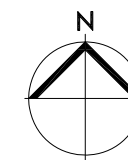
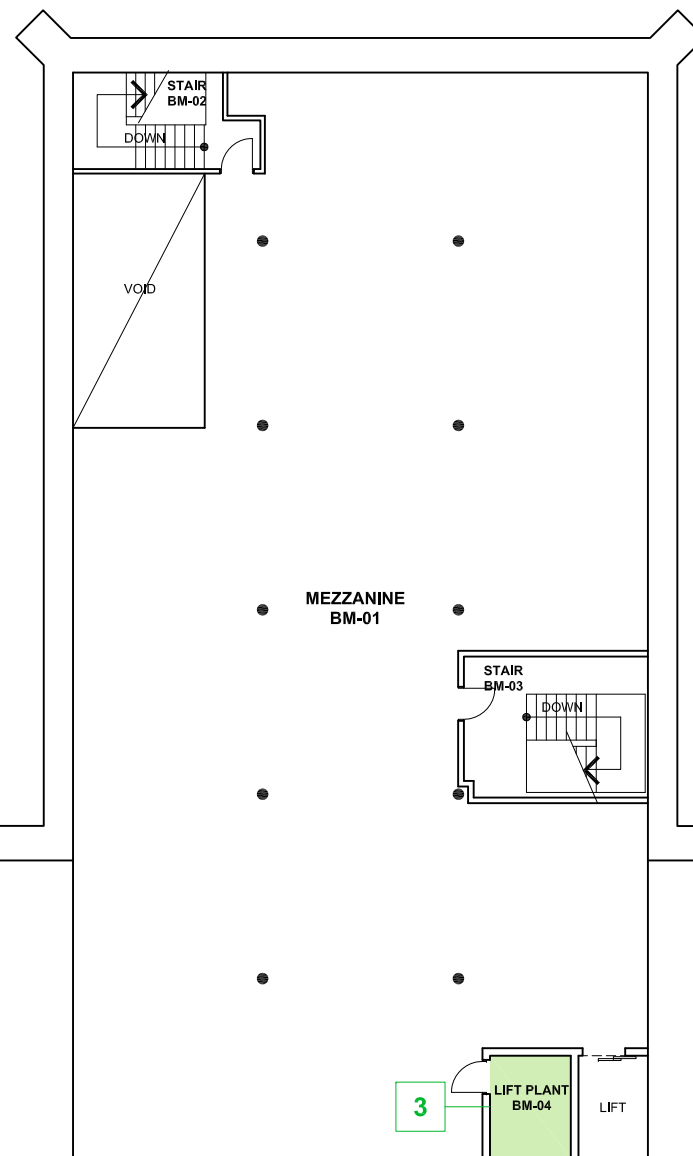
H106CS4M

Revision:

A

Centenary Building

Cafeteria



All drawings remain the property of the University of South Australia and must be returned upon request. These drawings are subject to change without notice. Any errors and/or omissions should be reported to the Facilities Management Unit.

LEGEND

RED Deemed Confined Space

GREEN Deemed Non-Confined Space

1 ROOM

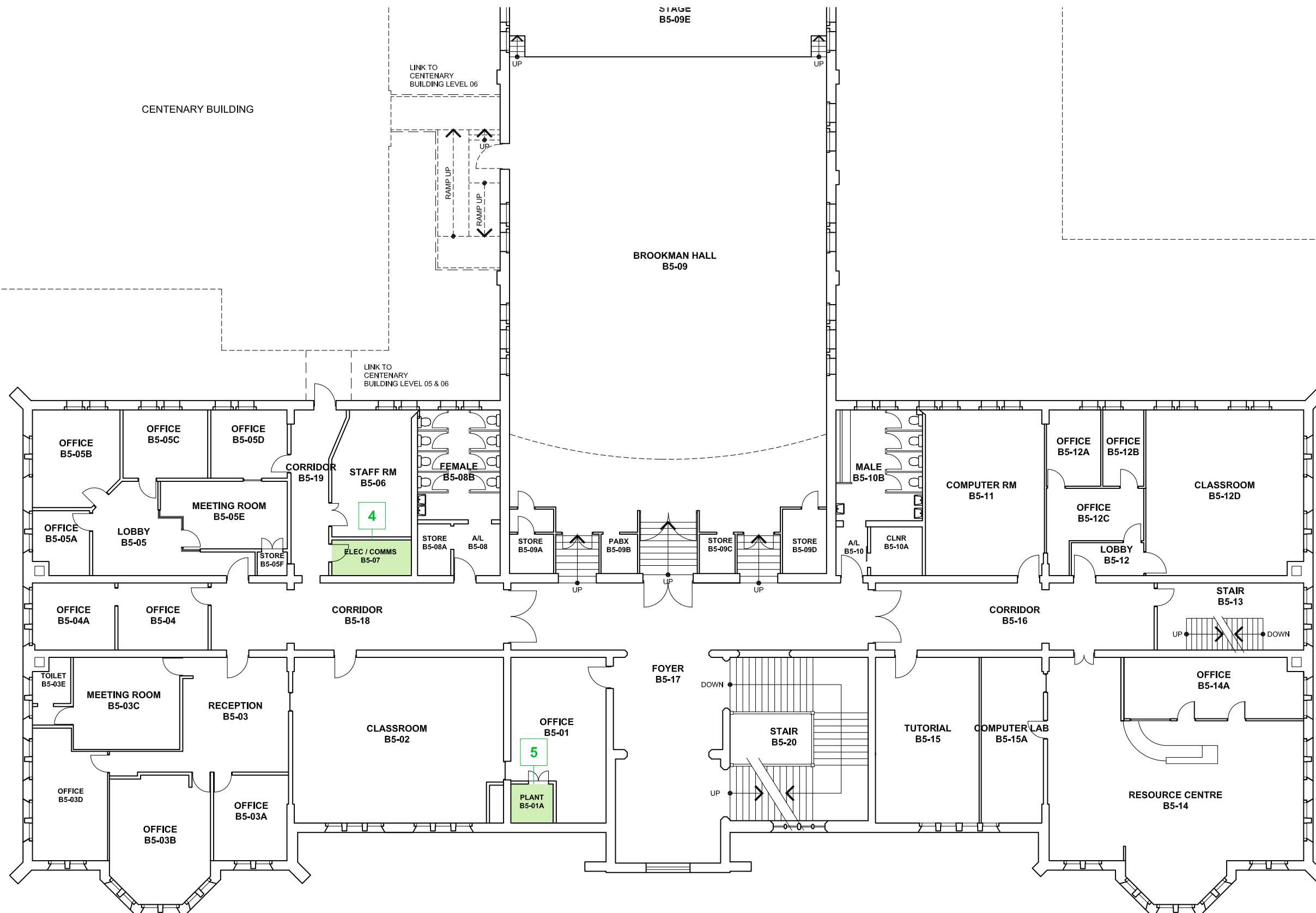
1 ABOVE OR BELOW CURRENT LEVEL

1 WITHIN ROOM

1 ACCESS TO ABOVE

1 ACCESS TO BELOW

1 ACCESS DIRECTION (relative to plan)



UNIVERSITY OF
SOUTH AUSTRALIA

FACILITIES
MANAGEMENT
UNIT

Level 2,
101 Currie Street,
Adelaide, SA 5000
Phone 8302 2762
Fax 8302 2708

CONFINED SPACE

CITY EAST CAMPUS

Building
**BROOKMAN
BUILDING B
LEVEL 05**

Scale:
Not to scale

Drawn:
SMG

Last Update:
30/01/2013

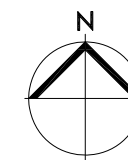
Plot Date:
06/09/2012 08:49

Drawing No.:

H106CS05

Revision:

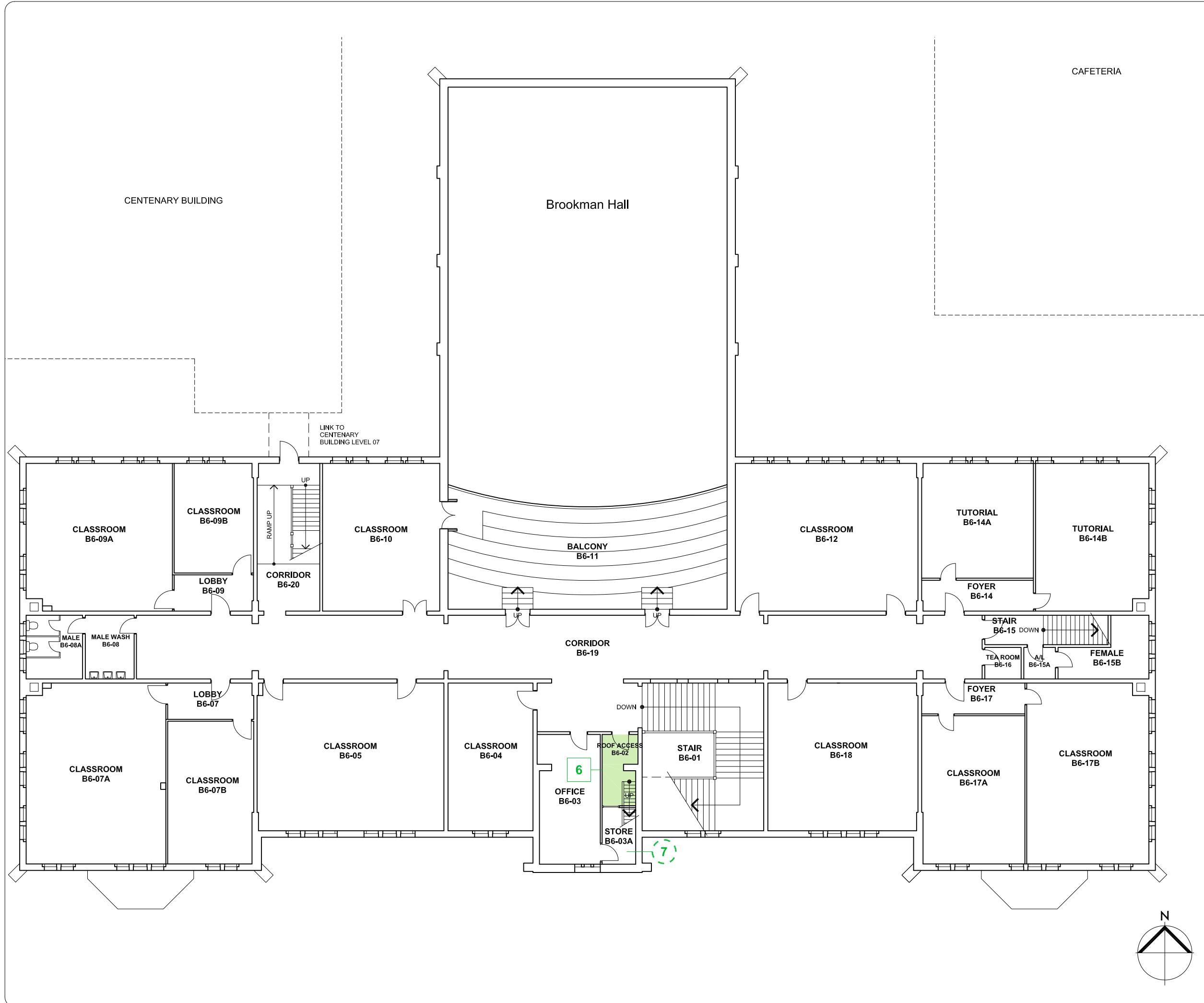
A



All drawings remain the property of the University of South Australia and must be returned upon request. These drawings are subject to change without notice. Any errors and/or omissions should be reported to the Facilities Management Unit.

LEGEND

- **RED** Deemed Confined Space
- **GREEN** Deemed Non-Confined Space
- 1 ROOM
- 1 ABOVE OR BELOW CURRENT LEVEL
- 1 WITHIN ROOM
- ▲ 1 ACCESS TO ABOVE
- ▼ 1 ACCESS TO BELOW
- ▶ 1 ACCESS DIRECTION (relative to plan)



UNIVERSITY OF SOUTH AUSTRALIA

FACILITIES MANAGEMENT UNIT
 Level 2,
 101 Currie Street,
 Adelaide, SA 5000
 Phone 8302 2762
 Fax 8302 2708

CONFINED SPACE
CITY EAST CAMPUS

Building
BROOKMAN BUILDING B LEVEL 06

Scale: Not to scale	Drawn: SMG
Last Update: 31/01/2013	Plot Date: 06/09/2012 08:49

Drawing No.:	Revision:
H106CS06	A

All drawings remain the property of the University of South Australia and must be returned upon request. These drawings are subject to change without notice. Any errors and/or omissions should be reported to the Facilities Management Unit.

LEGEND

RED Deemed Confined Space

GREEN Deemed Non-Confined Space

1 ROOM

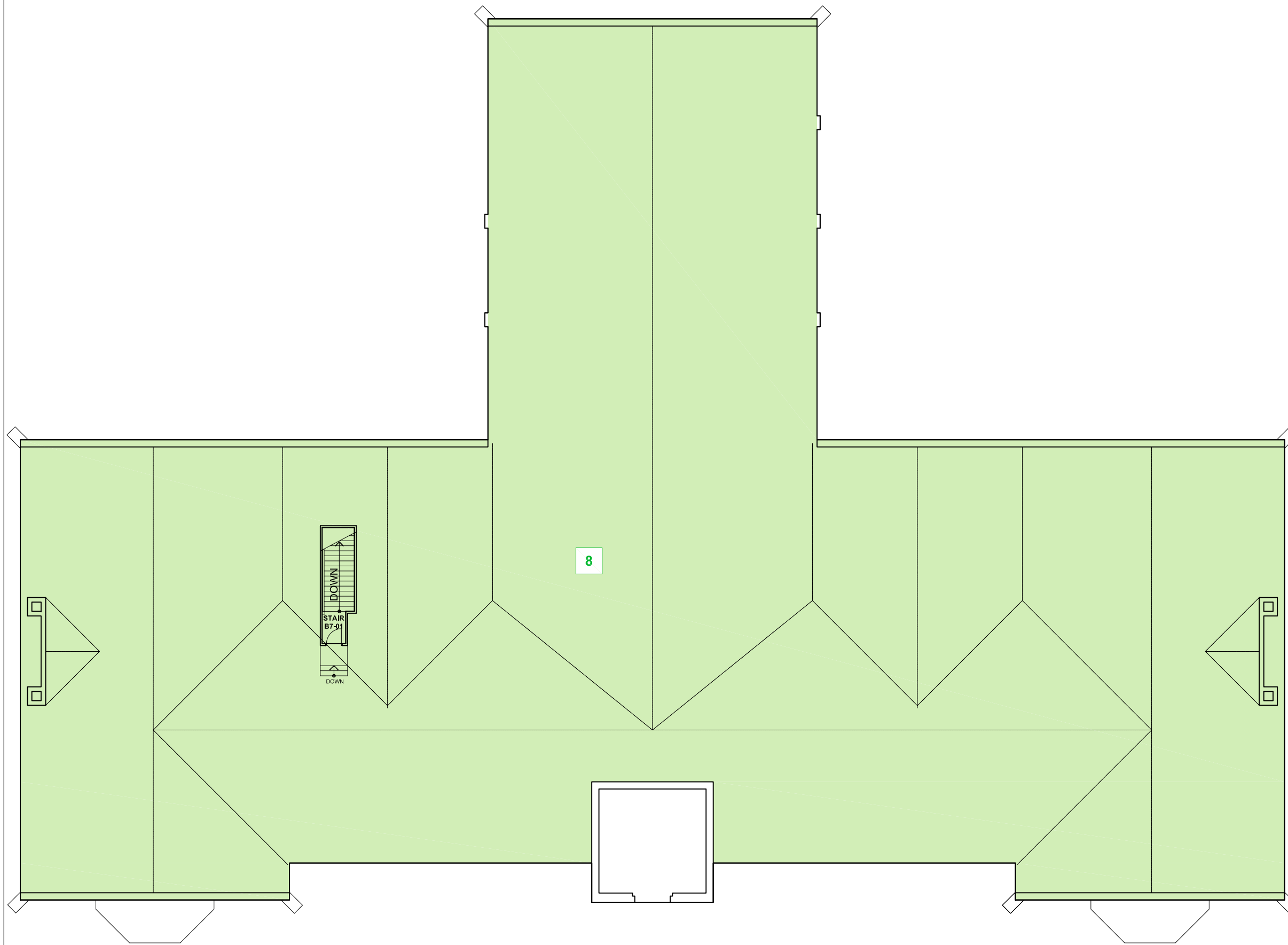
1 ABOVE OR BELOW CURRENT LEVEL

1 WITHIN ROOM

1 ACCESS TO ABOVE

1 ACCESS TO BELOW

1 ACCESS DIRECTION (relative to plan)



UNIVERSITY OF
SOUTH AUSTRALIA

**FACILITIES
MANAGEMENT
UNIT**

Level 2,
101 Currie Street,
Adelaide, SA 5000
Phone 8302 2762
Fax 8302 2708

CONFINED SPACE

CITY EAST CAMPUS

Building

**BROOKMAN
BUILDING B
LEVEL 07**

Scale:
Not to scale

Drawn:
SMG

Last Update:
31/01/2013

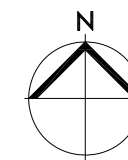
Plot Date:
06/09/2012 08:49

Drawing No.:

H106CS07

Revision:

A



Appendix
Register of other spaces assessed

City East
Brookman Building (B)

**This Register does not remove the requirement for
contractors to complete their own work-based risk assessment.**

Space ID	Space description	Location	Confined Space according to Work Health and Safety Regulations 2012 (SA)?	Confined Space according to AS 2865-2009?	UniSA deemed Confined Space?	Comments	Link to details	Link to Plan
CE-B-01	Server	B3-11	No	No	Non-Confined Space	This is a restricted space	CE-B-01	Level 3
CE-B-02	Electrical Distribution Board	B3-11a	No	No	Non-Confined Space	This is a restricted space	CE-B-02	Level 3
CE-B-03	Lift Motor Room	BM-04	No	No	Non-Confined Space	This is a restricted space	CE-B-03	Mezzanine
CE-B-04	Comms	B5-07	No	No	Non-Confined Space	This is a restricted space	CE-B-04	Level 5
CE-B-05	Plant Room	B5-01a	No	No	Non-Confined Space	This is a restricted space	CE-B-05	Level 5
CE-B-06	Plant Room	B6-02	No	No	Non-Confined Space	This is a restricted space	CE-B-06	Level 6
CE-B-07	Roof Access	via B6-02	No	No	Non-Confined Space	This is a restricted space	CE-B-07	Level 6
CE-B-08	Roof Space	via B7-01	No	No	Non-Confined Space	This is a restricted space	CE-B-08	Level 7

University of South Australia Confined Space Register 2012

Assessed by: AECOM Australia Pty Ltd

Date Assessed: 23/10/2012

Assessors: Daniel Alexander

Campus:	City East
Building:	B
Space ID:	CE-B-01
Description:	Server
Location:	B3-11

UniSA deemed: Non-Confined Space

UniSA deems a space Confined Space if either assessment criteria (shown below) results in Yes.

Number of Entrances:	1
Entry type:	Door / Gate
Access type:	Easy access

Comments:	This is a restricted space
Additional Hazards:	

[View on plan](#)

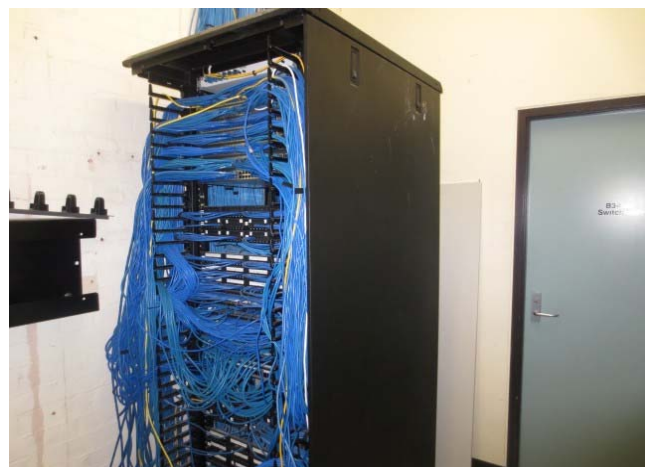
[Return to Register](#)

Category	Criteria: Work Health and Safety Regulations 2012 (SA)	Result
A	Is the space enclosed or partially enclosed?	Yes
B	Is not designed or intended primarily to be occupied by a person?	Yes
C	Is, or is designed or intended to be, at normal atmospheric pressure while any person is in the space?	Yes
D	Is or is likely to be a risk to health and safety from:	
i)	an atmosphere that does not have a safe oxygen level?	No
ii)	contaminants, including airborne gases, vapours and dusts, that may cause injury from fire or explosion?	No
iii)	harmful concentrations of any airborne contaminants?	No
iv)	engulfment?	No
Confined Space	If the answer to A and B and C and at least one of D i), ii), iii) or iv) is Yes, then the space is a Confined Space.	No

Category	Criteria: AS2865-2009	Result
A	Is the space enclosed or partially enclosed?	Yes
B	Is not intended or designed primarily for human occupancy?	Yes
C	Has an oxygen concentration outside the safe oxygen range?	No
D	Has a concentration of airborne contaminant that may cause impairment, loss of consciousness or asphyxiation?	No
E	Has a concentration of flammable airborne contaminant that may cause injury from fire or explosion?	No
F	Has a risk of engulfment in a stored free flowing solid or a rising level of liquid that may cause suffocation or drowning?	No
Confined Space	If the answer to A and B and at least one of C, D, E or F is Yes, then the space is a Confined Space.	No



Date	Amendment details	Approved by



University of South Australia Confined Space Register 2012

Assessed by: AECOM Australia Pty Ltd

Date Assessed: 23/10/2012

Assessors: Daniel Alexander

Campus:	City East
Building:	B
Space ID:	CE-B-02
Description:	Electrical Distribution Board
Location:	B3-11a

UniSA deemed:	Non-Confined Space
----------------------	---------------------------

UniSA deems a space Confined Space if either assessment criteria (shown below) results in Yes.

Number of Entrances:	1
Entry type:	Door / Gate
Access type:	Easy access

Comments:	This is a restricted space
Additional Hazards:	Electrical

[View on plan](#)

[Return to Register](#)

Category	Criteria: Work Health and Safety Regulations 2012 (SA)	Result
A	Is the space enclosed or partially enclosed?	Yes
B	Is not designed or intended primarily to be occupied by a person?	Yes
C	Is, or is designed or intended to be, at normal atmospheric pressure while any person is in the space?	Yes
D	Is or is likely to be a risk to health and safety from:	
i)	an atmosphere that does not have a safe oxygen level?	No
ii)	contaminants, including airborne gases, vapours and dusts, that may cause injury from fire or explosion?	No
iii)	harmful concentrations of any airborne contaminants?	No
iv)	engulfment?	No
Confined Space	If the answer to A and B and C and at least one of D i), ii), iii) or iv) is Yes, then the space is a Confined Space.	No

Category	Criteria: AS2865-2009	Result
A	Is the space enclosed or partially enclosed?	Yes
B	Is not intended or designed primarily for human occupancy?	Yes
C	Has an oxygen concentration outside the safe oxygen range?	No
D	Has a concentration of airborne contaminant that may cause impairment, loss of consciousness or asphyxiation?	No
E	Has a concentration of flammable airborne contaminant that may cause injury from fire or explosion?	No
F	Has a risk of engulfment in a stored free flowing solid or a rising level of liquid that may cause suffocation or drowning?	No
Confined Space	If the answer to A and B and at least one of C, D, E or F is Yes, then the space is a Confined Space.	No



Date	Amendment details	Approved by



University of South Australia Confined Space Register 2012

Assessed by: AECOM Australia Pty Ltd

Date Assessed: 23/10/2012

Assessors: Daniel Alexander

Campus:	City East
Building:	B
Space ID:	CE-B-03
Description:	Lift Motor Room
Location:	BM-04

UniSA deemed:	Non-Confined Space
----------------------	---------------------------

UniSA deems a space Confined Space if either assessment criteria (shown below) results in Yes.

Number of Entrances:	1
Entry type:	Door / Gate
Access type:	Easy access

Comments:	This is a restricted space
Additional Hazards:	Mechanical

[View on plan](#)

[Return to Register](#)

Category	Criteria: Work Health and Safety Regulations 2012 (SA)	Result
A	Is the space enclosed or partially enclosed?	Yes
B	Is not designed or intended primarily to be occupied by a person?	Yes
C	Is, or is designed or intended to be, at normal atmospheric pressure while any person is in the space?	Yes
D	Is or is likely to be a risk to health and safety from:	
i)	an atmosphere that does not have a safe oxygen level?	No
ii)	contaminants, including airborne gases, vapours and dusts, that may cause injury from fire or explosion?	No
iii)	harmful concentrations of any airborne contaminants?	No
iv)	engulfment?	No
Confined Space	If the answer to A and B and C and at least one of D i), ii), iii) or iv) is Yes, then the space is a Confined Space.	No

Category	Criteria: AS2865-2009	Result
A	Is the space enclosed or partially enclosed?	Yes
B	Is not intended or designed primarily for human occupancy?	Yes
C	Has an oxygen concentration outside the safe oxygen range?	No
D	Has a concentration of airborne contaminant that may cause impairment, loss of consciousness or asphyxiation?	No
E	Has a concentration of flammable airborne contaminant that may cause injury from fire or explosion?	No
F	Has a risk of engulfment in a stored free flowing solid or a rising level of liquid that may cause suffocation or drowning?	No
Confined Space	If the answer to A and B and at least one of C, D, E or F is Yes, then the space is a Confined Space.	No



Date	Amendment details	Approved by



University of South Australia Confined Space Register 2012

Assessed by: AECOM Australia Pty Ltd

Date Assessed: 23/10/2012

Assessors: Daniel Alexander

Campus:	City East
Building:	B
Space ID:	CE-B-04
Description:	Comms
Location:	B5-07

UniSA deemed:	Non-Confined Space
----------------------	---------------------------

UniSA deems a space Confined Space if either assessment criteria (shown below) results in Yes.

Number of Entrances:	1
Entry type:	Door / Gate
Access type:	Easy access

Comments:	This is a restricted space
Additional Hazards:	

[View on plan](#)

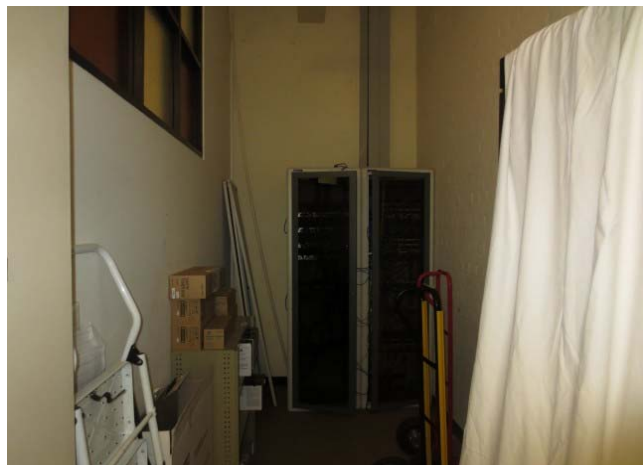
[Return to Register](#)

Category	Criteria: Work Health and Safety Regulations 2012 (SA)	Result
A	Is the space enclosed or partially enclosed?	Yes
B	Is not designed or intended primarily to be occupied by a person?	Yes
C	Is, or is designed or intended to be, at normal atmospheric pressure while any person is in the space?	Yes
D	Is or is likely to be a risk to health and safety from:	
i)	an atmosphere that does not have a safe oxygen level?	No
ii)	contaminants, including airborne gases, vapours and dusts, that may cause injury from fire or explosion?	No
iii)	harmful concentrations of any airborne contaminants?	No
iv)	engulfment?	No
Confined Space	If the answer to A and B and C and at least one of D i), ii), iii) or iv) is Yes, then the space is a Confined Space.	No

Category	Criteria: AS2865-2009	Result
A	Is the space enclosed or partially enclosed?	Yes
B	Is not intended or designed primarily for human occupancy?	Yes
C	Has an oxygen concentration outside the safe oxygen range?	No
D	Has a concentration of airborne contaminant that may cause impairment, loss of consciousness or asphyxiation?	No
E	Has a concentration of flammable airborne contaminant that may cause injury from fire or explosion?	No
F	Has a risk of engulfment in a stored free flowing solid or a rising level of liquid that may cause suffocation or drowning?	No
Confined Space	If the answer to A and B and at least one of C, D, E or F is Yes, then the space is a Confined Space.	No



Date	Amendment details	Approved by



University of South Australia Confined Space Register 2012

Assessed by: AECOM Australia Pty Ltd

Date Assessed: 23/10/2012

Assessors: Daniel Alexander

Campus:	City East
Building:	B
Space ID:	CE-B-05
Description:	Plant Room
Location:	B5-01a

UniSA deemed:	Non-Confined Space
----------------------	---------------------------

UniSA deems a space Confined Space if either assessment criteria (shown below) results in Yes.

Number of Entrances:	1
Entry type:	Door / Gate
Access type:	Easy access

Comments:	This is a restricted space
Additional Hazards:	Mechanical

[View on plan](#)

[Return to Register](#)

Category	Criteria: Work Health and Safety Regulations 2012 (SA)	Result
A	Is the space enclosed or partially enclosed?	Yes
B	Is not designed or intended primarily to be occupied by a person?	Yes
C	Is, or is designed or intended to be, at normal atmospheric pressure while any person is in the space?	Yes
D	Is or is likely to be a risk to health and safety from:	
i)	an atmosphere that does not have a safe oxygen level?	No
ii)	contaminants, including airborne gases, vapours and dusts, that may cause injury from fire or explosion?	No
iii)	harmful concentrations of any airborne contaminants?	No
iv)	engulfment?	No
Confined Space	If the answer to A and B and C and at least one of D i), ii), iii) or iv) is Yes, then the space is a Confined Space.	No

Category	Criteria: AS2865-2009	Result
A	Is the space enclosed or partially enclosed?	Yes
B	Is not intended or designed primarily for human occupancy?	Yes
C	Has an oxygen concentration outside the safe oxygen range?	No
D	Has a concentration of airborne contaminant that may cause impairment, loss of consciousness or asphyxiation?	No
E	Has a concentration of flammable airborne contaminant that may cause injury from fire or explosion?	No
F	Has a risk of engulfment in a stored free flowing solid or a rising level of liquid that may cause suffocation or drowning?	No
Confined Space	If the answer to A and B and at least one of C, D, E or F is Yes, then the space is a Confined Space.	No



Date	Amendment details	Approved by



University of South Australia Confined Space Register 2012

Assessed by: AECOM Australia Pty Ltd

Date Assessed: 23/10/2012

Assessors: Daniel Alexander

Campus:	City East
Building:	B
Space ID:	CE-B-06
Description:	Plant Room
Location:	B6-02

UniSA deemed:	Non-Confined Space
----------------------	---------------------------

UniSA deems a space Confined Space if either assessment criteria (shown below) results in Yes.

Number of Entrances:	1
Entry type:	Door / Gate
Access type:	Stair

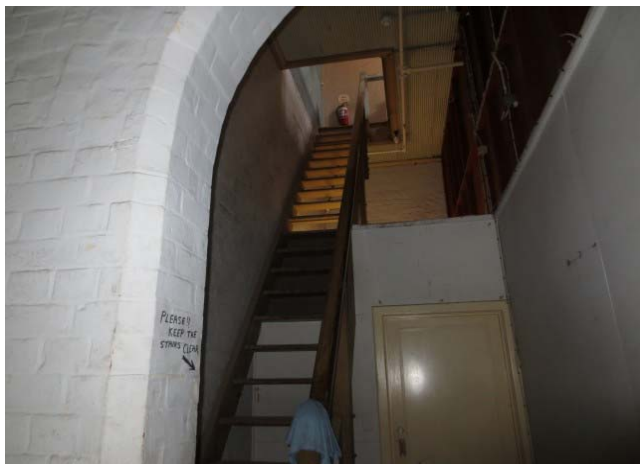
Comments:	This is a restricted space
Additional Hazards:	Slips trips and falls, Mechanical

[View on plan](#)

[Return to Register](#)

Category	Criteria: Work Health and Safety Regulations 2012 (SA)	Result
A	Is the space enclosed or partially enclosed?	Yes
B	Is not designed or intended primarily to be occupied by a person?	Yes
C	Is, or is designed or intended to be, at normal atmospheric pressure while any person is in the space?	Yes
D	Is or is likely to be a risk to health and safety from:	
i)	an atmosphere that does not have a safe oxygen level?	No
ii)	contaminants, including airborne gases, vapours and dusts, that may cause injury from fire or explosion?	No
iii)	harmful concentrations of any airborne contaminants?	No
iv)	engulfment?	No
Confined Space	If the answer to A and B and C and at least one of D i), ii), iii) or iv) is Yes, then the space is a Confined Space.	No

Category	Criteria: AS2865-2009	Result
A	Is the space enclosed or partially enclosed?	Yes
B	Is not intended or designed primarily for human occupancy?	Yes
C	Has an oxygen concentration outside the safe oxygen range?	No
D	Has a concentration of airborne contaminant that may cause impairment, loss of consciousness or asphyxiation?	No
E	Has a concentration of flammable airborne contaminant that may cause injury from fire or explosion?	No
F	Has a risk of engulfment in a stored free flowing solid or a rising level of liquid that may cause suffocation or drowning?	No
Confined Space	If the answer to A and B and at least one of C, D, E or F is Yes, then the space is a Confined Space.	No



Date	Amendment details	Approved by

University of South Australia Confined Space Register 2012

Assessed by: AECOM Australia Pty Ltd

Date Assessed: 23/10/2012

Assessors: Daniel Alexander

Campus:	City East
Building:	B
Space ID:	CE-B-07
Description:	Roof Access
Location:	via B6-02

UniSA deemed:	Non-Confined Space
----------------------	--------------------

UniSA deems a space Confined Space if either assessment criteria (shown below) results in Yes.

Number of Entrances:	1
Entry type:	Door / Gate
Access type:	Stair

Comments:	This is a restricted space
Additional Hazards:	Slips trips and falls, Non ionising radiation, Manual handling, Constrained movement

[View on plan](#)

[Return to Register](#)

Category	Criteria: Work Health and Safety Regulations 2012 (SA)	Result
A	Is the space enclosed or partially enclosed?	Yes
B	Is not designed or intended primarily to be occupied by a person?	Yes
C	Is, or is designed or intended to be, at normal atmospheric pressure while any person is in the space?	Yes
D	Is or is likely to be a risk to health and safety from:	
i)	an atmosphere that does not have a safe oxygen level?	No
ii)	contaminants, including airborne gases, vapours and dusts, that may cause injury from fire or explosion?	No
iii)	harmful concentrations of any airborne contaminants?	No
iv)	engulfment?	No
Confined Space	If the answer to A and B and C and at least one of D i), ii), iii) or iv) is Yes, then the space is a Confined Space.	No

Category	Criteria: AS2865-2009	Result
A	Is the space enclosed or partially enclosed?	Yes
B	Is not intended or designed primarily for human occupancy?	Yes
C	Has an oxygen concentration outside the safe oxygen range?	No
D	Has a concentration of airborne contaminant that may cause impairment, loss of consciousness or asphyxiation?	No
E	Has a concentration of flammable airborne contaminant that may cause injury from fire or explosion?	No
F	Has a risk of engulfment in a stored free flowing solid or a rising level of liquid that may cause suffocation or drowning?	No
Confined Space	If the answer to A and B and at least one of C, D, E or F is Yes, then the space is a Confined Space.	No



Date	Amendment details	Approved by

University of South Australia Confined Space Register 2012

Assessed by: AECOM Australia Pty Ltd

Date Assessed: 16/02/2014

Assessors: Daniel Alexander

Campus:	City East
Building:	B
Space ID:	CE-B-08
Description:	Roof Space
Location:	via B7-01

UniSA deemed:	Non-Confined Space
----------------------	---------------------------

UniSA deems a space Confined Space if either assessment criteria (shown below) results in Yes.

Number of Entrances:	1
Entry type:	Door / Gate
Access type:	Stair

Comments:	This is a restricted space
Additional Hazards:	Slips trips and falls, Non ionising radiation, Manual handling, Constrained movement

[View on plan](#)

[Return to Register](#)

Category	Criteria: Work Health and Safety Regulations 2012 (SA)	Result
A	Is the space enclosed or partially enclosed?	Yes
B	Is not designed or intended primarily to be occupied by a person?	Yes
C	Is, or is designed or intended to be, at normal atmospheric pressure while any person is in the space?	Yes
D	Is or is likely to be a risk to health and safety from:	
i)	an atmosphere that does not have a safe oxygen level?	No
ii)	contaminants, including airborne gases, vapours and dusts, that may cause injury from fire or explosion?	No
iii)	harmful concentrations of any airborne contaminants?	No
iv)	engulfment?	No
Confined Space	If the answer to A and B and C and at least one of D i), ii), iii) or iv) is Yes, then the space is a Confined Space.	No

Category	Criteria: AS2865-2009	Result
A	Is the space enclosed or partially enclosed?	Yes
B	Is not intended or designed primarily for human occupancy?	Yes
C	Has an oxygen concentration outside the safe oxygen range?	No
D	Has a concentration of airborne contaminant that may cause impairment, loss of consciousness or asphyxiation?	No
E	Has a concentration of flammable airborne contaminant that may cause injury from fire or explosion?	No
F	Has a risk of engulfment in a stored free flowing solid or a rising level of liquid that may cause suffocation or drowning?	No
Confined Space	If the answer to A and B and at least one of C, D, E or F is Yes, then the space is a Confined Space.	No



Date	Amendment details	Approved by