



University of
South Australia

Confined Space Register 2012

Original assessment by AECOM Australia Pty Ltd



City West

Elton Mayo Building (EM)

Version 1

Note: document links in blue underline text
Symbols on plans are also links

Version No.	Date	Amendment details	Approved by
1	08/10/2012	Original version as assessed by AECOM Australia Pty Ltd	-

**This Confined Space Register does not remove the requirement for
contractors to complete their own work-based risk assessment.**

Please [refer to Appendix](#) for other spaces assessed.

AECOM

Declassifying Statement

AECOM's assessment of a confined space was based on the information provided by the University of South Australia (UniSA) site representative and visual observation on the day. Risk assessment and hazard identification of a confined space was classified in accordance with:

- Work Health and Safety Regulations 2012 (SA);
- AS2865-2009.

Should UniSA wish to declassify a space which AECOM has deemed to be a 'Confined Space', *section 2.4.6 of AS 2865-2009* must be adhered to as stated below.

"For a space which has previously been classified as a confined space to be reclassified as a non-confined space, it needs to have undergone sufficient changes in structure or usages to eliminate (without the need for risk control measures) all possible sources of inherent hazard that define a confined space. Any changes to a confined space would have to be such that a subsequent risk assessment would determine that it no longer meets the criteria for a confined space".

Sufficient evidence to show that the statement above has been met must be provided to the University of South Australia Facilities Management Unit who has the appropriate privilege to alter the Confined Space Register.

Space ID	Space description	Location	Confined Space according to Work Health and Safety Regulations 2012 (SA)?	Confined Space according to AS 2865-2009?	UniSA deemed Confined Space?	Comments	Link to details	Link to Plan
CW-EM-01	Storage Area	EM1-04	Yes	Yes	Confined Space		CW-EM-01	Level 1

University of South Australia Confined Space Register 2012

Assessed by: AECOM Australia Pty Ltd

Date Assessed: 08/10/2012

Assessors: Daniel Alexander

Campus:	City West
Building:	EM
Space ID:	CW-EM-01
Description:	Storage Area
Location:	EM1-04

UniSA deemed:	Confined Space
----------------------	-----------------------

UniSA deems a space Confined Space if either assessment criteria (shown below) results in Yes.

Number of Entrances:	1
Entry type:	Door / Gate
Access type:	Easy access

Comments:	
Additional Hazards:	Low oxygen, Asphyxiant, Head impact, Slips trips and falls, Constrained movement

[View on plan](#)

[Return to Register](#)

Category	Criteria: Work Health and Safety Regulations 2012 (SA)	Result
A	Is the space enclosed or partially enclosed?	Yes
B	Is not designed or intended primarily to be occupied by a person?	Yes
C	Is, or is designed or intended to be, at normal atmospheric pressure while any person is in the space?	Yes
D	Is or is likely to be a risk to health and safety from:	
i)	an atmosphere that does not have a safe oxygen level?	Yes
ii)	contaminants, including airborne gases, vapours and dusts, that may cause injury from fire or explosion?	Yes
iii)	harmful concentrations of any airborne contaminants?	No
iv)	engulfment?	No
Confined Space	If the answer to A and B and C and at least one of D i), ii), iii) or iv) is Yes, then the space is a Confined Space.	Yes

Category	Criteria: AS2865-2009	Result
A	Is the space enclosed or partially enclosed?	Yes
B	Is not intended or designed primarily for human occupancy?	Yes
C	Has an oxygen concentration outside the safe oxygen range?	Yes
D	Has a concentration of airborne contaminant that may cause impairment, loss of consciousness or asphyxiation?	Yes
E	Has a concentration of flammable airborne contaminant that may cause injury from fire or explosion?	No
F	Has a risk of engulfment in a stored free flowing solid or a rising level of liquid that may cause suffocation or drowning?	No
Confined Space	If the answer to A and B and at least one of C, D, E or F is Yes, then the space is a Confined Space.	Yes



Date	Amendment details	Approved by



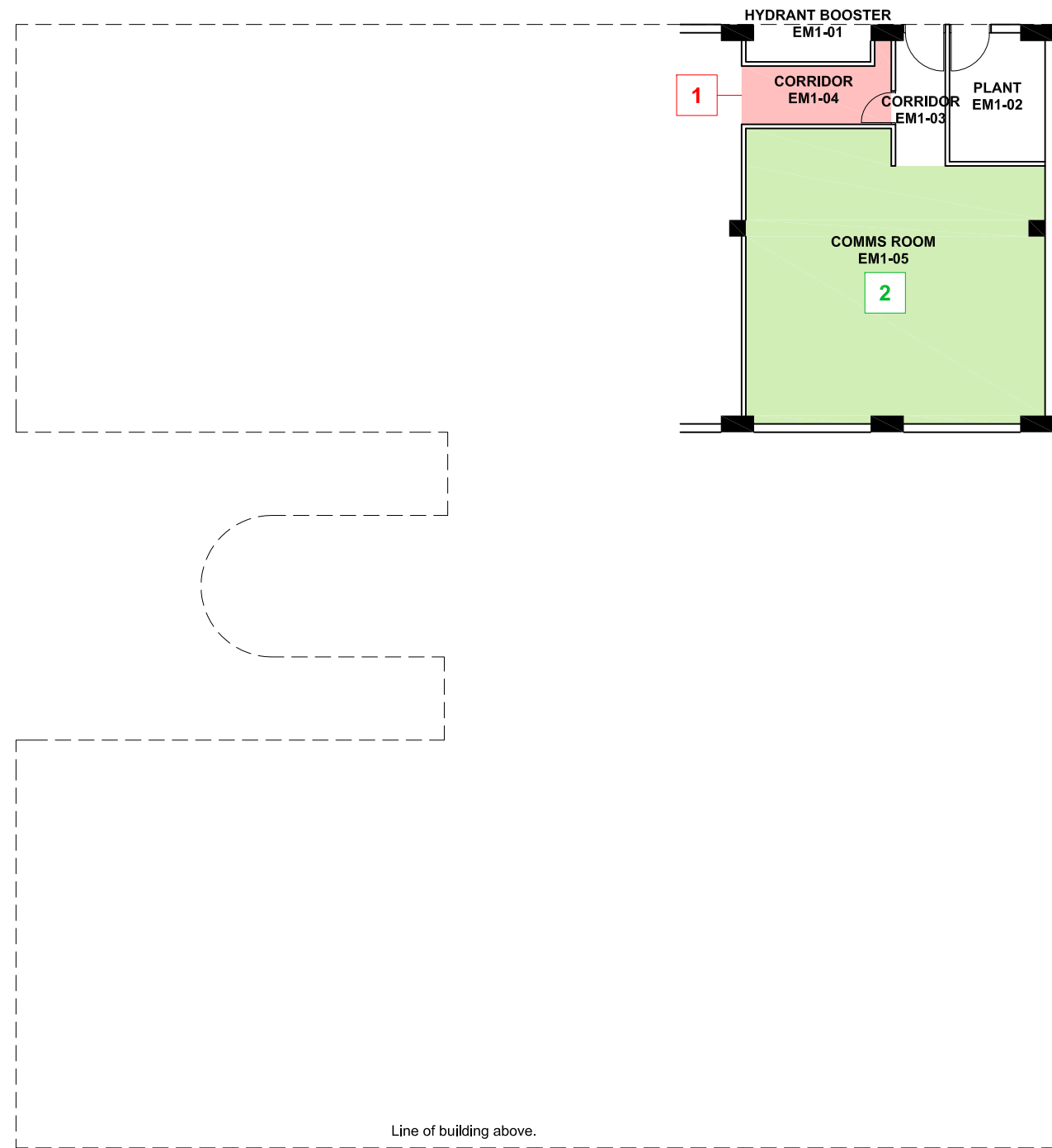
All drawings remain the property of the University of South Australia and must be returned upon request. These drawings are subject to change without notice. Any errors and/or omissions should be reported to the Facilities Management Unit.

LEGEND

RED Deemed Confined Space

GREEN Deemed Non-Confined Space

- 1 ROOM
- 1 ABOVE OR BELOW CURRENT LEVEL
- 1 WITHIN ROOM
- ACCESS TO ABOVE
- ACCESS TO BELOW
- 1 ▶ ACCESS DIRECTION (relative to plan)



UNIVERSITY OF
SOUTH AUSTRALIA

**FACILITIES
MANAGEMENT
UNIT**

Level 2,
101 Currie Street,
Adelaide, SA 5000
Phone 8302 2762
Fax 8302 2708

CONFINED SPACE

CITY WEST CAMPUS

Building

**ELTON MAYO
BUILDING EM
LEVEL 01**

Scale:
Not to scale

Drawn:
SMG

Last Update:
09/01/2013

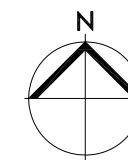
Plot Date:
06/09/2012 08:49

Drawing No.:

H702CS01

Revision:

A



All drawings remain the property of the University of South Australia and must be returned upon request. These drawings are subject to change without notice. Any errors and/or omissions should be reported to the Facilities Management Unit.

LEGEND

RED Deemed Confined Space

GREEN Deemed Non-Confined Space

- 1 ROOM
- 1 ABOVE OR BELOW CURRENT LEVEL
- 1 WITHIN ROOM
- ▲ 1 ACCESS TO ABOVE
- ▼ 1 ACCESS TO BELOW
- ▶ 1 ACCESS DIRECTION (relative to plan)



UNIVERSITY OF
SOUTH AUSTRALIA

FACILITIES
MANAGEMENT
UNIT

Level 2,
101 Currie Street,
Adelaide, SA 5000
Phone 8302 2762
Fax 8302 2708

CONFINED SPACE

CITY WEST CAMPUS

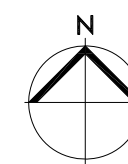
Building
ELTON MAYO
BUILDING EM
LEVEL 02

Scale:
Not to scale
Last Update:
09/01/2013

Drawn:
SMG
Plot Date:
06/09/2012 08:49

Drawing No.:
H702CS02

Revision:
A



All drawings remain the property of the University of South Australia and must be returned upon request. These drawings are subject to change without notice. Any errors and/or omissions should be reported to the Facilities Management Unit.

LEGEND

RED Deemed Confined Space

GREEN Deemed Non-Confined Space

- 1 ROOM
- 1 ABOVE OR BELOW CURRENT LEVEL
- 1 WITHIN ROOM
- ▲ 1 ACCESS TO ABOVE
- ▼ 1 ACCESS TO BELOW
- ▶ 1 ACCESS DIRECTION (relative to plan)



UNIVERSITY OF
SOUTH AUSTRALIA

**FACILITIES
MANAGEMENT
UNIT**

Level 2,
101 Currie Street,
Adelaide, SA 5000
Phone 8302 2762
Fax 8302 2708

CONFINED SPACE

CITY WEST CAMPUS

Building
**ELTON MAYO
BUILDING EM
LEVEL 03**

Scale:
Not to scale

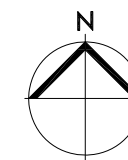
Drawn:
SMG

Last Update:
09/01/2013

Plot Date:
06/09/2012 08:49

Drawing No.:
H702CS03

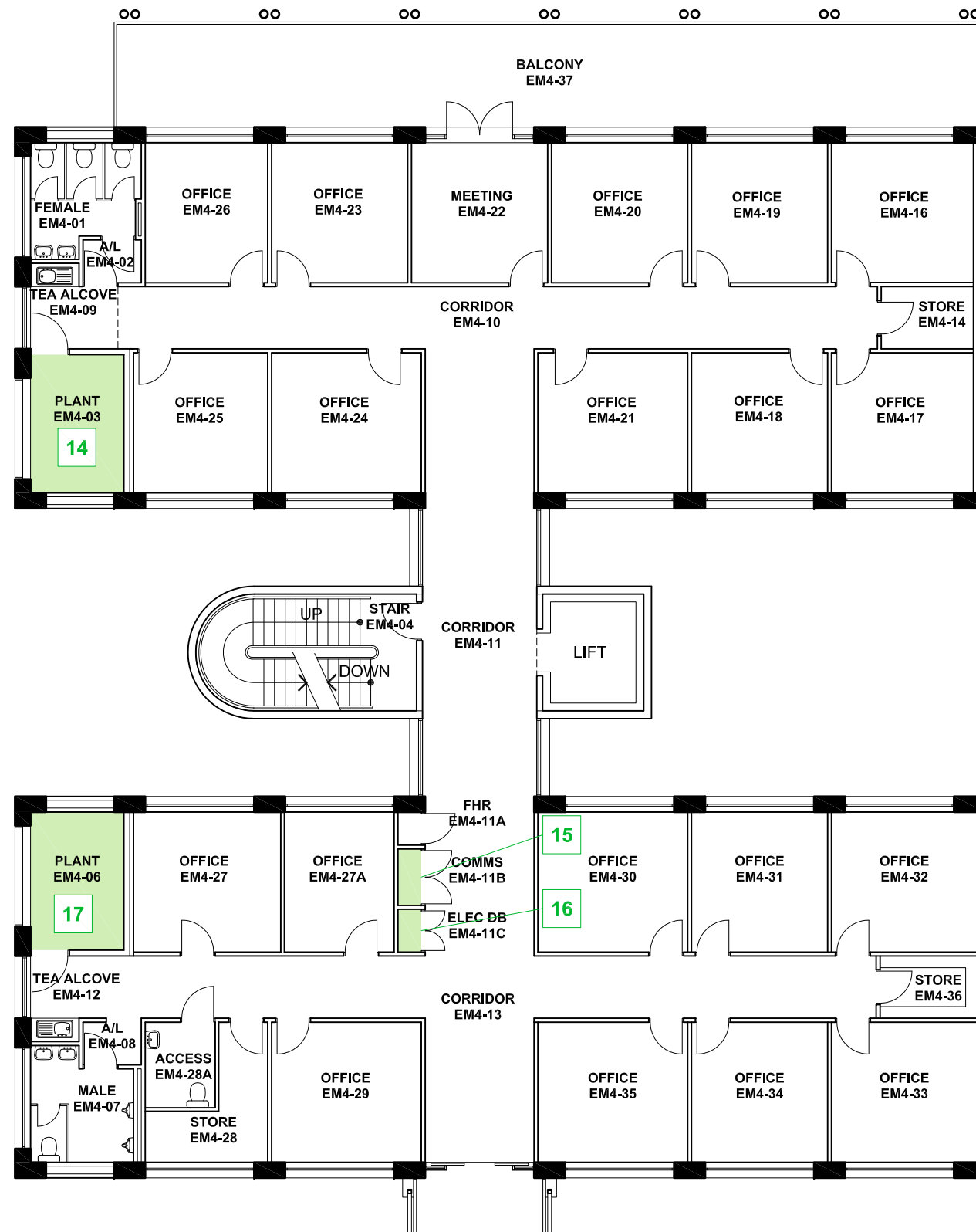
Revision:
A



All drawings remain the property of the University of South Australia and must be returned upon request. These drawings are subject to change without notice. Any errors and/or omissions should be reported to the Facilities Management Unit.

LEGEND

- **RED** Deemed Confined Space
- **GREEN** Deemed Non-Confined Space
- 1 ROOM
- 1 ABOVE OR BELOW CURRENT LEVEL
- 1 WITHIN ROOM
- ▲ 1 ACCESS TO ABOVE
- ▼ 1 ACCESS TO BELOW
- ▶ 1 ACCESS DIRECTION (relative to plan)



UNIVERSITY OF
SOUTH AUSTRALIA

**FACILITIES
MANAGEMENT
UNIT**

Level 2,
101 Currie Street,
Adelaide, SA 5000
Phone 8302 2762
Fax 8302 2708

CONFINED SPACE

CITY WEST CAMPUS

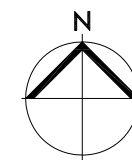
Building
**ELTON MAYO
BUILDING EM
LEVEL 04**

Scale:
Not to scale
Last Update:
09/01/2013

Drawn:
SMG
Plot Date:
06/09/2012 08:49

Drawing No.:
H702CS04

Revision:
A



All drawings remain the property of the University of South Australia and must be returned upon request. These drawings are subject to change without notice. Any errors and/or omissions should be reported to the Facilities Management Unit.

LEGEND

RED Deemed Confined Space

GREEN Deemed Non-Confined Space

- 1 ROOM
- 1 ABOVE OR BELOW CURRENT LEVEL
- 1 WITHIN ROOM
- ▲ 1 ACCESS TO ABOVE
- ▼ 1 ACCESS TO BELOW
- ▶ 1 ACCESS DIRECTION (relative to plan)



UNIVERSITY OF
SOUTH AUSTRALIA

FACILITIES
MANAGEMENT
UNIT

Level 2,
101 Currie Street,
Adelaide, SA 5000
Phone 8302 2762
Fax 8302 2708

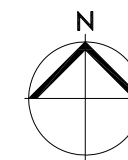
CONFINED SPACE

CITY WEST CAMPUS

Building
ELTON MAYO
BUILDING EM
LEVEL 05

Scale:
Not to scale
Last Update:
09/01/2013

Drawn:
SMG
Plot Date:
06/09/2012 08:49



Drawing No.:
H702CS05

Revision:
A

All drawings remain the property of the University of South Australia and must be returned upon request. These drawings are subject to change without notice. Any errors and/or omissions should be reported to the Facilities Management Unit.

LEGEND

RED Deemed Confined Space

GREEN Deemed Non-Confined Space

1 ROOM

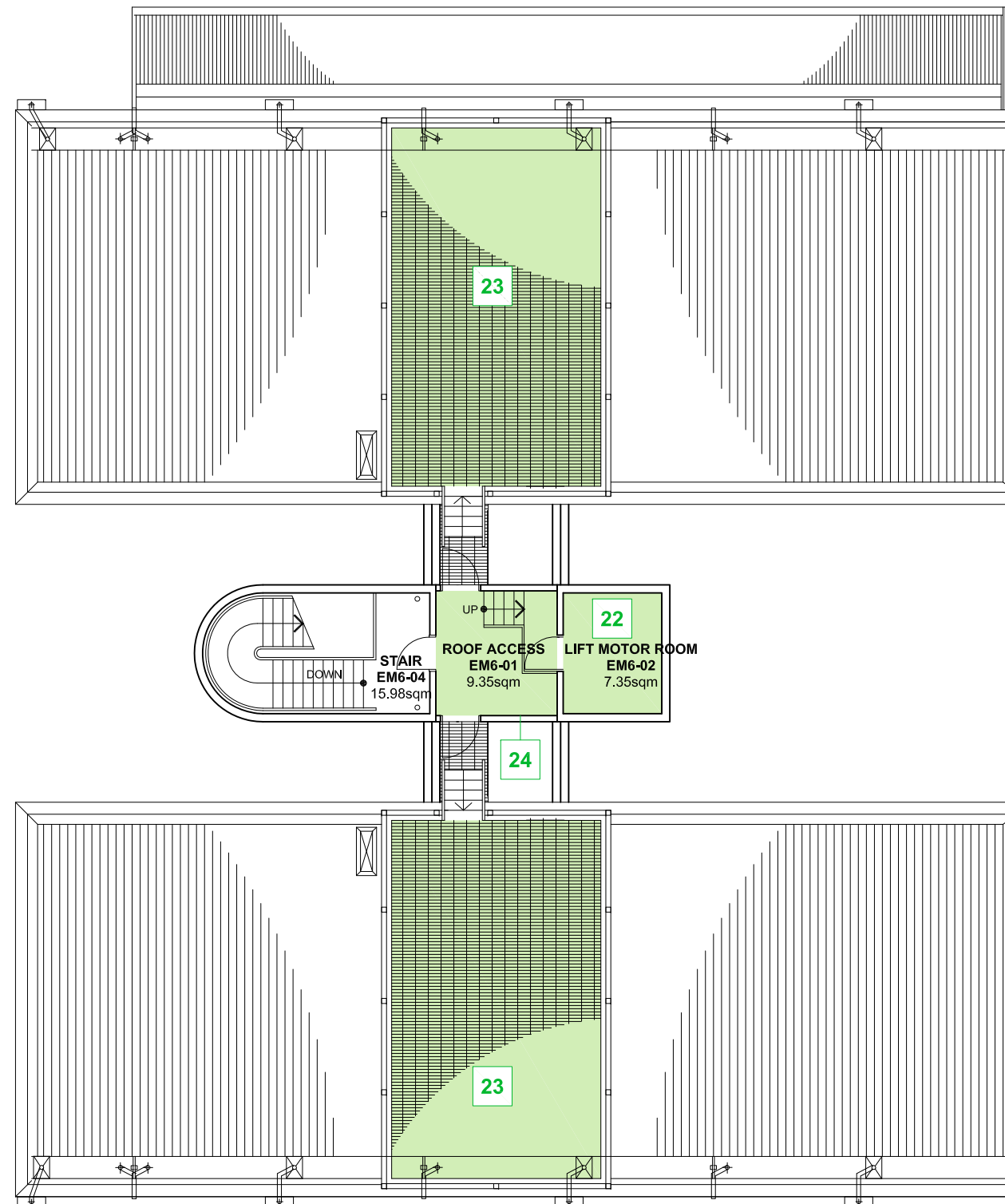
1 ABOVE OR BELOW CURRENT LEVEL

1 WITHIN ROOM

1 ACCESS TO ABOVE

1 ACCESS TO BELOW

1 ACCESS DIRECTION (relative to plan)



UNIVERSITY OF
SOUTH AUSTRALIA

FACILITIES
MANAGEMENT
UNIT

Level 2,
101 Currie Street,
Adelaide, SA 5000
Phone 8302 2762
Fax 8302 2708

CONFINED SPACE

CITY WEST CAMPUS

Building
ELTON MAYO
BUILDING EM
LEVEL 06 - ROOF

Scale:
Not to scale

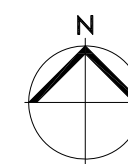
Drawn:

Last Update:
03/02/2014

Plot Date:
03/02/2014 16:41

Drawing No.:
H702CS06

Revision:
A



Appendix
Register of other spaces assessed

City West

Elton Mayo Building (EM)

**This Register does not remove the requirement for
contractors to complete their own work-based risk assessment.**

Space ID	Space description	Location	Confined Space according to Work Health and Safety Regulations 2012 (SA)?	Confined Space according to AS 2865-2009?	UniSA deemed Confined Space?	Comments	Link to details	Link to Plan
CW-EM-02	Comms	EM1-05	No	No	Non-Confined Space	This is a restricted space	CW-EM-02	Level 1
CW-EM-03	Vacant Space	EM2-10b	No	No	Non-Confined Space		CW-EM-03	Level 2
CW-EM-04	FIP & EWIS	EM2-10a	No	No	Non-Confined Space	This is a restricted space	CW-EM-04	Level 2
CW-EM-05	Plant Room	EM2-03	No	No	Non-Confined Space	This is a restricted space	CW-EM-05	Level 2
CW-EM-06	Electrical Distribution Board	EM2-11a	No	No	Non-Confined Space	This is a restricted space	CW-EM-06	Level 2
CW-EM-07	Comms	EM2-11b	No	No	Non-Confined Space	This is a restricted space	CW-EM-07	Level 2
CW-EM-08	Electrical Distribution Board	EM2-11c	No	No	Non-Confined Space	This is a restricted space	CW-EM-08	Level 2
CW-EM-09	Plant Room	EM2-06	No	No	Non-Confined Space	This is a restricted space	CW-EM-09	Level 2
CW-EM-10	Plant Room	EM3-03	No	No	Non-Confined Space	This is a restricted space	CW-EM-10	Level 3
CW-EM-11	Comms	EM3-11b	No	No	Non-Confined Space	This is a restricted space	CW-EM-11	Level 3
CW-EM-12	Electrical Distribution Board	EM3-11c	No	No	Non-Confined Space	This is a restricted space	CW-EM-12	Level 3
CW-EM-13	Plant Room	EM3-06	No	No	Non-Confined Space	This is a restricted space	CW-EM-13	Level 3
CW-EM-14	Plant Room	EM4-03	No	No	Non-Confined Space	This is a restricted space	CW-EM-14	Level 4
CW-EM-15	Comms	EM4-11b	No	No	Non-Confined Space	This is a restricted space	CW-EM-15	Level 4
CW-EM-16	Electrical Distribution Board	EM4-11c	No	No	Non-Confined Space	This is a restricted space	CW-EM-16	Level 4
CW-EM-17	Plant Room	EM4-06	No	No	Non-Confined Space	This is a restricted space	CW-EM-17	Level 4
CW-EM-18	Plant Room	EM5-03	No	No	Non-Confined Space	This is a restricted space	CW-EM-18	Level 5
CW-EM-19	Comms	EM5-11b	No	No	Non-Confined Space	This is a restricted space	CW-EM-19	Level 5
CW-EM-20	Electrical Distribution Board	EM5-11c	No	No	Non-Confined Space	This is a restricted space	CW-EM-20	Level 5
CW-EM-21	Plant Room	EM5-06	No	No	Non-Confined Space	This is a restricted space	CW-EM-21	Level 5
CW-EM-22	Lift Motor Room	EM6-02	No	No	Non-Confined Space	This is a restricted space	CW-EM-22	Level 6
CW-EM-23	Roof Access	via EM6-01	No	No	Non-Confined Space	This is a restricted space	CW-EM-23	Level 6
CW-EM-24	Roof Access	EM6-01	No	No	Non-Confined Space	This is a restricted space	CW-EM-24	Level 6

University of South Australia Confined Space Register 2012

Assessed by: AECOM Australia Pty Ltd

Date Assessed: 08/10/2012

Assessors: Daniel Alexander

Campus:	City West
Building:	EM
Space ID:	CW-EM-02
Description:	Comms
Location:	EM1-05

UniSA deemed:	Non-Confined Space
----------------------	---------------------------

UniSA deems a space Confined Space if either assessment criteria (shown below) results in Yes.

Number of Entrances:	1
Entry type:	Door / Gate
Access type:	Easy access

Comments:	This is a restricted space
Additional Hazards:	

[View on plan](#)

[Return to Register](#)

Category	Criteria: Work Health and Safety Regulations 2012 (SA)	Result
A	Is the space enclosed or partially enclosed?	Yes
B	Is not designed or intended primarily to be occupied by a person?	No
C	Is, or is designed or intended to be, at normal atmospheric pressure while any person is in the space?	Yes
D	Is or is likely to be a risk to health and safety from:	
i)	an atmosphere that does not have a safe oxygen level?	No
ii)	contaminants, including airborne gases, vapours and dusts, that may cause injury from fire or explosion?	No
iii)	harmful concentrations of any airborne contaminants?	No
iv)	engulfment?	No
Confined Space	If the answer to A and B and C and at least one of D i), ii), iii) or iv) is Yes, then the space is a Confined Space.	No

Category	Criteria: AS2865-2009	Result
A	Is the space enclosed or partially enclosed?	Yes
B	Is not intended or designed primarily for human occupancy?	Yes
C	Has an oxygen concentration outside the safe oxygen range?	No
D	Has a concentration of airborne contaminant that may cause impairment, loss of consciousness or asphyxiation?	No
E	Has a concentration of flammable airborne contaminant that may cause injury from fire or explosion?	No
F	Has a risk of engulfment in a stored free flowing solid or a rising level of liquid that may cause suffocation or drowning?	No
Confined Space	If the answer to A and B and at least one of C, D, E or F is Yes, then the space is a Confined Space.	No



Date	Amendment details	Approved by



University of South Australia Confined Space Register 2012

Assessed by: AECOM Australia Pty Ltd

Date Assessed: 08/10/2012

Assessors: Daniel Alexander

Campus:	City West
Building:	EM
Space ID:	CW-EM-03
Description:	Vacant Space
Location:	EM2-10b

UniSA deemed:	Non-Confined Space
----------------------	---------------------------

UniSA deems a space Confined Space if either assessment criteria (shown below) results in Yes.

Number of Entrances:	1
Entry type:	Door / Gate
Access type:	Easy access

Comments:	
Additional Hazards:	

[View on plan](#)

[Return to Register](#)

Category	Criteria: Work Health and Safety Regulations 2012 (SA)	Result
A	Is the space enclosed or partially enclosed?	Yes
B	Is not designed or intended primarily to be occupied by a person?	No
C	Is, or is designed or intended to be, at normal atmospheric pressure while any person is in the space?	Yes
D	Is or is likely to be a risk to health and safety from:	
i)	an atmosphere that does not have a safe oxygen level?	No
ii)	contaminants, including airborne gases, vapours and dusts, that may cause injury from fire or explosion?	No
iii)	harmful concentrations of any airborne contaminants?	No
iv)	engulfment?	No
Confined Space	If the answer to A and B and C and at least one of D i), ii), iii) or iv) is Yes, then the space is a Confined Space.	No

Category	Criteria: AS2865-2009	Result
A	Is the space enclosed or partially enclosed?	Yes
B	Is not intended or designed primarily for human occupancy?	Yes
C	Has an oxygen concentration outside the safe oxygen range?	No
D	Has a concentration of airborne contaminant that may cause impairment, loss of consciousness or asphyxiation?	No
E	Has a concentration of flammable airborne contaminant that may cause injury from fire or explosion?	No
F	Has a risk of engulfment in a stored free flowing solid or a rising level of liquid that may cause suffocation or drowning?	No
Confined Space	If the answer to A and B and at least one of C, D, E or F is Yes, then the space is a Confined Space.	No



Date	Amendment details	Approved by



University of South Australia Confined Space Register 2012

Assessed by: AECOM Australia Pty Ltd

Date Assessed: 08/10/2012

Assessors: Daniel Alexander

Campus:	City West
Building:	EM
Space ID:	CW-EM-04
Description:	FIP & EWIS
Location:	EM2-10a

UniSA deemed:	Non-Confined Space
----------------------	---------------------------

UniSA deems a space Confined Space if either assessment criteria (shown below) results in Yes.

Number of Entrances:	1
Entry type:	Door / Gate
Access type:	Easy access

Comments:	This is a restricted space
Additional Hazards:	

[View on plan](#)

[Return to Register](#)

Category	Criteria: Work Health and Safety Regulations 2012 (SA)	Result
A	Is the space enclosed or partially enclosed?	Yes
B	Is not designed or intended primarily to be occupied by a person?	No
C	Is, or is designed or intended to be, at normal atmospheric pressure while any person is in the space?	Yes
D	Is or is likely to be a risk to health and safety from:	
i)	an atmosphere that does not have a safe oxygen level?	No
ii)	contaminants, including airborne gases, vapours and dusts, that may cause injury from fire or explosion?	No
iii)	harmful concentrations of any airborne contaminants?	No
iv)	engulfment?	No
Confined Space	If the answer to A and B and C and at least one of D i), ii), iii) or iv) is Yes, then the space is a Confined Space.	No

Category	Criteria: AS2865-2009	Result
A	Is the space enclosed or partially enclosed?	Yes
B	Is not intended or designed primarily for human occupancy?	Yes
C	Has an oxygen concentration outside the safe oxygen range?	No
D	Has a concentration of airborne contaminant that may cause impairment, loss of consciousness or asphyxiation?	No
E	Has a concentration of flammable airborne contaminant that may cause injury from fire or explosion?	No
F	Has a risk of engulfment in a stored free flowing solid or a rising level of liquid that may cause suffocation or drowning?	No
Confined Space	If the answer to A and B and at least one of C, D, E or F is Yes, then the space is a Confined Space.	No



Date	Amendment details	Approved by



University of South Australia Confined Space Register 2012

Assessed by: AECOM Australia Pty Ltd

Date Assessed: 08/10/2012

Assessors: Daniel Alexander

Campus:	City West
Building:	EM
Space ID:	CW-EM-05
Description:	Plant Room
Location:	EM2-03

UniSA deemed:	Non-Confined Space
----------------------	---------------------------

UniSA deems a space Confined Space if either assessment criteria (shown below) results in Yes.

Number of Entrances:	1
Entry type:	Door / Gate
Access type:	Easy access

Comments:	This is a restricted space
Additional Hazards:	Slips trips and falls, Mechanical

[View on plan](#)

[Return to Register](#)

Category	Criteria: Work Health and Safety Regulations 2012 (SA)	Result
A	Is the space enclosed or partially enclosed?	Yes
B	Is not designed or intended primarily to be occupied by a person?	No
C	Is, or is designed or intended to be, at normal atmospheric pressure while any person is in the space?	Yes
D	Is or is likely to be a risk to health and safety from:	
i)	an atmosphere that does not have a safe oxygen level?	No
ii)	contaminants, including airborne gases, vapours and dusts, that may cause injury from fire or explosion?	No
iii)	harmful concentrations of any airborne contaminants?	No
iv)	engulfment?	No
Confined Space	If the answer to A and B and C and at least one of D i), ii), iii) or iv) is Yes, then the space is a Confined Space.	No

Category	Criteria: AS2865-2009	Result
A	Is the space enclosed or partially enclosed?	Yes
B	Is not intended or designed primarily for human occupancy?	Yes
C	Has an oxygen concentration outside the safe oxygen range?	No
D	Has a concentration of airborne contaminant that may cause impairment, loss of consciousness or asphyxiation?	No
E	Has a concentration of flammable airborne contaminant that may cause injury from fire or explosion?	No
F	Has a risk of engulfment in a stored free flowing solid or a rising level of liquid that may cause suffocation or drowning?	No
Confined Space	If the answer to A and B and at least one of C, D, E or F is Yes, then the space is a Confined Space.	No



Date	Amendment details	Approved by



University of South Australia Confined Space Register 2012

Assessed by: AECOM Australia Pty Ltd

Date Assessed: 08/10/2012

Assessors: Daniel Alexander

Campus:	City West
Building:	EM
Space ID:	CW-EM-06
Description:	Electrical Distribution Board
Location:	EM2-11a

UniSA deemed:	Non-Confined Space
----------------------	---------------------------

UniSA deems a space Confined Space if either assessment criteria (shown below) results in Yes.

Number of Entrances:	1
Entry type:	Door / Gate
Access type:	Easy access

Comments:	This is a restricted space
Additional Hazards:	Electrical

[View on plan](#)

[Return to Register](#)

Category	Criteria: Work Health and Safety Regulations 2012 (SA)	Result
A	Is the space enclosed or partially enclosed?	Yes
B	Is not designed or intended primarily to be occupied by a person?	No
C	Is, or is designed or intended to be, at normal atmospheric pressure while any person is in the space?	Yes
D	Is or is likely to be a risk to health and safety from:	
i)	an atmosphere that does not have a safe oxygen level?	No
ii)	contaminants, including airborne gases, vapours and dusts, that may cause injury from fire or explosion?	No
iii)	harmful concentrations of any airborne contaminants?	No
iv)	engulfment?	No
Confined Space	If the answer to A and B and C and at least one of D i), ii), iii) or iv) is Yes, then the space is a Confined Space.	No

Category	Criteria: AS2865-2009	Result
A	Is the space enclosed or partially enclosed?	Yes
B	Is not intended or designed primarily for human occupancy?	Yes
C	Has an oxygen concentration outside the safe oxygen range?	No
D	Has a concentration of airborne contaminant that may cause impairment, loss of consciousness or asphyxiation?	No
E	Has a concentration of flammable airborne contaminant that may cause injury from fire or explosion?	No
F	Has a risk of engulfment in a stored free flowing solid or a rising level of liquid that may cause suffocation or drowning?	No
Confined Space	If the answer to A and B and at least one of C, D, E or F is Yes, then the space is a Confined Space.	No



Date	Amendment details	Approved by



University of South Australia Confined Space Register 2012

Assessed by: AECOM Australia Pty Ltd

Date Assessed: 08/10/2012

Assessors: Daniel Alexander

Campus:	City West
Building:	EM
Space ID:	CW-EM-07
Description:	Comms
Location:	EM2-11b

UniSA deemed:	Non-Confined Space
----------------------	---------------------------

UniSA deems a space Confined Space if either assessment criteria (shown below) results in Yes.

Number of Entrances:	1
Entry type:	Door / Gate
Access type:	Easy access

Comments:	This is a restricted space
Additional Hazards:	

[View on plan](#)

[Return to Register](#)

Category	Criteria: Work Health and Safety Regulations 2012 (SA)	Result
A	Is the space enclosed or partially enclosed?	Yes
B	Is not designed or intended primarily to be occupied by a person?	No
C	Is, or is designed or intended to be, at normal atmospheric pressure while any person is in the space?	Yes
D	Is or is likely to be a risk to health and safety from:	
i)	an atmosphere that does not have a safe oxygen level?	No
ii)	contaminants, including airborne gases, vapours and dusts, that may cause injury from fire or explosion?	No
iii)	harmful concentrations of any airborne contaminants?	No
iv)	engulfment?	No
Confined Space	If the answer to A and B and C and at least one of D i), ii), iii) or iv) is Yes, then the space is a Confined Space.	No

Category	Criteria: AS2865-2009	Result
A	Is the space enclosed or partially enclosed?	Yes
B	Is not intended or designed primarily for human occupancy?	Yes
C	Has an oxygen concentration outside the safe oxygen range?	No
D	Has a concentration of airborne contaminant that may cause impairment, loss of consciousness or asphyxiation?	No
E	Has a concentration of flammable airborne contaminant that may cause injury from fire or explosion?	No
F	Has a risk of engulfment in a stored free flowing solid or a rising level of liquid that may cause suffocation or drowning?	No
Confined Space	If the answer to A and B and at least one of C, D, E or F is Yes, then the space is a Confined Space.	No



Date	Amendment details	Approved by



University of South Australia Confined Space Register 2012

Assessed by: AECOM Australia Pty Ltd

Date Assessed: 08/10/2012

Assessors: Daniel Alexander

Campus:	City West
Building:	EM
Space ID:	CW-EM-08
Description:	Electrical Distribution Board
Location:	EM2-11c

UniSA deemed:	Non-Confined Space
----------------------	---------------------------

UniSA deems a space Confined Space if either assessment criteria (shown below) results in Yes.

Number of Entrances:	1
Entry type:	Door / Gate
Access type:	Easy access

Comments:	This is a restricted space
Additional Hazards:	Electrical

[View on plan](#)

[Return to Register](#)

Category	Criteria: Work Health and Safety Regulations 2012 (SA)	Result
A	Is the space enclosed or partially enclosed?	Yes
B	Is not designed or intended primarily to be occupied by a person?	No
C	Is, or is designed or intended to be, at normal atmospheric pressure while any person is in the space?	Yes
D	Is or is likely to be a risk to health and safety from:	
i)	an atmosphere that does not have a safe oxygen level?	No
ii)	contaminants, including airborne gases, vapours and dusts, that may cause injury from fire or explosion?	No
iii)	harmful concentrations of any airborne contaminants?	No
iv)	engulfment?	No
Confined Space	If the answer to A and B and C and at least one of D i), ii), iii) or iv) is Yes, then the space is a Confined Space.	No

Category	Criteria: AS2865-2009	Result
A	Is the space enclosed or partially enclosed?	Yes
B	Is not intended or designed primarily for human occupancy?	Yes
C	Has an oxygen concentration outside the safe oxygen range?	No
D	Has a concentration of airborne contaminant that may cause impairment, loss of consciousness or asphyxiation?	No
E	Has a concentration of flammable airborne contaminant that may cause injury from fire or explosion?	No
F	Has a risk of engulfment in a stored free flowing solid or a rising level of liquid that may cause suffocation or drowning?	No
Confined Space	If the answer to A and B and at least one of C, D, E or F is Yes, then the space is a Confined Space.	No



Date	Amendment details	Approved by



University of South Australia Confined Space Register 2012

Assessed by: AECOM Australia Pty Ltd

Date Assessed: 08/10/2012

Assessors: Daniel Alexander

Campus:	City West
Building:	EM
Space ID:	CW-EM-09
Description:	Plant Room
Location:	EM2-06

UniSA deemed: Non-Confined Space

UniSA deems a space Confined Space if either assessment criteria (shown below) results in Yes.

Number of Entrances:	1
Entry type:	Door / Gate
Access type:	Easy access

Comments:	This is a restricted space
Additional Hazards:	Slips trips and falls, Mechanical, Electrical

[View on plan](#)

[Return to Register](#)

Category	Criteria: Work Health and Safety Regulations 2012 (SA)	Result
A	Is the space enclosed or partially enclosed?	Yes
B	Is not designed or intended primarily to be occupied by a person?	No
C	Is, or is designed or intended to be, at normal atmospheric pressure while any person is in the space?	Yes
D	Is or is likely to be a risk to health and safety from:	
i)	an atmosphere that does not have a safe oxygen level?	No
ii)	contaminants, including airborne gases, vapours and dusts, that may cause injury from fire or explosion?	No
iii)	harmful concentrations of any airborne contaminants?	No
iv)	engulfment?	No
Confined Space	If the answer to A and B and C and at least one of D i), ii), iii) or iv) is Yes, then the space is a Confined Space.	No

Category	Criteria: AS2865-2009	Result
A	Is the space enclosed or partially enclosed?	Yes
B	Is not intended or designed primarily for human occupancy?	Yes
C	Has an oxygen concentration outside the safe oxygen range?	No
D	Has a concentration of airborne contaminant that may cause impairment, loss of consciousness or asphyxiation?	No
E	Has a concentration of flammable airborne contaminant that may cause injury from fire or explosion?	No
F	Has a risk of engulfment in a stored free flowing solid or a rising level of liquid that may cause suffocation or drowning?	No
Confined Space	If the answer to A and B and at least one of C, D, E or F is Yes, then the space is a Confined Space.	No



Date	Amendment details	Approved by



University of South Australia Confined Space Register 2012

Assessed by: AECOM Australia Pty Ltd

Date Assessed: 08/10/2012

Assessors: Daniel Alexander

Campus:	City West
Building:	EM
Space ID:	CW-EM-10
Description:	Plant Room
Location:	EM3-03

UniSA deemed: Non-Confined Space

UniSA deems a space Confined Space if either assessment criteria (shown below) results in Yes.

Number of Entrances:	1
Entry type:	Door / Gate
Access type:	Easy access

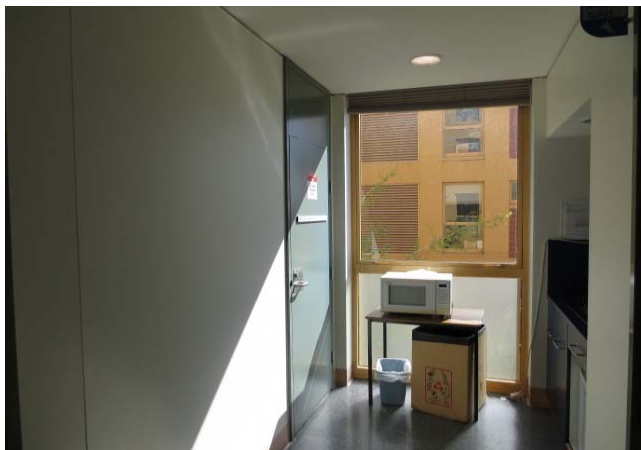
Comments:	This is a restricted space
Additional Hazards:	Slips trips and falls, Mechanical, Electrical

[View on plan](#)

[Return to Register](#)

Category	Criteria: Work Health and Safety Regulations 2012 (SA)	Result
A	Is the space enclosed or partially enclosed?	Yes
B	Is not designed or intended primarily to be occupied by a person?	No
C	Is, or is designed or intended to be, at normal atmospheric pressure while any person is in the space?	Yes
D	Is or is likely to be a risk to health and safety from:	
i)	an atmosphere that does not have a safe oxygen level?	No
ii)	contaminants, including airborne gases, vapours and dusts, that may cause injury from fire or explosion?	No
iii)	harmful concentrations of any airborne contaminants?	No
iv)	engulfment?	No
Confined Space	If the answer to A and B and C and at least one of D i), ii), iii) or iv) is Yes, then the space is a Confined Space.	No

Category	Criteria: AS2865-2009	Result
A	Is the space enclosed or partially enclosed?	Yes
B	Is not intended or designed primarily for human occupancy?	Yes
C	Has an oxygen concentration outside the safe oxygen range?	No
D	Has a concentration of airborne contaminant that may cause impairment, loss of consciousness or asphyxiation?	No
E	Has a concentration of flammable airborne contaminant that may cause injury from fire or explosion?	No
F	Has a risk of engulfment in a stored free flowing solid or a rising level of liquid that may cause suffocation or drowning?	No
Confined Space	If the answer to A and B and at least one of C, D, E or F is Yes, then the space is a Confined Space.	No



Date	Amendment details	Approved by



University of South Australia Confined Space Register 2012

Assessed by: AECOM Australia Pty Ltd

Date Assessed: 08/10/2012

Assessors: Daniel Alexander

Campus:	City West
Building:	EM
Space ID:	CW-EM-11
Description:	Comms
Location:	EM3-11b

UniSA deemed:	Non-Confined Space
----------------------	---------------------------

UniSA deems a space Confined Space if either assessment criteria (shown below) results in Yes.

Number of Entrances:	1
Entry type:	Door / Gate
Access type:	Easy access

Comments:	This is a restricted space
Additional Hazards:	

[View on plan](#)

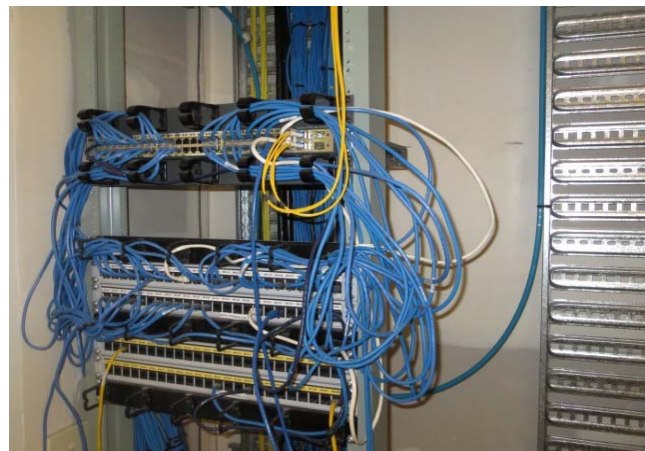
[Return to Register](#)

Category	Criteria: Work Health and Safety Regulations 2012 (SA)	Result
A	Is the space enclosed or partially enclosed?	Yes
B	Is not designed or intended primarily to be occupied by a person?	No
C	Is, or is designed or intended to be, at normal atmospheric pressure while any person is in the space?	Yes
D	Is or is likely to be a risk to health and safety from:	
i)	an atmosphere that does not have a safe oxygen level?	No
ii)	contaminants, including airborne gases, vapours and dusts, that may cause injury from fire or explosion?	No
iii)	harmful concentrations of any airborne contaminants?	No
iv)	engulfment?	No
Confined Space	If the answer to A and B and C and at least one of D i), ii), iii) or iv) is Yes, then the space is a Confined Space.	No

Category	Criteria: AS2865-2009	Result
A	Is the space enclosed or partially enclosed?	Yes
B	Is not intended or designed primarily for human occupancy?	Yes
C	Has an oxygen concentration outside the safe oxygen range?	No
D	Has a concentration of airborne contaminant that may cause impairment, loss of consciousness or asphyxiation?	No
E	Has a concentration of flammable airborne contaminant that may cause injury from fire or explosion?	No
F	Has a risk of engulfment in a stored free flowing solid or a rising level of liquid that may cause suffocation or drowning?	No
Confined Space	If the answer to A and B and at least one of C, D, E or F is Yes, then the space is a Confined Space.	No



Date	Amendment details	Approved by



University of South Australia Confined Space Register 2012

Assessed by: AECOM Australia Pty Ltd

Date Assessed: 08/10/2012

Assessors: Daniel Alexander

Campus:	City West
Building:	EM
Space ID:	CW-EM-12
Description:	Electrical Distribution Board
Location:	EM3-11c

UniSA deemed: Non-Confined Space

UniSA deems a space Confined Space if either assessment criteria (shown below) results in Yes.

Number of Entrances:	1
Entry type:	Door / Gate
Access type:	Easy access

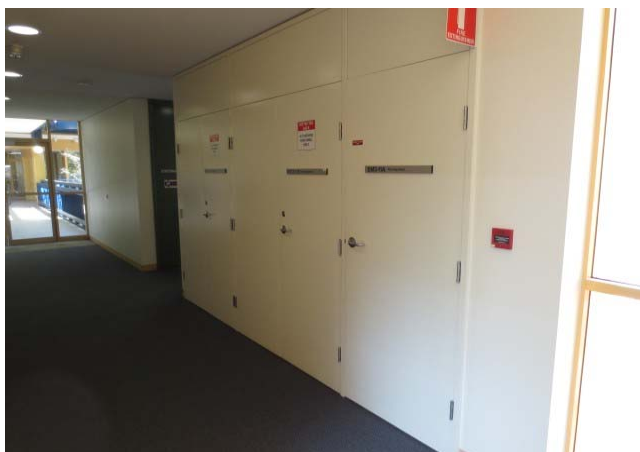
Comments:	This is a restricted space
Additional Hazards:	Electrical

[View on plan](#)

[Return to Register](#)

Category	Criteria: Work Health and Safety Regulations 2012 (SA)	Result
A	Is the space enclosed or partially enclosed?	Yes
B	Is not designed or intended primarily to be occupied by a person?	No
C	Is, or is designed or intended to be, at normal atmospheric pressure while any person is in the space?	Yes
D	Is or is likely to be a risk to health and safety from:	
i)	an atmosphere that does not have a safe oxygen level?	No
ii)	contaminants, including airborne gases, vapours and dusts, that may cause injury from fire or explosion?	No
iii)	harmful concentrations of any airborne contaminants?	No
iv)	engulfment?	No
Confined Space	If the answer to A and B and C and at least one of D i), ii), iii) or iv) is Yes, then the space is a Confined Space.	No

Category	Criteria: AS2865-2009	Result
A	Is the space enclosed or partially enclosed?	Yes
B	Is not intended or designed primarily for human occupancy?	Yes
C	Has an oxygen concentration outside the safe oxygen range?	No
D	Has a concentration of airborne contaminant that may cause impairment, loss of consciousness or asphyxiation?	No
E	Has a concentration of flammable airborne contaminant that may cause injury from fire or explosion?	No
F	Has a risk of engulfment in a stored free flowing solid or a rising level of liquid that may cause suffocation or drowning?	No
Confined Space	If the answer to A and B and at least one of C, D, E or F is Yes, then the space is a Confined Space.	No



Date	Amendment details	Approved by



University of South Australia Confined Space Register 2012

Assessed by: AECOM Australia Pty Ltd

Date Assessed: 08/10/2012

Assessors: Daniel Alexander

Campus:	City West
Building:	EM
Space ID:	CW-EM-13
Description:	Plant Room
Location:	EM3-06

UniSA deemed: Non-Confined Space

UniSA deems a space Confined Space if either assessment criteria (shown below) results in Yes.

Number of Entrances:	1
Entry type:	Door / Gate
Access type:	Easy access

Comments:	This is a restricted space
Additional Hazards:	Slips trips and falls, Mechanical

[View on plan](#)

[Return to Register](#)

Category	Criteria: Work Health and Safety Regulations 2012 (SA)	Result
A	Is the space enclosed or partially enclosed?	Yes
B	Is not designed or intended primarily to be occupied by a person?	No
C	Is, or is designed or intended to be, at normal atmospheric pressure while any person is in the space?	Yes
D	Is or is likely to be a risk to health and safety from:	
i)	an atmosphere that does not have a safe oxygen level?	No
ii)	contaminants, including airborne gases, vapours and dusts, that may cause injury from fire or explosion?	No
iii)	harmful concentrations of any airborne contaminants?	No
iv)	engulfment?	No
Confined Space	If the answer to A and B and C and at least one of D i), ii), iii) or iv) is Yes, then the space is a Confined Space.	No

Category	Criteria: AS2865-2009	Result
A	Is the space enclosed or partially enclosed?	Yes
B	Is not intended or designed primarily for human occupancy?	Yes
C	Has an oxygen concentration outside the safe oxygen range?	No
D	Has a concentration of airborne contaminant that may cause impairment, loss of consciousness or asphyxiation?	No
E	Has a concentration of flammable airborne contaminant that may cause injury from fire or explosion?	No
F	Has a risk of engulfment in a stored free flowing solid or a rising level of liquid that may cause suffocation or drowning?	No
Confined Space	If the answer to A and B and at least one of C, D, E or F is Yes, then the space is a Confined Space.	No



Date	Amendment details	Approved by



University of South Australia Confined Space Register 2012

Assessed by: AECOM Australia Pty Ltd

Date Assessed: 08/10/2012

Assessors: Daniel Alexander

Campus:	City West
Building:	EM
Space ID:	CW-EM-14
Description:	Plant Room
Location:	EM4-03

UniSA deemed:	Non-Confined Space
----------------------	---------------------------

UniSA deems a space Confined Space if either assessment criteria (shown below) results in Yes.

Number of Entrances:	1
Entry type:	Door / Gate
Access type:	Easy access

Comments:	This is a restricted space
Additional Hazards:	Slips trips and falls, Mechanical

[View on plan](#)

[Return to Register](#)

Category	Criteria: Work Health and Safety Regulations 2012 (SA)	Result
A	Is the space enclosed or partially enclosed?	Yes
B	Is not designed or intended primarily to be occupied by a person?	No
C	Is, or is designed or intended to be, at normal atmospheric pressure while any person is in the space?	Yes
D	Is or is likely to be a risk to health and safety from:	
i)	an atmosphere that does not have a safe oxygen level?	No
ii)	contaminants, including airborne gases, vapours and dusts, that may cause injury from fire or explosion?	No
iii)	harmful concentrations of any airborne contaminants?	No
iv)	engulfment?	No
Confined Space	If the answer to A and B and C and at least one of D i), ii), iii) or iv) is Yes, then the space is a Confined Space.	No

Category	Criteria: AS2865-2009	Result
A	Is the space enclosed or partially enclosed?	Yes
B	Is not intended or designed primarily for human occupancy?	Yes
C	Has an oxygen concentration outside the safe oxygen range?	No
D	Has a concentration of airborne contaminant that may cause impairment, loss of consciousness or asphyxiation?	No
E	Has a concentration of flammable airborne contaminant that may cause injury from fire or explosion?	No
F	Has a risk of engulfment in a stored free flowing solid or a rising level of liquid that may cause suffocation or drowning?	No
Confined Space	If the answer to A and B and at least one of C, D, E or F is Yes, then the space is a Confined Space.	No



Date	Amendment details	Approved by



University of South Australia Confined Space Register 2012

Assessed by: AECOM Australia Pty Ltd

Date Assessed: 08/10/2012

Assessors: Daniel Alexander

Campus:	City West
Building:	EM
Space ID:	CW-EM-15
Description:	Comms
Location:	EM4-11b

UniSA deemed:	Non-Confined Space
----------------------	---------------------------

UniSA deems a space Confined Space if either assessment criteria (shown below) results in Yes.

Number of Entrances:	1
Entry type:	Door / Gate
Access type:	Easy access

Comments:	This is a restricted space
Additional Hazards:	

[View on plan](#)

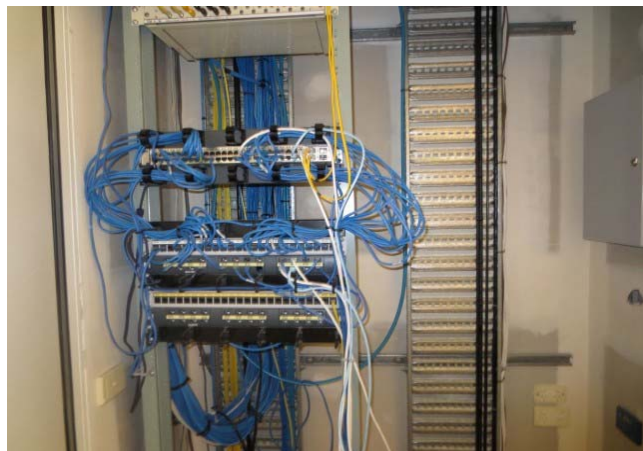
[Return to Register](#)

Category	Criteria: Work Health and Safety Regulations 2012 (SA)	Result
A	Is the space enclosed or partially enclosed?	Yes
B	Is not designed or intended primarily to be occupied by a person?	No
C	Is, or is designed or intended to be, at normal atmospheric pressure while any person is in the space?	Yes
D	Is or is likely to be a risk to health and safety from:	
i)	an atmosphere that does not have a safe oxygen level?	No
ii)	contaminants, including airborne gases, vapours and dusts, that may cause injury from fire or explosion?	No
iii)	harmful concentrations of any airborne contaminants?	No
iv)	engulfment?	No
Confined Space	If the answer to A and B and C and at least one of D i), ii), iii) or iv) is Yes, then the space is a Confined Space.	No

Category	Criteria: AS2865-2009	Result
A	Is the space enclosed or partially enclosed?	Yes
B	Is not intended or designed primarily for human occupancy?	Yes
C	Has an oxygen concentration outside the safe oxygen range?	No
D	Has a concentration of airborne contaminant that may cause impairment, loss of consciousness or asphyxiation?	No
E	Has a concentration of flammable airborne contaminant that may cause injury from fire or explosion?	No
F	Has a risk of engulfment in a stored free flowing solid or a rising level of liquid that may cause suffocation or drowning?	No
Confined Space	If the answer to A and B and at least one of C, D, E or F is Yes, then the space is a Confined Space.	No



Date	Amendment details	Approved by



University of South Australia Confined Space Register 2012

Assessed by: AECOM Australia Pty Ltd

Date Assessed: 08/10/2012

Assessors: Daniel Alexander

Campus:	City West
Building:	EM
Space ID:	CW-EM-16
Description:	Electrical Distribution Board
Location:	EM4-11c

UniSA deemed: Non-Confined Space

UniSA deems a space Confined Space if either assessment criteria (shown below) results in Yes.

Number of Entrances:	1
Entry type:	Door / Gate
Access type:	Easy access

Comments:	This is a restricted space
Additional Hazards:	Electrical

[View on plan](#)

[Return to Register](#)

Category	Criteria: Work Health and Safety Regulations 2012 (SA)	Result
A	Is the space enclosed or partially enclosed?	Yes
B	Is not designed or intended primarily to be occupied by a person?	No
C	Is, or is designed or intended to be, at normal atmospheric pressure while any person is in the space?	Yes
D	Is or is likely to be a risk to health and safety from:	
i)	an atmosphere that does not have a safe oxygen level?	No
ii)	contaminants, including airborne gases, vapours and dusts, that may cause injury from fire or explosion?	No
iii)	harmful concentrations of any airborne contaminants?	No
iv)	engulfment?	No
Confined Space	If the answer to A and B and C and at least one of D i), ii), iii) or iv) is Yes, then the space is a Confined Space.	No

Category	Criteria: AS2865-2009	Result
A	Is the space enclosed or partially enclosed?	Yes
B	Is not intended or designed primarily for human occupancy?	Yes
C	Has an oxygen concentration outside the safe oxygen range?	No
D	Has a concentration of airborne contaminant that may cause impairment, loss of consciousness or asphyxiation?	No
E	Has a concentration of flammable airborne contaminant that may cause injury from fire or explosion?	No
F	Has a risk of engulfment in a stored free flowing solid or a rising level of liquid that may cause suffocation or drowning?	No
Confined Space	If the answer to A and B and at least one of C, D, E or F is Yes, then the space is a Confined Space.	No



Date	Amendment details	Approved by



University of South Australia Confined Space Register 2012

Assessed by: AECOM Australia Pty Ltd

Date Assessed: 08/10/2012

Assessors: Daniel Alexander

Campus:	City West
Building:	EM
Space ID:	CW-EM-17
Description:	Plant Room
Location:	EM4-06

UniSA deemed:	Non-Confined Space
----------------------	---------------------------

UniSA deems a space Confined Space if either assessment criteria (shown below) results in Yes.

Number of Entrances:	1
Entry type:	Door / Gate
Access type:	Easy access

Comments:	This is a restricted space
Additional Hazards:	Slips trips and falls, Mechanical

[View on plan](#)

[Return to Register](#)

Category	Criteria: Work Health and Safety Regulations 2012 (SA)	Result
A	Is the space enclosed or partially enclosed?	Yes
B	Is not designed or intended primarily to be occupied by a person?	No
C	Is, or is designed or intended to be, at normal atmospheric pressure while any person is in the space?	Yes
D	Is or is likely to be a risk to health and safety from:	
i)	an atmosphere that does not have a safe oxygen level?	No
ii)	contaminants, including airborne gases, vapours and dusts, that may cause injury from fire or explosion?	No
iii)	harmful concentrations of any airborne contaminants?	No
iv)	engulfment?	No
Confined Space	If the answer to A and B and C and at least one of D i), ii), iii) or iv) is Yes, then the space is a Confined Space.	No

Category	Criteria: AS2865-2009	Result
A	Is the space enclosed or partially enclosed?	Yes
B	Is not intended or designed primarily for human occupancy?	Yes
C	Has an oxygen concentration outside the safe oxygen range?	No
D	Has a concentration of airborne contaminant that may cause impairment, loss of consciousness or asphyxiation?	No
E	Has a concentration of flammable airborne contaminant that may cause injury from fire or explosion?	No
F	Has a risk of engulfment in a stored free flowing solid or a rising level of liquid that may cause suffocation or drowning?	No
Confined Space	If the answer to A and B and at least one of C, D, E or F is Yes, then the space is a Confined Space.	No



Date	Amendment details	Approved by



University of South Australia Confined Space Register 2012

Assessed by: AECOM Australia Pty Ltd

Date Assessed: 08/10/2012

Assessors: Daniel Alexander

Campus:	City West
Building:	EM
Space ID:	CW-EM-18
Description:	Plant Room
Location:	EM5-03

UniSA deemed:	Non-Confined Space
----------------------	---------------------------

UniSA deems a space Confined Space if either assessment criteria (shown below) results in Yes.

Number of Entrances:	1
Entry type:	Door / Gate
Access type:	Easy access

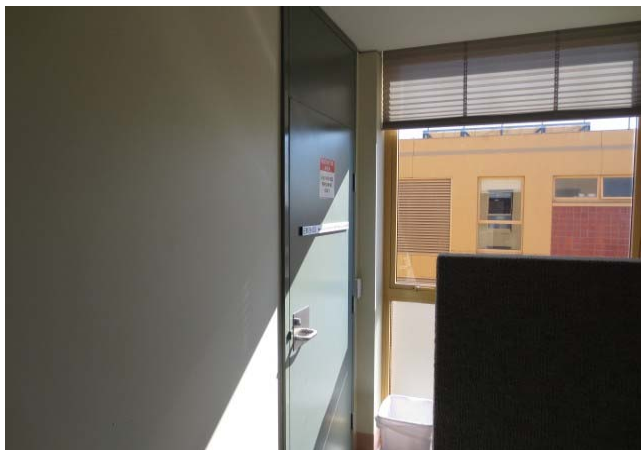
Comments:	This is a restricted space
Additional Hazards:	Slips trips and falls, Mechanical, Electrical

[View on plan](#)

[Return to Register](#)

Category	Criteria: Work Health and Safety Regulations 2012 (SA)	Result
A	Is the space enclosed or partially enclosed?	Yes
B	Is not designed or intended primarily to be occupied by a person?	No
C	Is, or is designed or intended to be, at normal atmospheric pressure while any person is in the space?	Yes
D	Is or is likely to be a risk to health and safety from:	
i)	an atmosphere that does not have a safe oxygen level?	No
ii)	contaminants, including airborne gases, vapours and dusts, that may cause injury from fire or explosion?	No
iii)	harmful concentrations of any airborne contaminants?	No
iv)	engulfment?	No
Confined Space	If the answer to A and B and C and at least one of D i), ii), iii) or iv) is Yes, then the space is a Confined Space.	No

Category	Criteria: AS2865-2009	Result
A	Is the space enclosed or partially enclosed?	Yes
B	Is not intended or designed primarily for human occupancy?	Yes
C	Has an oxygen concentration outside the safe oxygen range?	No
D	Has a concentration of airborne contaminant that may cause impairment, loss of consciousness or asphyxiation?	No
E	Has a concentration of flammable airborne contaminant that may cause injury from fire or explosion?	No
F	Has a risk of engulfment in a stored free flowing solid or a rising level of liquid that may cause suffocation or drowning?	No
Confined Space	If the answer to A and B and at least one of C, D, E or F is Yes, then the space is a Confined Space.	No



Date	Amendment details	Approved by



University of South Australia Confined Space Register 2012

Assessed by: AECOM Australia Pty Ltd

Date Assessed: 08/10/2012

Assessors: Daniel Alexander

Campus:	City West
Building:	EM
Space ID:	CW-EM-19
Description:	Comms
Location:	EM5-11b

UniSA deemed: Non-Confined Space

UniSA deems a space Confined Space if either assessment criteria (shown below) results in Yes.

Number of Entrances:	1
Entry type:	Door / Gate
Access type:	Easy access

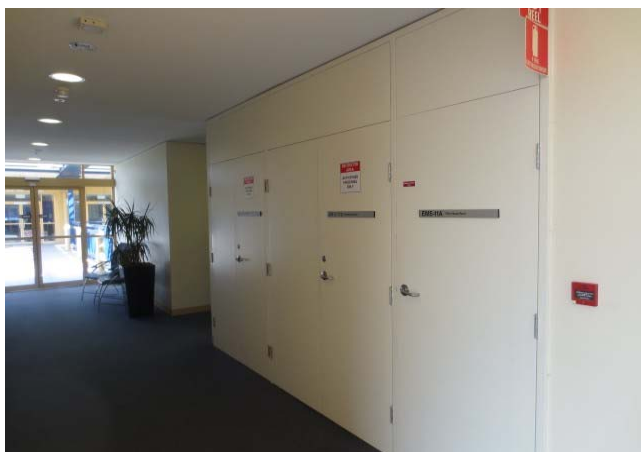
Comments:	This is a restricted space
Additional Hazards:	

[View on plan](#)

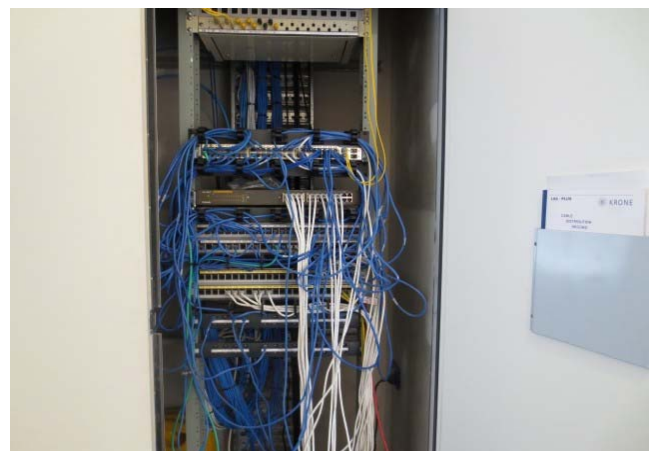
[Return to Register](#)

Category	Criteria: Work Health and Safety Regulations 2012 (SA)	Result
A	Is the space enclosed or partially enclosed?	Yes
B	Is not designed or intended primarily to be occupied by a person?	No
C	Is, or is designed or intended to be, at normal atmospheric pressure while any person is in the space?	Yes
D	Is or is likely to be a risk to health and safety from:	
i)	an atmosphere that does not have a safe oxygen level?	No
ii)	contaminants, including airborne gases, vapours and dusts, that may cause injury from fire or explosion?	No
iii)	harmful concentrations of any airborne contaminants?	No
iv)	engulfment?	No
Confined Space	If the answer to A and B and C and at least one of D i), ii), iii) or iv) is Yes, then the space is a Confined Space.	No

Category	Criteria: AS2865-2009	Result
A	Is the space enclosed or partially enclosed?	Yes
B	Is not intended or designed primarily for human occupancy?	Yes
C	Has an oxygen concentration outside the safe oxygen range?	No
D	Has a concentration of airborne contaminant that may cause impairment, loss of consciousness or asphyxiation?	No
E	Has a concentration of flammable airborne contaminant that may cause injury from fire or explosion?	No
F	Has a risk of engulfment in a stored free flowing solid or a rising level of liquid that may cause suffocation or drowning?	No
Confined Space	If the answer to A and B and at least one of C, D, E or F is Yes, then the space is a Confined Space.	No



Date	Amendment details	Approved by



University of South Australia Confined Space Register 2012

Assessed by: AECOM Australia Pty Ltd

Date Assessed: 08/10/2012

Assessors: Daniel Alexander

Campus:	City West
Building:	EM
Space ID:	CW-EM-20
Description:	Electrical Distribution Board
Location:	EM5-11c

UniSA deemed:	Non-Confined Space
----------------------	---------------------------

UniSA deems a space Confined Space if either assessment criteria (shown below) results in Yes.

Number of Entrances:	1
Entry type:	Door / Gate
Access type:	Easy access

Comments:	This is a restricted space
Additional Hazards:	Electrical

[View on plan](#)

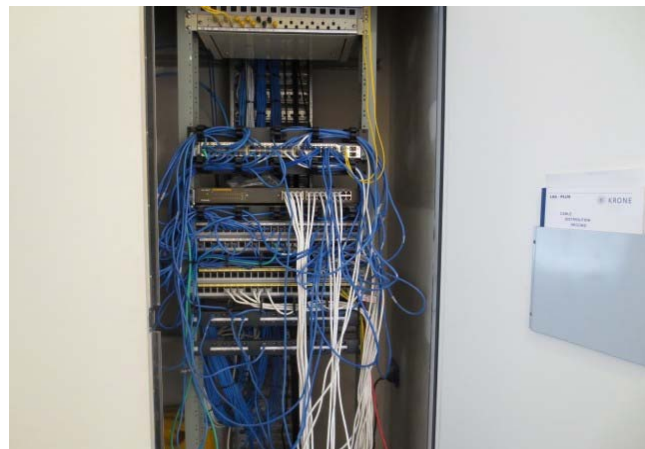
[Return to Register](#)

Category	Criteria: Work Health and Safety Regulations 2012 (SA)	Result
A	Is the space enclosed or partially enclosed?	Yes
B	Is not designed or intended primarily to be occupied by a person?	No
C	Is, or is designed or intended to be, at normal atmospheric pressure while any person is in the space?	Yes
D	Is or is likely to be a risk to health and safety from:	
i)	an atmosphere that does not have a safe oxygen level?	No
ii)	contaminants, including airborne gases, vapours and dusts, that may cause injury from fire or explosion?	No
iii)	harmful concentrations of any airborne contaminants?	No
iv)	engulfment?	No
Confined Space	If the answer to A and B and C and at least one of D i), ii), iii) or iv) is Yes, then the space is a Confined Space.	No

Category	Criteria: AS2865-2009	Result
A	Is the space enclosed or partially enclosed?	Yes
B	Is not intended or designed primarily for human occupancy?	Yes
C	Has an oxygen concentration outside the safe oxygen range?	No
D	Has a concentration of airborne contaminant that may cause impairment, loss of consciousness or asphyxiation?	No
E	Has a concentration of flammable airborne contaminant that may cause injury from fire or explosion?	No
F	Has a risk of engulfment in a stored free flowing solid or a rising level of liquid that may cause suffocation or drowning?	No
Confined Space	If the answer to A and B and at least one of C, D, E or F is Yes, then the space is a Confined Space.	No



Date	Amendment details	Approved by



University of South Australia Confined Space Register 2012

Assessed by: AECOM Australia Pty Ltd

Date Assessed: 08/10/2012

Assessors: Daniel Alexander

Campus:	City West
Building:	EM
Space ID:	CW-EM-21
Description:	Plant Room
Location:	EM5-06

UniSA deemed: Non-Confined Space

UniSA deems a space Confined Space if either assessment criteria (shown below) results in Yes.

Number of Entrances:	1
Entry type:	Door / Gate
Access type:	Easy access

Comments:	This is a restricted space
Additional Hazards:	Slips trips and falls, Mechanical, Electrical

[View on plan](#)

[Return to Register](#)

Category	Criteria: Work Health and Safety Regulations 2012 (SA)	Result
A	Is the space enclosed or partially enclosed?	Yes
B	Is not designed or intended primarily to be occupied by a person?	No
C	Is, or is designed or intended to be, at normal atmospheric pressure while any person is in the space?	Yes
D	Is or is likely to be a risk to health and safety from:	
i)	an atmosphere that does not have a safe oxygen level?	No
ii)	contaminants, including airborne gases, vapours and dusts, that may cause injury from fire or explosion?	No
iii)	harmful concentrations of any airborne contaminants?	No
iv)	engulfment?	No
Confined Space	If the answer to A and B and C and at least one of D i), ii), iii) or iv) is Yes, then the space is a Confined Space.	No

Category	Criteria: AS2865-2009	Result
A	Is the space enclosed or partially enclosed?	Yes
B	Is not intended or designed primarily for human occupancy?	Yes
C	Has an oxygen concentration outside the safe oxygen range?	No
D	Has a concentration of airborne contaminant that may cause impairment, loss of consciousness or asphyxiation?	No
E	Has a concentration of flammable airborne contaminant that may cause injury from fire or explosion?	No
F	Has a risk of engulfment in a stored free flowing solid or a rising level of liquid that may cause suffocation or drowning?	No
Confined Space	If the answer to A and B and at least one of C, D, E or F is Yes, then the space is a Confined Space.	No



Date	Amendment details	Approved by



University of South Australia Confined Space Register 2012

Assessed by: AECOM Australia Pty Ltd

Date Assessed: 08/10/2012

Assessors: Daniel Alexander

Campus:	City West
Building:	EM
Space ID:	CW-EM-22
Description:	Lift Motor Room
Location:	EM6-02

UniSA deemed:	Non-Confined Space
----------------------	---------------------------

UniSA deems a space Confined Space if either assessment criteria (shown below) results in Yes.

Number of Entrances:	1
Entry type:	Door / Gate
Access type:	Easy access

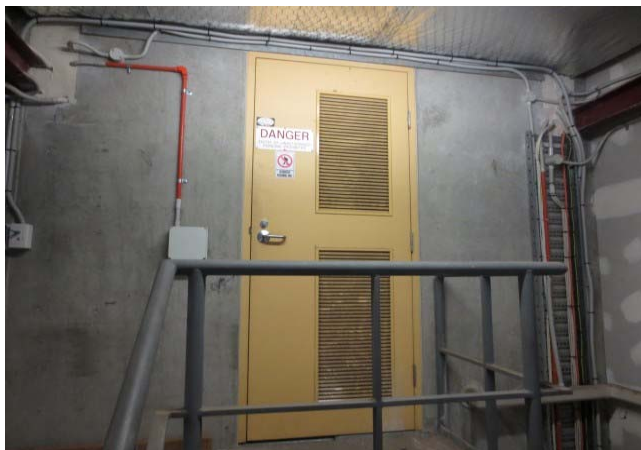
Comments:	This is a restricted space
Additional Hazards:	Slips trips and falls, Mechanical

[View on plan](#)

[Return to Register](#)

Category	Criteria: Work Health and Safety Regulations 2012 (SA)	Result
A	Is the space enclosed or partially enclosed?	Yes
B	Is not designed or intended primarily to be occupied by a person?	No
C	Is, or is designed or intended to be, at normal atmospheric pressure while any person is in the space?	Yes
D	Is or is likely to be a risk to health and safety from:	
i)	an atmosphere that does not have a safe oxygen level?	No
ii)	contaminants, including airborne gases, vapours and dusts, that may cause injury from fire or explosion?	No
iii)	harmful concentrations of any airborne contaminants?	No
iv)	engulfment?	No
Confined Space	If the answer to A and B and C and at least one of D i), ii), iii) or iv) is Yes, then the space is a Confined Space.	No

Category	Criteria: AS2865-2009	Result
A	Is the space enclosed or partially enclosed?	Yes
B	Is not intended or designed primarily for human occupancy?	Yes
C	Has an oxygen concentration outside the safe oxygen range?	No
D	Has a concentration of airborne contaminant that may cause impairment, loss of consciousness or asphyxiation?	No
E	Has a concentration of flammable airborne contaminant that may cause injury from fire or explosion?	No
F	Has a risk of engulfment in a stored free flowing solid or a rising level of liquid that may cause suffocation or drowning?	No
Confined Space	If the answer to A and B and at least one of C, D, E or F is Yes, then the space is a Confined Space.	No



Date	Amendment details	Approved by



University of South Australia Confined Space Register 2012

Assessed by: AECOM Australia Pty Ltd

Date Assessed: 08/10/2012

Assessors: Daniel Alexander

Campus:	City West
Building:	EM
Space ID:	CW-EM-23
Description:	Roof Access
Location:	via EM6-01

UniSA deemed:	Non-Confined Space
----------------------	---------------------------

UniSA deems a space Confined Space if either assessment criteria (shown below) results in Yes.

Number of Entrances:	1
Entry type:	Door / Gate
Access type:	Easy access

Comments:	This is a restricted space
Additional Hazards:	Fall from heights, Slips trips and falls, Mechanical

[View on plan](#)

[Return to Register](#)

Category	Criteria: Work Health and Safety Regulations 2012 (SA)	Result
A	Is the space enclosed or partially enclosed?	No
B	Is not designed or intended primarily to be occupied by a person?	Yes
C	Is, or is designed or intended to be, at normal atmospheric pressure while any person is in the space?	Yes
D	Is or is likely to be a risk to health and safety from:	
i)	an atmosphere that does not have a safe oxygen level?	No
ii)	contaminants, including airborne gases, vapours and dusts, that may cause injury from fire or explosion?	No
iii)	harmful concentrations of any airborne contaminants?	No
iv)	engulfment?	No
Confined Space	If the answer to A and B and C and at least one of D i), ii), iii) or iv) is Yes, then the space is a Confined Space.	No

Category	Criteria: AS2865-2009	Result
A	Is the space enclosed or partially enclosed?	No
B	Is not intended or designed primarily for human occupancy?	Yes
C	Has an oxygen concentration outside the safe oxygen range?	No
D	Has a concentration of airborne contaminant that may cause impairment, loss of consciousness or asphyxiation?	No
E	Has a concentration of flammable airborne contaminant that may cause injury from fire or explosion?	No
F	Has a risk of engulfment in a stored free flowing solid or a rising level of liquid that may cause suffocation or drowning?	No
Confined Space	If the answer to A and B and at least one of C, D, E or F is Yes, then the space is a Confined Space.	No



Date	Amendment details	Approved by



University of South Australia Confined Space Register 2012

Assessed by: AECOM Australia Pty Ltd

Date Assessed: 08/10/2012

Assessors: Daniel Alexander

Campus:	City West
Building:	EM
Space ID:	CW-EM-24
Description:	Roof Access
Location:	EM6-01

UniSA deemed:	Non-Confined Space
----------------------	---------------------------

UniSA deems a space Confined Space if either assessment criteria (shown below) results in Yes.

Number of Entrances:	1
Entry type:	Door / Gate
Access type:	Easy access

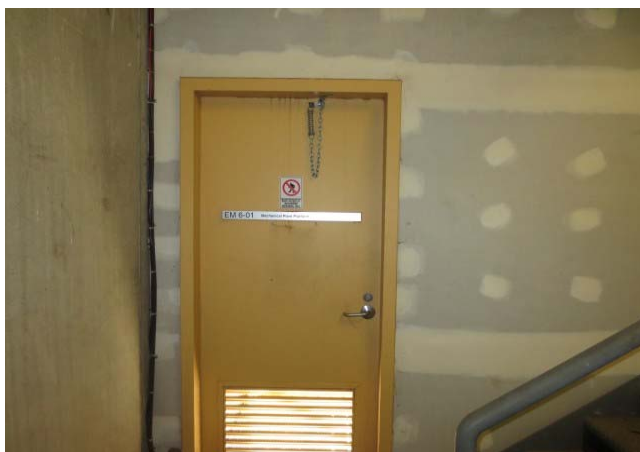
Comments:	This is a restricted space
Additional Hazards:	Fall from heights, Slips trips and falls, Mechanical

[View on plan](#)

[Return to Register](#)

Category	Criteria: Work Health and Safety Regulations 2012 (SA)	Result
A	Is the space enclosed or partially enclosed?	No
B	Is not designed or intended primarily to be occupied by a person?	Yes
C	Is, or is designed or intended to be, at normal atmospheric pressure while any person is in the space?	Yes
D	Is or is likely to be a risk to health and safety from:	
i)	an atmosphere that does not have a safe oxygen level?	No
ii)	contaminants, including airborne gases, vapours and dusts, that may cause injury from fire or explosion?	No
iii)	harmful concentrations of any airborne contaminants?	No
iv)	engulfment?	No
Confined Space	If the answer to A and B and C and at least one of D i), ii), iii) or iv) is Yes, then the space is a Confined Space.	No

Category	Criteria: AS2865-2009	Result
A	Is the space enclosed or partially enclosed?	No
B	Is not intended or designed primarily for human occupancy?	Yes
C	Has an oxygen concentration outside the safe oxygen range?	No
D	Has a concentration of airborne contaminant that may cause impairment, loss of consciousness or asphyxiation?	No
E	Has a concentration of flammable airborne contaminant that may cause injury from fire or explosion?	No
F	Has a risk of engulfment in a stored free flowing solid or a rising level of liquid that may cause suffocation or drowning?	No
Confined Space	If the answer to A and B and at least one of C, D, E or F is Yes, then the space is a Confined Space.	No



Date	Amendment details	Approved by

