



University of
South Australia

Confined Space Register 2012

Original assessment by AECOM Australia Pty Ltd



City West

Child Care Centre (Building G)

Version 1

Note: document links in blue underline text
Symbols on plans are also links

| Version No. | Date | Amendment details | Approved by |
|-------------|------------|---|-------------|
| 1 | 10/10/2012 | Original version as assessed by AECOM Australia Pty Ltd | - |
| | | | |
| | | | |
| | | | |
| | | | |
| | | | |
| | | | |

**This Confined Space Register does not remove the requirement for
contractors to complete their own work-based risk assessment.**

Please [refer to Appendix](#) for other spaces assessed.

AECOM

Declassifying Statement

AECOM's assessment of a confined space was based on the information provided by the University of South Australia (UniSA) site representative and visual observation on the day. Risk assessment and hazard identification of a confined space was classified in accordance with:

- Work Health and Safety Regulations 2012 (SA);
- AS2865-2009.

Should UniSA wish to declassify a space which AECOM has deemed to be a 'Confined Space', *section 2.4.6 of AS 2865-2009* must be adhered to as stated below.

"For a space which has previously been classified as a confined space to be reclassified as a non-confined space, it needs to have undergone sufficient changes in structure or usages to eliminate (without the need for risk control measures) all possible sources of inherent hazard that define a confined space. Any changes to a confined space would have to be such that a subsequent risk assessment would determine that it no longer meets the criteria for a confined space".

Sufficient evidence to show that the statement above has been met must be provided to the University of South Australia Facilities Management Unit who has the appropriate privilege to alter the Confined Space Register.

| Space ID | Space description | Location | Confined Space according to Work Health and Safety Regulations 2012 (SA)? | Confined Space according to AS 2865-2009? | UniSA deemed Confined Space? | Comments | Link to details | Link to Plan |
|----------|-------------------|----------|---|---|------------------------------|----------|-----------------|--------------|
|----------|-------------------|----------|---|---|------------------------------|----------|-----------------|--------------|

No Confined Spaces assessed

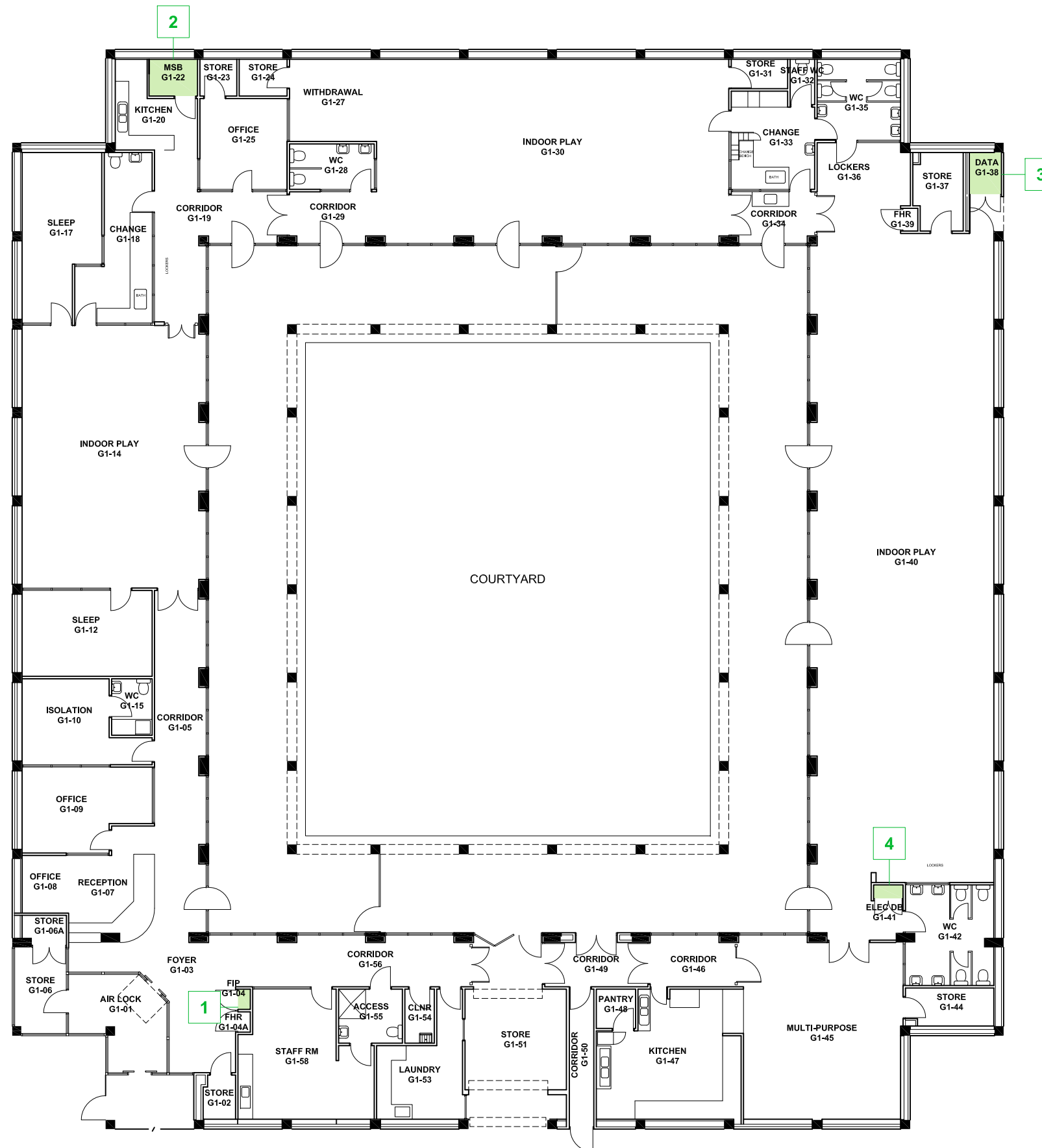
All drawings remain the property of the University of South Australia and must be returned upon request. These drawings are subject to change without notice. Any errors and/or omissions should be reported to the Facilities Management Unit.

LEGEND

RED Deemed Confined Space

GREEN Deemed Non-Confined Space

- 1 ROOM
- 1 ABOVE OR BELOW CURRENT LEVEL
- 1 WITHIN ROOM
- ▲ 1 ACCESS TO ABOVE
- ▼ 1 ACCESS TO BELOW
- ▶ 1 ACCESS DIRECTION (relative to plan)



UNIVERSITY OF
SOUTH AUSTRALIA

**FACILITIES
MANAGEMENT
UNIT**

Level 2,
101 Currie Street,
Adelaide, SA 5000
Phone 8302 2762
Fax 8302 2708

CONFINED SPACE

CITY WEST CAMPUS

Building
**CHILD CARE CENTRE
BUILDING G
LEVEL 01**

Scale:
Not to scale

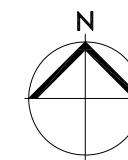
Drawn:
SMG

Last Update:
31/01/2013

Plot Date:
06/09/2012 08:49

Drawing No.:
H709CS01

Revision:
A



Appendix
Register of other spaces assessed

City West
Child Care Centre (Building G)

**This Register does not remove the requirement for
contractors to complete their own work-based risk assessment.**

Register of other spaces assessed
Assessed by AECOM Australia Pty Ltd, June to December 2012
City West
Child Care Centre (Building G)

Version 1

| Space ID | Space description | Location | Confined Space according to Work Health and Safety Regulations 2012 (SA)? | Confined Space according to AS 2865-2009? | UniSA deemed Confined Space? | Comments | Link to details | Link to Plan |
|----------|-------------------------------|----------|---|---|------------------------------|----------------------------|-------------------------|-------------------------|
| CW-G-01 | FIP | G1-04 | No | No | Non-Confined Space | This is a restricted space | CW-G-01 | Level 1 |
| CW-G-02 | MSB | G1-22 | No | No | Non-Confined Space | This is a restricted space | CW-G-02 | Level 1 |
| CW-G-03 | Comms | G1-38 | No | No | Non-Confined Space | This is a restricted space | CW-G-03 | Level 1 |
| CW-G-04 | Electrical Distribution Board | G1-41 | No | No | Non-Confined Space | This is a restricted space | CW-G-04 | Level 1 |

University of South Australia Confined Space Register 2012

Assessed by: AECOM Australia Pty Ltd

Date Assessed: 10/10/2012

Assessors: Daniel Alexander

| | |
|--------------|----------------|
| Campus: | City West |
| Building: | G |
| Space ID: | CW-G-01 |
| Description: | FIP |
| Location: | G1-04 |

| | |
|----------------------|---------------------------|
| UniSA deemed: | Non-Confined Space |
|----------------------|---------------------------|

UniSA deems a space Confined Space if either assessment criteria (shown below) results in Yes.

| | |
|-----------------------------|-------------|
| Number of Entrances: | 1 |
| Entry type: | Door / Gate |
| Access type: | Easy access |
| | |

| | |
|----------------------------|----------------------------|
| Comments: | This is a restricted space |
| Additional Hazards: | |

[View on plan](#)

[Return to Register](#)

| Category | Criteria: Work Health and Safety Regulations 2012 (SA) | Result |
|-----------------------|--|-----------|
| A | Is the space enclosed or partially enclosed? | Yes |
| B | Is not designed or intended primarily to be occupied by a person? | No |
| C | Is, or is designed or intended to be, at normal atmospheric pressure while any person is in the space? | Yes |
| D | Is or is likely to be a risk to health and safety from: | |
| i) | an atmosphere that does not have a safe oxygen level? | No |
| ii) | contaminants, including airborne gases, vapours and dusts, that may cause injury from fire or explosion? | No |
| iii) | harmful concentrations of any airborne contaminants? | No |
| iv) | engulfment? | No |
| Confined Space | If the answer to A and B and C and at least one of D i), ii), iii) or iv) is Yes, then the space is a Confined Space. | No |

| Category | Criteria: AS2865-2009 | Result |
|-----------------------|---|-----------|
| A | Is the space enclosed or partially enclosed? | Yes |
| B | Is not intended or designed primarily for human occupancy? | No |
| C | Has an oxygen concentration outside the safe oxygen range? | No |
| D | Has a concentration of airborne contaminant that may cause impairment, loss of consciousness or asphyxiation? | No |
| E | Has a concentration of flammable airborne contaminant that may cause injury from fire or explosion? | No |
| F | Has a risk of engulfment in a stored free flowing solid or a rising level of liquid that may cause suffocation or drowning? | No |
| Confined Space | If the answer to A and B and at least one of C, D, E or F is Yes, then the space is a Confined Space. | No |



| Date | Amendment details | Approved by |
|------|-------------------|-------------|
| | | |
| | | |
| | | |
| | | |
| | | |
| | | |
| | | |
| | | |



University of South Australia Confined Space Register 2012

Assessed by: AECOM Australia Pty Ltd

Date Assessed: 10/10/2012

Assessors: Daniel Alexander

| | |
|--------------|----------------|
| Campus: | City West |
| Building: | G |
| Space ID: | CW-G-02 |
| Description: | MSB |
| Location: | G1-22 |

| | |
|----------------------|---------------------------|
| UniSA deemed: | Non-Confined Space |
|----------------------|---------------------------|

UniSA deems a space Confined Space if either assessment criteria (shown below) results in Yes.

| | |
|-----------------------------|-------------|
| Number of Entrances: | 1 |
| Entry type: | Door / Gate |
| Access type: | Easy access |
| | |

| | |
|----------------------------|----------------------------|
| Comments: | This is a restricted space |
| Additional Hazards: | Electrical |

[View on plan](#)

[Return to Register](#)

| Category | Criteria: Work Health and Safety Regulations 2012 (SA) | Result |
|-----------------------|--|-----------|
| A | Is the space enclosed or partially enclosed? | Yes |
| B | Is not designed or intended primarily to be occupied by a person? | No |
| C | Is, or is designed or intended to be, at normal atmospheric pressure while any person is in the space? | Yes |
| D | Is or is likely to be a risk to health and safety from: | |
| i) | an atmosphere that does not have a safe oxygen level? | No |
| ii) | contaminants, including airborne gases, vapours and dusts, that may cause injury from fire or explosion? | No |
| iii) | harmful concentrations of any airborne contaminants? | No |
| iv) | engulfment? | No |
| Confined Space | If the answer to A and B and C and at least one of D i), ii), iii) or iv) is Yes, then the space is a Confined Space. | No |

| Category | Criteria: AS2865-2009 | Result |
|-----------------------|---|-----------|
| A | Is the space enclosed or partially enclosed? | Yes |
| B | Is not intended or designed primarily for human occupancy? | No |
| C | Has an oxygen concentration outside the safe oxygen range? | No |
| D | Has a concentration of airborne contaminant that may cause impairment, loss of consciousness or asphyxiation? | No |
| E | Has a concentration of flammable airborne contaminant that may cause injury from fire or explosion? | No |
| F | Has a risk of engulfment in a stored free flowing solid or a rising level of liquid that may cause suffocation or drowning? | No |
| Confined Space | If the answer to A and B and at least one of C, D, E or F is Yes, then the space is a Confined Space. | No |



| Date | Amendment details | Approved by |
|------|-------------------|-------------|
| | | |
| | | |
| | | |
| | | |
| | | |
| | | |
| | | |



University of South Australia Confined Space Register 2012

Assessed by: AECOM Australia Pty Ltd

Date Assessed: 10/10/2012

Assessors: Daniel Alexander

| | |
|--------------|----------------|
| Campus: | City West |
| Building: | G |
| Space ID: | CW-G-03 |
| Description: | Comms |
| Location: | G1-38 |

| | |
|----------------------|---------------------------|
| UniSA deemed: | Non-Confined Space |
|----------------------|---------------------------|

UniSA deems a space Confined Space if either assessment criteria (shown below) results in Yes.

| | |
|-----------------------------|-------------|
| Number of Entrances: | 1 |
| Entry type: | Door / Gate |
| Access type: | Easy access |
| | |

| | |
|----------------------------|----------------------------|
| Comments: | This is a restricted space |
| Additional Hazards: | |

[View on plan](#)

[Return to Register](#)

| Category | Criteria: Work Health and Safety Regulations 2012 (SA) | Result |
|-----------------------|--|-----------|
| A | Is the space enclosed or partially enclosed? | Yes |
| B | Is not designed or intended primarily to be occupied by a person? | No |
| C | Is, or is designed or intended to be, at normal atmospheric pressure while any person is in the space? | Yes |
| D | Is or is likely to be a risk to health and safety from: | |
| i) | an atmosphere that does not have a safe oxygen level? | No |
| ii) | contaminants, including airborne gases, vapours and dusts, that may cause injury from fire or explosion? | No |
| iii) | harmful concentrations of any airborne contaminants? | No |
| iv) | engulfment? | No |
| Confined Space | If the answer to A and B and C and at least one of D i), ii), iii) or iv) is Yes, then the space is a Confined Space. | No |

| Category | Criteria: AS2865-2009 | Result |
|-----------------------|---|-----------|
| A | Is the space enclosed or partially enclosed? | Yes |
| B | Is not intended or designed primarily for human occupancy? | No |
| C | Has an oxygen concentration outside the safe oxygen range? | No |
| D | Has a concentration of airborne contaminant that may cause impairment, loss of consciousness or asphyxiation? | No |
| E | Has a concentration of flammable airborne contaminant that may cause injury from fire or explosion? | No |
| F | Has a risk of engulfment in a stored free flowing solid or a rising level of liquid that may cause suffocation or drowning? | No |
| Confined Space | If the answer to A and B and at least one of C, D, E or F is Yes, then the space is a Confined Space. | No |



| Date | Amendment details | Approved by |
|------|-------------------|-------------|
| | | |
| | | |
| | | |
| | | |
| | | |
| | | |
| | | |



University of South Australia Confined Space Register 2012

Assessed by: AECOM Australia Pty Ltd

Date Assessed: 10/10/2012

Assessors: Daniel Alexander

| | |
|--------------|--------------------------------------|
| Campus: | City West |
| Building: | G |
| Space ID: | CW-G-04 |
| Description: | Electrical Distribution Board |
| Location: | G1-41 |

| | |
|----------------------|---------------------------|
| UniSA deemed: | Non-Confined Space |
|----------------------|---------------------------|

UniSA deems a space Confined Space if either assessment criteria (shown below) results in Yes.

| | |
|-----------------------------|-------------|
| Number of Entrances: | 1 |
| Entry type: | Door / Gate |
| Access type: | Easy access |
| | |

| | |
|----------------------------|----------------------------|
| Comments: | This is a restricted space |
| Additional Hazards: | Electrical |

[View on plan](#)

[Return to Register](#)

| Category | Criteria: Work Health and Safety Regulations 2012 (SA) | Result |
|-----------------------|--|-----------|
| A | Is the space enclosed or partially enclosed? | Yes |
| B | Is not designed or intended primarily to be occupied by a person? | No |
| C | Is, or is designed or intended to be, at normal atmospheric pressure while any person is in the space? | Yes |
| D | Is or is likely to be a risk to health and safety from: | |
| i) | an atmosphere that does not have a safe oxygen level? | No |
| ii) | contaminants, including airborne gases, vapours and dusts, that may cause injury from fire or explosion? | No |
| iii) | harmful concentrations of any airborne contaminants? | No |
| iv) | engulfment? | No |
| Confined Space | If the answer to A and B and C and at least one of D i), ii), iii) or iv) is Yes, then the space is a Confined Space. | No |

| Category | Criteria: AS2865-2009 | Result |
|-----------------------|---|-----------|
| A | Is the space enclosed or partially enclosed? | Yes |
| B | Is not intended or designed primarily for human occupancy? | No |
| C | Has an oxygen concentration outside the safe oxygen range? | No |
| D | Has a concentration of airborne contaminant that may cause impairment, loss of consciousness or asphyxiation? | No |
| E | Has a concentration of flammable airborne contaminant that may cause injury from fire or explosion? | No |
| F | Has a risk of engulfment in a stored free flowing solid or a rising level of liquid that may cause suffocation or drowning? | No |
| Confined Space | If the answer to A and B and at least one of C, D, E or F is Yes, then the space is a Confined Space. | No |



| Date | Amendment details | Approved by |
|------|-------------------|-------------|
| | | |
| | | |
| | | |
| | | |
| | | |
| | | |
| | | |

