



University of
South Australia

Confined Space Register 2012

Original assessment by AECOM Australia Pty Ltd



City West

Campus Site

Version 1

[View Register](#)

[View Site Plan](#)

Note: document links in blue underline text

Symbols on plans are also links

Version No.	Date	Amendment details	Approved by
1	09/10/2012	Original version as assessed by AECOM Australia Pty Ltd	-

This Confined Space Register does not remove the requirement for contractors to complete their own work-based risk assessment.

Please [refer to Appendix](#) for other spaces assessed.

[Declassifying Statement](#)

AECOM

Declassifying Statement

AECOM's assessment of a confined space was based on the information provided by the University of South Australia (UniSA) site representative and visual observation on the day. Risk assessment and hazard identification of a confined space was classified in accordance with:

- Work Health and Safety Regulations 2012 (SA);
- AS2865-2009.

Should UniSA wish to declassify a space which AECOM has deemed to be a 'Confined Space', *section 2.4.6 of AS 2865-2009* must be adhered to as stated below.

"For a space which has previously been classified as a confined space to be reclassified as a non-confined space, it needs to have undergone sufficient changes in structure or usages to eliminate (without the need for risk control measures) all possible sources of inherent hazard that define a confined space. Any changes to a confined space would have to be such that a subsequent risk assessment would determine that it no longer meets the criteria for a confined space".

Sufficient evidence to show that the statement above has been met must be provided to the University of South Australia Facilities Management Unit who has the appropriate privilege to alter the Confined Space Register.

Space ID	Space description	Location description	GPS reference	Confined Space according to Work Health and Safety Regulations 2012 (SA)?	Confined Space according to AS 2865-2009?	UniSA deemed Confined Space?	Comments	Link to details	Link to Plan
CW-site-01	Unknown Pit	Under stairwell N side of building BH	S 34°55.344' E138°35.579'	Yes	Yes	Confined Space		CW-site-01	Site
CW-site-02	Grease Trap	SW Corner Building BH	S 34°55.364' E138°35.492'	Yes	Yes	Confined Space		CW-site-02	Site
CW-site-03	Grease Trap	NE Corner Building K	S 34°55.361' E138°35.477'	Yes	Yes	Confined Space		CW-site-03	Site
CW-site-04	Stormwater	S Side Building Y	S 34°55.348' E138°35.531'	Yes	Yes	Confined Space		CW-site-04	Site
CW-site-05	Stormwater	S Side Building Y	S 34°55.346' E138°35.536'	Yes	Yes	Confined Space		CW-site-05	Site
CW-site-06	Stormwater	SE Corner Building Y	S 34°55.347' E138°35.540'	Yes	Yes	Confined Space		CW-site-06	Site
CW-site-07	Stormwater	SE Corner Building Y	S 34°55.342' E138°35.554'	Yes	Yes	Confined Space		CW-site-07	Site
CW-site-08	Sewer	N Side Building X	S 34°55.055' E138°32.809'	Yes	Yes	Confined Space		CW-site-08	Site
CW-site-09	Stormwater	S Corner Building X	S 34°55.081' E138°32.779'	Yes	Yes	Confined Space		CW-site-09	Site
CW-site-10	Stormwater	S Corner Building X	S 34°55.076' E138°32.789'	Yes	Yes	Confined Space		CW-site-10	Site
CW-site-11	Stormwater	E Corner Building X	S 34°55.070' E138°32.826'	Yes	Yes	Confined Space		CW-site-11	Site

University of South Australia Confined Space Register 2012

Assessed by: AECOM Australia Pty Ltd

Date Assessed: 09/10/2012

Assessors: Daniel Alexander

Campus:	City West
Building:	Site
Space ID:	CW-site-01
Description:	Unknown Pit
Location:	Under stairwell N side of building BH, GPS: S 34°55.344' E 138°35.579'

UniSA deemed:	Confined Space
----------------------	-----------------------

UniSA deems a space Confined Space if either assessment criteria (shown below) results in Yes.

Number of Entrances:	1
Entry type:	Gatic over pit
Access type:	Ladder

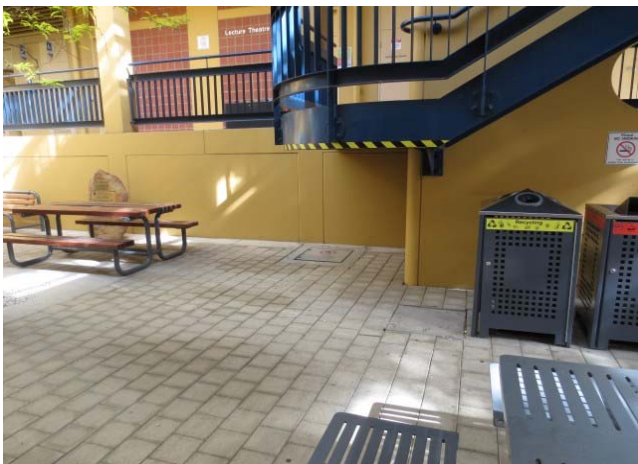
Comments:	
Additional Hazards:	Low oxygen, Asphixiant, Slips trips and falls, Manual handling, Constrained movement, Atmospheric contaminants

[View on plan](#)

[Return to Register](#)

Category	Criteria: Work Health and Safety Regulations 2012 (SA)	Result
A	Is the space enclosed or partially enclosed?	Yes
B	Is not designed or intended primarily to be occupied by a person?	Yes
C	Is, or is designed or intended to be, at normal atmospheric pressure while any person is in the space?	Yes
D	Is or is likely to be a risk to health and safety from:	
i)	an atmosphere that does not have a safe oxygen level?	Yes
ii)	contaminants, including airborne gases, vapours and dusts, that may cause injury from fire or explosion?	Yes
iii)	harmful concentrations of any airborne contaminants?	Yes
iv)	engulfment?	Yes
Confined Space	If the answer to A and B and C and at least one of D i), ii), iii) or iv) is Yes, then the space is a Confined Space.	Yes

Category	Criteria: AS2865-2009	Result
A	Is the space enclosed or partially enclosed?	Yes
B	Is not intended or designed primarily for human occupancy?	Yes
C	Has an oxygen concentration outside the safe oxygen range?	Yes
D	Has a concentration of airborne contaminant that may cause impairment, loss of consciousness or asphyxiation?	Yes
E	Has a concentration of flammable airborne contaminant that may cause injury from fire or explosion?	Yes
F	Has a risk of engulfment in a stored free flowing solid or a rising level of liquid that may cause suffocation or drowning?	Yes
Confined Space	If the answer to A and B and at least one of C, D, E or F is Yes, then the space is a Confined Space.	Yes



Date	Amendment details	Approved by

University of South Australia Confined Space Register 2012

Assessed by: AECOM Australia Pty Ltd

Date Assessed: 09/10/2012

Assessors: Daniel Alexander

Campus:	City West
Building:	Site
Space ID:	CW-site-02
Description:	Grease Trap
Location:	SW Corner Building BH, GPS: S 34°55.364' E 138°35.492'

UniSA deemed:	Confined Space
----------------------	-----------------------

UniSA deems a space Confined Space if either assessment criteria (shown below) results in Yes.

Number of Entrances:	3
Entry type:	Gatic over pit
Access type:	Ladder

Comments:	
Additional Hazards:	Low oxygen, Asphixiant, Slips trips and falls, Manual handling, Constrained movement, Atmospheric contaminants

[View on plan](#)

[Return to Register](#)

Category	Criteria: Work Health and Safety Regulations 2012 (SA)	Result
A	Is the space enclosed or partially enclosed?	Yes
B	Is not designed or intended primarily to be occupied by a person?	Yes
C	Is, or is designed or intended to be, at normal atmospheric pressure while any person is in the space?	Yes
D	Is or is likely to be a risk to health and safety from:	
i)	an atmosphere that does not have a safe oxygen level?	Yes
ii)	contaminants, including airborne gases, vapours and dusts, that may cause injury from fire or explosion?	Yes
iii)	harmful concentrations of any airborne contaminants?	Yes
iv)	engulfment?	Yes
Confined Space	If the answer to A and B and C and at least one of D i), ii), iii) or iv) is Yes, then the space is a Confined Space.	Yes

Category	Criteria: AS2865-2009	Result
A	Is the space enclosed or partially enclosed?	Yes
B	Is not intended or designed primarily for human occupancy?	Yes
C	Has an oxygen concentration outside the safe oxygen range?	Yes
D	Has a concentration of airborne contaminant that may cause impairment, loss of consciousness or asphyxiation?	Yes
E	Has a concentration of flammable airborne contaminant that may cause injury from fire or explosion?	Yes
F	Has a risk of engulfment in a stored free flowing solid or a rising level of liquid that may cause suffocation or drowning?	Yes
Confined Space	If the answer to A and B and at least one of C, D, E or F is Yes, then the space is a Confined Space.	Yes



Date	Amendment details	Approved by

University of South Australia Confined Space Register 2012

Assessed by: AECOM Australia Pty Ltd

Date Assessed: 09/10/2012

Assessors: Daniel Alexander

Campus:	City West
Building:	Site
Space ID:	CW-site-03
Description:	Grease Trap
Location:	NE Corner Building K, GPS: S 34°55.361' E 138°35.477'

UniSA deemed:	Confined Space
----------------------	-----------------------

UniSA deems a space Confined Space if either assessment criteria (shown below) results in Yes.

Number of Entrances:	4
Entry type:	Gatic over pit
Access type:	Ladder

Comments:	
Additional Hazards:	Low oxygen, Asphixiant, Slips trips and falls, Manual handling, Constrained movement, Atmospheric contaminants

[View on plan](#)

[Return to Register](#)

Category	Criteria: Work Health and Safety Regulations 2012 (SA)	Result
A	Is the space enclosed or partially enclosed?	Yes
B	Is not designed or intended primarily to be occupied by a person?	Yes
C	Is, or is designed or intended to be, at normal atmospheric pressure while any person is in the space?	Yes
D	Is or is likely to be a risk to health and safety from:	
i)	an atmosphere that does not have a safe oxygen level?	Yes
ii)	contaminants, including airborne gases, vapours and dusts, that may cause injury from fire or explosion?	Yes
iii)	harmful concentrations of any airborne contaminants?	Yes
iv)	engulfment?	Yes
Confined Space	If the answer to A and B and C and at least one of D i), ii), iii) or iv) is Yes, then the space is a Confined Space.	Yes

Category	Criteria: AS2865-2009	Result
A	Is the space enclosed or partially enclosed?	Yes
B	Is not intended or designed primarily for human occupancy?	Yes
C	Has an oxygen concentration outside the safe oxygen range?	Yes
D	Has a concentration of airborne contaminant that may cause impairment, loss of consciousness or asphyxiation?	Yes
E	Has a concentration of flammable airborne contaminant that may cause injury from fire or explosion?	Yes
F	Has a risk of engulfment in a stored free flowing solid or a rising level of liquid that may cause suffocation or drowning?	Yes
Confined Space	If the answer to A and B and at least one of C, D, E or F is Yes, then the space is a Confined Space.	Yes



Date	Amendment details	Approved by

University of South Australia Confined Space Register 2012

Assessed by: AECOM Australia Pty Ltd

Date Assessed: 09/10/2012

Assessors: Daniel Alexander

Campus:	City West
Building:	Site
Space ID:	CW-site-04
Description:	Stormwater
Location:	S Side Building Y, GPS: S 34°55.348' E 138°35.531'

UniSA deemed: Confined Space

UniSA deems a space Confined Space if either assessment criteria (shown below) results in Yes.

Number of Entrances:	1
Entry type:	Open pit
Access type:	Ladder

Comments:	
Additional Hazards:	Low oxygen, Asphixiant, Slips trips and falls, Manual handling, Constrained movement, Atmospheric contaminants

[View on plan](#)

[Return to Register](#)

Category	Criteria: Work Health and Safety Regulations 2012 (SA)	Result
A	Is the space enclosed or partially enclosed?	Yes
B	Is not designed or intended primarily to be occupied by a person?	Yes
C	Is, or is designed or intended to be, at normal atmospheric pressure while any person is in the space?	Yes
D	Is or is likely to be a risk to health and safety from:	
i)	an atmosphere that does not have a safe oxygen level?	Yes
ii)	contaminants, including airborne gases, vapours and dusts, that may cause injury from fire or explosion?	Yes
iii)	harmful concentrations of any airborne contaminants?	Yes
iv)	engulfment?	Yes
Confined Space	If the answer to A and B and C and at least one of D i), ii), iii) or iv) is Yes, then the space is a Confined Space.	Yes

Category	Criteria: AS2865-2009	Result
A	Is the space enclosed or partially enclosed?	Yes
B	Is not intended or designed primarily for human occupancy?	Yes
C	Has an oxygen concentration outside the safe oxygen range?	Yes
D	Has a concentration of airborne contaminant that may cause impairment, loss of consciousness or asphyxiation?	Yes
E	Has a concentration of flammable airborne contaminant that may cause injury from fire or explosion?	Yes
F	Has a risk of engulfment in a stored free flowing solid or a rising level of liquid that may cause suffocation or drowning?	Yes
Confined Space	If the answer to A and B and at least one of C, D, E or F is Yes, then the space is a Confined Space.	Yes



Date	Amendment details	Approved by

University of South Australia Confined Space Register 2012

Assessed by: AECOM Australia Pty Ltd

Date Assessed: 09/10/2012

Assessors: Daniel Alexander

Campus:	City West
Building:	Site
Space ID:	CW-site-05
Description:	Stormwater
Location:	S Side Building Y, GPS: S 34°55.346' E 138°35.536'

UniSA deemed: Confined Space

UniSA deems a space Confined Space if either assessment criteria (shown below) results in Yes.

Number of Entrances:	1
Entry type:	Open pit
Access type:	Ladder

Comments:	
Additional Hazards:	Low oxygen, Asphixiant, Slips trips and falls, Manual handling, Constrained movement, Atmospheric contaminants

[View on plan](#)

[Return to Register](#)

Category	Criteria: Work Health and Safety Regulations 2012 (SA)	Result
A	Is the space enclosed or partially enclosed?	Yes
B	Is not designed or intended primarily to be occupied by a person?	Yes
C	Is, or is designed or intended to be, at normal atmospheric pressure while any person is in the space?	Yes
D	Is or is likely to be a risk to health and safety from:	
i)	an atmosphere that does not have a safe oxygen level?	Yes
ii)	contaminants, including airborne gases, vapours and dusts, that may cause injury from fire or explosion?	Yes
iii)	harmful concentrations of any airborne contaminants?	Yes
iv)	engulfment?	Yes
Confined Space	If the answer to A and B and C and at least one of D i), ii), iii) or iv) is Yes, then the space is a Confined Space.	Yes

Category	Criteria: AS2865-2009	Result
A	Is the space enclosed or partially enclosed?	Yes
B	Is not intended or designed primarily for human occupancy?	Yes
C	Has an oxygen concentration outside the safe oxygen range?	Yes
D	Has a concentration of airborne contaminant that may cause impairment, loss of consciousness or asphyxiation?	Yes
E	Has a concentration of flammable airborne contaminant that may cause injury from fire or explosion?	Yes
F	Has a risk of engulfment in a stored free flowing solid or a rising level of liquid that may cause suffocation or drowning?	Yes
Confined Space	If the answer to A and B and at least one of C, D, E or F is Yes, then the space is a Confined Space.	Yes



Date	Amendment details	Approved by

University of South Australia Confined Space Register 2012

Assessed by: AECOM Australia Pty Ltd

Date Assessed: 09/10/2012

Assessors: Daniel Alexander

Campus:	City West
Building:	Site
Space ID:	CW-site-06
Description:	Stormwater
Location:	SE Corner Building Y, GPS: S 34°55.347' E 138°35.540'

UniSA deemed:	Confined Space
----------------------	-----------------------

UniSA deems a space Confined Space if either assessment criteria (shown below) results in Yes.

Number of Entrances:	1
Entry type:	Open pit
Access type:	Ladder

Comments:	
Additional Hazards:	Low oxygen, Asphixiant, Slips trips and falls, Manual handling, Constrained movement, Atmospheric contaminants

[View on plan](#)

[Return to Register](#)

Category	Criteria: Work Health and Safety Regulations 2012 (SA)	Result
A	Is the space enclosed or partially enclosed?	Yes
B	Is not designed or intended primarily to be occupied by a person?	Yes
C	Is, or is designed or intended to be, at normal atmospheric pressure while any person is in the space?	Yes
D	Is or is likely to be a risk to health and safety from:	
i)	an atmosphere that does not have a safe oxygen level?	Yes
ii)	contaminants, including airborne gases, vapours and dusts, that may cause injury from fire or explosion?	Yes
iii)	harmful concentrations of any airborne contaminants?	Yes
iv)	engulfment?	Yes
Confined Space	If the answer to A and B and C and at least one of D i), ii), iii) or iv) is Yes, then the space is a Confined Space.	Yes

Category	Criteria: AS2865-2009	Result
A	Is the space enclosed or partially enclosed?	Yes
B	Is not intended or designed primarily for human occupancy?	Yes
C	Has an oxygen concentration outside the safe oxygen range?	Yes
D	Has a concentration of airborne contaminant that may cause impairment, loss of consciousness or asphyxiation?	Yes
E	Has a concentration of flammable airborne contaminant that may cause injury from fire or explosion?	Yes
F	Has a risk of engulfment in a stored free flowing solid or a rising level of liquid that may cause suffocation or drowning?	Yes
Confined Space	If the answer to A and B and at least one of C, D, E or F is Yes, then the space is a Confined Space.	Yes



Date	Amendment details	Approved by

University of South Australia Confined Space Register 2012

Assessed by: AECOM Australia Pty Ltd

Date Assessed: 09/10/2012

Assessors: Daniel Alexander

Campus:	City West
Building:	Site
Space ID:	CW-site-07
Description:	Stormwater
Location:	SE Corner Building Y, GPS: S 34°55.342' E 138°35.554'

UniSA deemed:	Confined Space
----------------------	-----------------------

UniSA deems a space Confined Space if either assessment criteria (shown below) results in Yes.

Number of Entrances:	1
Entry type:	Open pit
Access type:	Ladder

Comments:	
Additional Hazards:	Low oxygen, Asphixiant, Slips trips and falls, Manual handling, Constrained movement, Atmospheric contaminants

[View on plan](#)

[Return to Register](#)

Category	Criteria: Work Health and Safety Regulations 2012 (SA)	Result
A	Is the space enclosed or partially enclosed?	Yes
B	Is not designed or intended primarily to be occupied by a person?	Yes
C	Is, or is designed or intended to be, at normal atmospheric pressure while any person is in the space?	Yes
D	Is or is likely to be a risk to health and safety from:	
i)	an atmosphere that does not have a safe oxygen level?	Yes
ii)	contaminants, including airborne gases, vapours and dusts, that may cause injury from fire or explosion?	Yes
iii)	harmful concentrations of any airborne contaminants?	Yes
iv)	engulfment?	Yes
Confined Space	If the answer to A and B and C and at least one of D i), ii), iii) or iv) is Yes, then the space is a Confined Space.	Yes

Category	Criteria: AS2865-2009	Result
A	Is the space enclosed or partially enclosed?	Yes
B	Is not intended or designed primarily for human occupancy?	Yes
C	Has an oxygen concentration outside the safe oxygen range?	Yes
D	Has a concentration of airborne contaminant that may cause impairment, loss of consciousness or asphyxiation?	Yes
E	Has a concentration of flammable airborne contaminant that may cause injury from fire or explosion?	Yes
F	Has a risk of engulfment in a stored free flowing solid or a rising level of liquid that may cause suffocation or drowning?	Yes
Confined Space	If the answer to A and B and at least one of C, D, E or F is Yes, then the space is a Confined Space.	Yes



Date	Amendment details	Approved by

University of South Australia Confined Space Register 2012

Assessed by: AECOM Australia Pty Ltd

Date Assessed: 09/10/2012

Assessors: Daniel Alexander

Campus:	City West
Building:	Site
Space ID:	CW-site-08
Description:	Sewer
Location:	N Side Building X, GPS: S 34°55.055' E 138°32.809'

UniSA deemed: Confined Space

UniSA deems a space Confined Space if either assessment criteria (shown below) results in Yes.

Number of Entrances:	1
Entry type:	Gatic over pit
Access type:	Ladder

Comments:	
Additional Hazards:	Low oxygen, Asphixiant, Slips trips and falls, Manual handling, Constrained movement, Atmospheric contaminants

[View on plan](#)

[Return to Register](#)

Category	Criteria: Work Health and Safety Regulations 2012 (SA)	Result
A	Is the space enclosed or partially enclosed?	Yes
B	Is not designed or intended primarily to be occupied by a person?	Yes
C	Is, or is designed or intended to be, at normal atmospheric pressure while any person is in the space?	Yes
D	Is or is likely to be a risk to health and safety from:	
i)	an atmosphere that does not have a safe oxygen level?	Yes
ii)	contaminants, including airborne gases, vapours and dusts, that may cause injury from fire or explosion?	Yes
iii)	harmful concentrations of any airborne contaminants?	Yes
iv)	engulfment?	Yes
Confined Space	If the answer to A and B and C and at least one of D i), ii), iii) or iv) is Yes, then the space is a Confined Space.	Yes

Category	Criteria: AS2865-2009	Result
A	Is the space enclosed or partially enclosed?	Yes
B	Is not intended or designed primarily for human occupancy?	Yes
C	Has an oxygen concentration outside the safe oxygen range?	Yes
D	Has a concentration of airborne contaminant that may cause impairment, loss of consciousness or asphyxiation?	Yes
E	Has a concentration of flammable airborne contaminant that may cause injury from fire or explosion?	Yes
F	Has a risk of engulfment in a stored free flowing solid or a rising level of liquid that may cause suffocation or drowning?	Yes
Confined Space	If the answer to A and B and at least one of C, D, E or F is Yes, then the space is a Confined Space.	Yes



Date	Amendment details	Approved by

University of South Australia Confined Space Register 2012

Assessed by: AECOM Australia Pty Ltd

Date Assessed: 09/10/2012

Assessors: Daniel Alexander

Campus:	City West
Building:	Site
Space ID:	CW-site-09
Description:	Stormwater
Location:	S Corner Building X, GPS: S 34°55.081' E 138°32.779'

UniSA deemed:	Confined Space
----------------------	-----------------------

UniSA deems a space Confined Space if either assessment criteria (shown below) results in Yes.

Number of Entrances:	1
Entry type:	Gatic over pit
Access type:	Ladder

Comments:	
Additional Hazards:	Low oxygen, Asphixiant, Slips trips and falls, Manual handling, Constrained movement, Atmospheric contaminants

[View on plan](#)

[Return to Register](#)

Category	Criteria: Work Health and Safety Regulations 2012 (SA)	Result
A	Is the space enclosed or partially enclosed?	Yes
B	Is not designed or intended primarily to be occupied by a person?	Yes
C	Is, or is designed or intended to be, at normal atmospheric pressure while any person is in the space?	Yes
D	Is or is likely to be a risk to health and safety from:	
i)	an atmosphere that does not have a safe oxygen level?	Yes
ii)	contaminants, including airborne gases, vapours and dusts, that may cause injury from fire or explosion?	Yes
iii)	harmful concentrations of any airborne contaminants?	Yes
iv)	engulfment?	Yes
Confined Space	If the answer to A and B and C and at least one of D i), ii), iii) or iv) is Yes, then the space is a Confined Space.	Yes

Category	Criteria: AS2865-2009	Result
A	Is the space enclosed or partially enclosed?	Yes
B	Is not intended or designed primarily for human occupancy?	Yes
C	Has an oxygen concentration outside the safe oxygen range?	Yes
D	Has a concentration of airborne contaminant that may cause impairment, loss of consciousness or asphyxiation?	Yes
E	Has a concentration of flammable airborne contaminant that may cause injury from fire or explosion?	Yes
F	Has a risk of engulfment in a stored free flowing solid or a rising level of liquid that may cause suffocation or drowning?	Yes
Confined Space	If the answer to A and B and at least one of C, D, E or F is Yes, then the space is a Confined Space.	Yes



Date	Amendment details	Approved by

University of South Australia Confined Space Register 2012

Assessed by: AECOM Australia Pty Ltd

Date Assessed: 09/10/2012

Assessors: Daniel Alexander

Campus:	City West
Building:	Site
Space ID:	CW-site-10
Description:	Stormwater
Location:	S Corner Building X, GPS: S 34°55.076' E 138°32.789'

UniSA deemed:	Confined Space
----------------------	-----------------------

UniSA deems a space Confined Space if either assessment criteria (shown below) results in Yes.

Number of Entrances:	1
Entry type:	Gatic over pit
Access type:	Ladder

Comments:	
Additional Hazards:	Low oxygen, Asphixiant, Slips trips and falls, Manual handling, Constrained movement, Atmospheric contaminants

[View on plan](#)

[Return to Register](#)

Category	Criteria: Work Health and Safety Regulations 2012 (SA)	Result
A	Is the space enclosed or partially enclosed?	Yes
B	Is not designed or intended primarily to be occupied by a person?	Yes
C	Is, or is designed or intended to be, at normal atmospheric pressure while any person is in the space?	Yes
D	Is or is likely to be a risk to health and safety from:	
i)	an atmosphere that does not have a safe oxygen level?	Yes
ii)	contaminants, including airborne gases, vapours and dusts, that may cause injury from fire or explosion?	Yes
iii)	harmful concentrations of any airborne contaminants?	Yes
iv)	engulfment?	Yes
Confined Space	If the answer to A and B and C and at least one of D i), ii), iii) or iv) is Yes, then the space is a Confined Space.	Yes

Category	Criteria: AS2865-2009	Result
A	Is the space enclosed or partially enclosed?	Yes
B	Is not intended or designed primarily for human occupancy?	Yes
C	Has an oxygen concentration outside the safe oxygen range?	Yes
D	Has a concentration of airborne contaminant that may cause impairment, loss of consciousness or asphyxiation?	Yes
E	Has a concentration of flammable airborne contaminant that may cause injury from fire or explosion?	Yes
F	Has a risk of engulfment in a stored free flowing solid or a rising level of liquid that may cause suffocation or drowning?	Yes
Confined Space	If the answer to A and B and at least one of C, D, E or F is Yes, then the space is a Confined Space.	Yes



Date	Amendment details	Approved by

University of South Australia Confined Space Register 2012

Assessed by: AECOM Australia Pty Ltd

Date Assessed: 09/10/2012

Assessors: Daniel Alexander

Campus:	City West
Building:	Site
Space ID:	CW-site-11
Description:	Stormwater
Location:	E Corner Building X, GPS: S 34°55.070' E 138°32.826'

UniSA deemed:	Confined Space
----------------------	-----------------------

UniSA deems a space Confined Space if either assessment criteria (shown below) results in Yes.

Number of Entrances:	1
Entry type:	Gatic over pit
Access type:	Ladder

Comments:	
Additional Hazards:	Low oxygen, Asphixiant, Slips trips and falls, Manual handling, Constrained movement, Atmospheric contaminants

[View on plan](#)

[Return to Register](#)

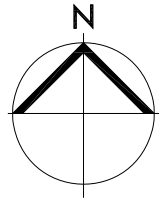
Category	Criteria: Work Health and Safety Regulations 2012 (SA)	Result
A	Is the space enclosed or partially enclosed?	Yes
B	Is not designed or intended primarily to be occupied by a person?	Yes
C	Is, or is designed or intended to be, at normal atmospheric pressure while any person is in the space?	Yes
D	Is or is likely to be a risk to health and safety from:	
i)	an atmosphere that does not have a safe oxygen level?	Yes
ii)	contaminants, including airborne gases, vapours and dusts, that may cause injury from fire or explosion?	Yes
iii)	harmful concentrations of any airborne contaminants?	Yes
iv)	engulfment?	Yes
Confined Space	If the answer to A and B and C and at least one of D i), ii), iii) or iv) is Yes, then the space is a Confined Space.	Yes

Category	Criteria: AS2865-2009	Result
A	Is the space enclosed or partially enclosed?	Yes
B	Is not intended or designed primarily for human occupancy?	Yes
C	Has an oxygen concentration outside the safe oxygen range?	Yes
D	Has a concentration of airborne contaminant that may cause impairment, loss of consciousness or asphyxiation?	Yes
E	Has a concentration of flammable airborne contaminant that may cause injury from fire or explosion?	Yes
F	Has a risk of engulfment in a stored free flowing solid or a rising level of liquid that may cause suffocation or drowning?	Yes
Confined Space	If the answer to A and B and at least one of C, D, E or F is Yes, then the space is a Confined Space.	Yes









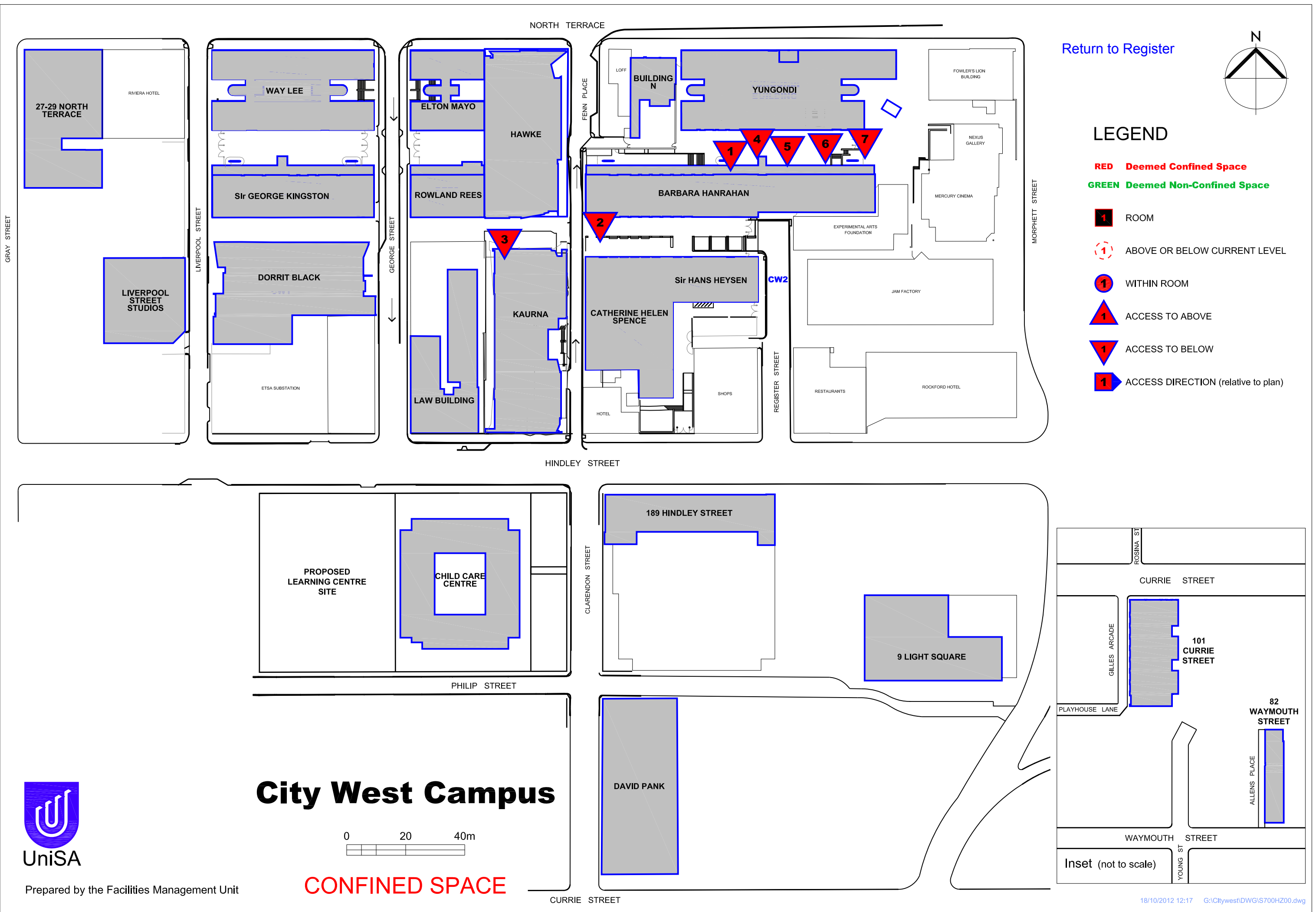
Date	Amendment details	Approved by

[Return to Register](#)

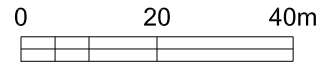


LEGEND

- RED** Deemed Confined Space
- GREEN** Deemed Non-Confined Space
-  ROOM
-  ABOVE OR BELOW CURRENT LEVEL
-  WITHIN ROOM
-  ACCESS TO ABOVE
-  ACCESS TO BELOW
-  ACCESS DIRECTION (relative to plan)



City West Campus



CONFINED SPACE



Prepared by the Facilities Management Unit

Appendix
Register of other spaces assessed

City West
Campus Site

**This Register does not remove the requirement for
contractors to complete their own work-based risk assessment.**

Space ID	Space description	Location description	GPS reference	Confined Space according to Work Health and Safety Regulations 2012 (SA)?	Confined Space according to AS 2865-2009?	UniSA deemed Confined Space?	Comments	Link to details	Link to Plan
----------	-------------------	----------------------	---------------	---	---	------------------------------	----------	-----------------	--------------

No other spaces assessed