



University of  
South Australia

## Confined Space Register 2012

Original assessment by AECOM Australia Pty Ltd



**Whyalla**

**Student Unit H (8)**

**Version 1**

Note: document links in blue underline text  
Symbols on plans are also links

Version No.	Date	Amendment details	Approved by
1	22/10/2012	Original version as assessed by AECOM Australia Pty Ltd	-

**This Confined Space Register does not remove the requirement for  
contractors to complete their own work-based risk assessment.**

Please [refer to Appendix](#) for other spaces assessed.

# AECOM

## Declassifying Statement

AECOM's assessment of a confined space was based on the information provided by the University of South Australia (UniSA) site representative and visual observation on the day. Risk assessment and hazard identification of a confined space was classified in accordance with:

- Work Health and Safety Regulations 2012 (SA);
- AS2865-2009.

Should UniSA wish to declassify a space which AECOM has deemed to be a 'Confined Space', *section 2.4.6 of AS 2865-2009* must be adhered to as stated below.

"For a space which has previously been classified as a confined space to be reclassified as a non-confined space, it needs to have undergone sufficient changes in structure or usages to eliminate (without the need for risk control measures) all possible sources of inherent hazard that define a confined space. Any changes to a confined space would have to be such that a subsequent risk assessment would determine that it no longer meets the criteria for a confined space".

Sufficient evidence to show that the statement above has been met must be provided to the University of South Australia Facilities Management Unit who has the appropriate privilege to alter the Confined Space Register.

Space ID	Space description	Location	Confined Space according to Work Health and Safety Regulations 2012 (SA)?	Confined Space according to AS 2865-2009?	UniSA deemed Confined Space?	Comments	Link to details	Link to Plan
----------	-------------------	----------	---	---	------------------------------	----------	-----------------	--------------

No Confined Spaces assessed

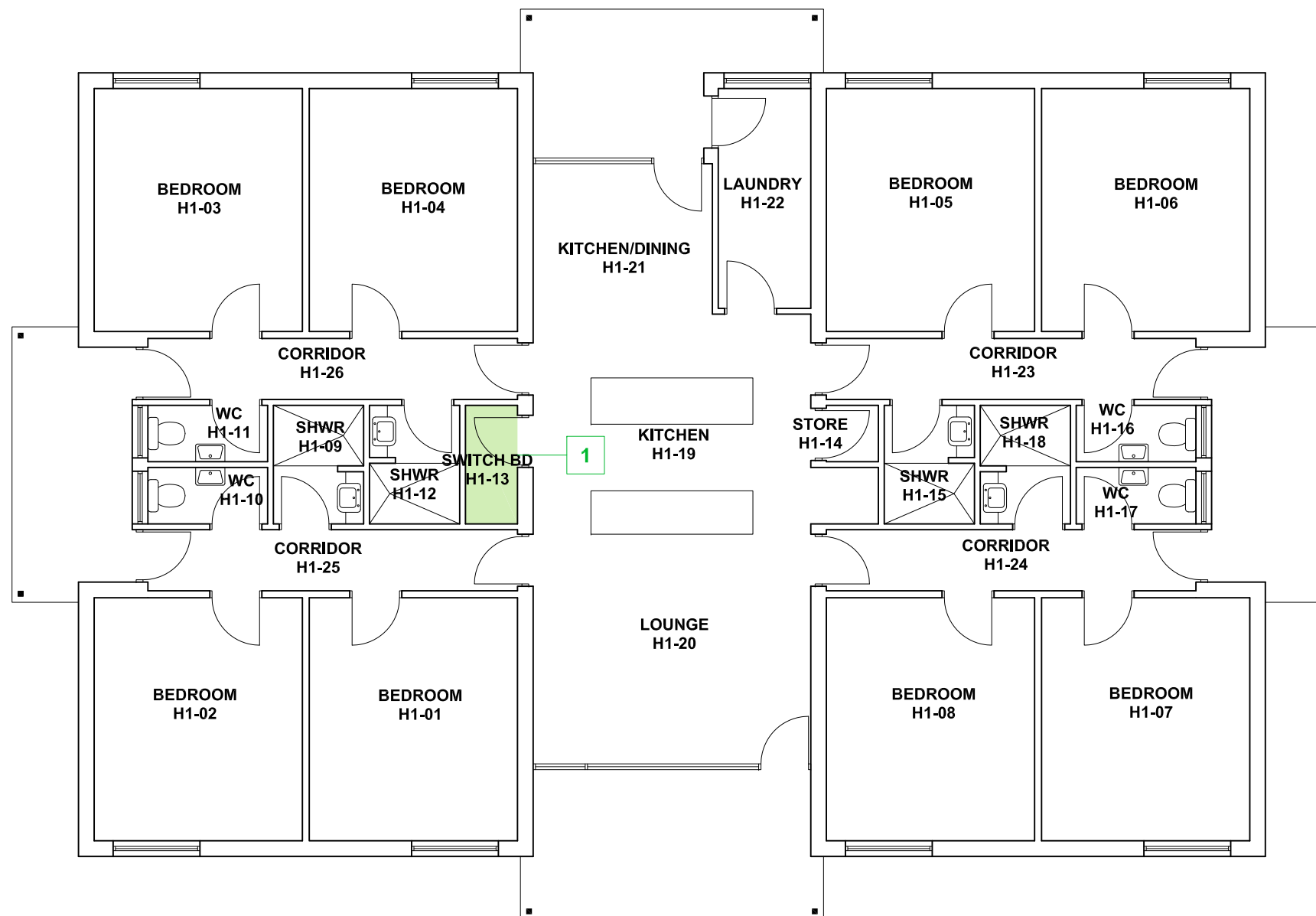
All drawings remain the property of the University of South Australia and must be returned upon request. These drawings are subject to change without notice. Any errors and/or omissions should be reported to the Facilities Management Unit.

## LEGEND

**RED** Deemed Confined Space

**GREEN** Deemed Non-Confined Space

- 1 ROOM
- 1 ABOVE OR BELOW CURRENT LEVEL
- 1 WITHIN ROOM
- ▲ 1 ACCESS TO ABOVE
- ▼ 1 ACCESS TO BELOW
- ▶ 1 ACCESS DIRECTION (relative to plan)



UNIVERSITY OF  
SOUTH AUSTRALIA

**FACILITIES  
MANAGEMENT  
UNIT**

Level 2,  
101 Currie Street,  
Adelaide, SA 5000  
Phone 8302 2762  
Fax 8302 2708

**CONFINED SPACE**

**WHYALLA CAMPUS**

Building

**STUDENT UNIT H (Unit 8)  
LEVEL 01**

Scale:  
**Not to scale**

Drawn:  
**SMG**

Last Update:  
15/01/2013

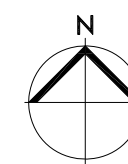
Plot Date:  
06/09/2012 08:49

Drawing No.:

**H618CS01**

Revision:

**A**



**Appendix**  
**Register of other spaces assessed**

**Whyalla**  
**Student Unit H (8)**

**This Register does not remove the requirement for  
contractors to complete their own work-based risk assessment.**

Space ID	Space description	Location	Confined Space according to Work Health and Safety Regulations 2012 (SA)?	Confined Space according to AS 2865-2009?	UniSA deemed Confined Space?	Comments	Link to details	Link to Plan
WH-H-01	Electrical Distribution Board & Comms	H1-13	No	No	Non-Confined Space	This is a restricted space	<a href="#">WH-H-01</a>	<a href="#">Level 1</a>

**University of South Australia Confined Space Register 2012**

Assessed by: AECOM Australia Pty Ltd

Date Assessed: 22/10/2012

Assessors: Daniel Alexander

Campus:	Whyalla
Building:	H
Space ID:	<b>WH-H-01</b>
Description:	<b>Electrical Distribution Board &amp; Comms</b>
Location:	H1-13

<b>UniSA deemed:</b>	<b>Non-Confined Space</b>
----------------------	---------------------------

UniSA deems a space Confined Space if either assessment criteria (shown below) results in Yes.

<b>Number of Entrances:</b>	1
<b>Entry type:</b>	Door / Gate
<b>Access type:</b>	Easy access

<b>Comments:</b>	This is a restricted space
<b>Additional Hazards:</b>	Electrical

[View on plan](#)

[Return to Register](#)

Category	Criteria: Work Health and Safety Regulations 2012 (SA)	Result
A	Is the space enclosed or partially enclosed?	Yes
B	Is not designed or intended primarily to be occupied by a person?	No
C	Is, or is designed or intended to be, at normal atmospheric pressure while any person is in the space?	Yes
D	Is or is likely to be a risk to health and safety from:	
i)	an atmosphere that does not have a safe oxygen level?	No
ii)	contaminants, including airborne gases, vapours and dusts, that may cause injury from fire or explosion?	No
iii)	harmful concentrations of any airborne contaminants?	No
iv)	engulfment?	No
<b>Confined Space</b>	If the answer to A <b>and</b> B <b>and</b> C <b>and</b> at least one of D i), ii), iii) or iv) is Yes, then the space is a Confined Space.	<b>No</b>

Category	Criteria: AS2865-2009	Result
A	Is the space enclosed or partially enclosed?	Yes
B	Is not intended or designed primarily for human occupancy?	Yes
C	Has an oxygen concentration outside the safe oxygen range?	No
D	Has a concentration of airborne contaminant that may cause impairment, loss of consciousness or asphyxiation?	No
E	Has a concentration of flammable airborne contaminant that may cause injury from fire or explosion?	No
F	Has a risk of engulfment in a stored free flowing solid or a rising level of liquid that may cause suffocation or drowning?	No
<b>Confined Space</b>	If the answer to A <b>and</b> B <b>and</b> at least one of C, D, E or F is Yes, then the space is a Confined Space.	<b>No</b>



Date	Amendment details	Approved by

