



University of  
South Australia

## Confined Space Register 2012

Original assessment by AECOM Australia Pty Ltd



**Whyalla**

**Main Building (MB)**

**Version 1**

Note: document links in blue underline text  
Symbols on plans are also links

Version No.	Date	Amendment details	Approved by
1	22/10/2012	Original version as assessed by AECOM Australia Pty Ltd	-

**This Confined Space Register does not remove the requirement for  
contractors to complete their own work-based risk assessment.**

Please [refer to Appendix](#) for other spaces assessed.

# AECOM

## Declassifying Statement

AECOM's assessment of a confined space was based on the information provided by the University of South Australia (UniSA) site representative and visual observation on the day. Risk assessment and hazard identification of a confined space was classified in accordance with:

- Work Health and Safety Regulations 2012 (SA);
- AS2865-2009.

Should UniSA wish to declassify a space which AECOM has deemed to be a 'Confined Space', *section 2.4.6 of AS 2865-2009* must be adhered to as stated below.

"For a space which has previously been classified as a confined space to be reclassified as a non-confined space, it needs to have undergone sufficient changes in structure or usages to eliminate (without the need for risk control measures) all possible sources of inherent hazard that define a confined space. Any changes to a confined space would have to be such that a subsequent risk assessment would determine that it no longer meets the criteria for a confined space".

Sufficient evidence to show that the statement above has been met must be provided to the University of South Australia Facilities Management Unit who has the appropriate privilege to alter the Confined Space Register.

Space ID	Space description	Location	Confined Space according to Work Health and Safety Regulations 2012 (SA)?	Confined Space according to AS 2865-2009?	UniSA deemed Confined Space?	Comments	Link to details	Link to Plan
WH-MB-01	Floor Space Storage	MB1-36	Yes	Yes	Confined Space		<a href="#">WH-MB-01</a>	<a href="#">Level 1</a>
WH-MB-15	Cooling Tower	MB2-81a	Yes	Yes	Confined Space		<a href="#">WH-MB-15</a>	<a href="#">Level 2</a>
WH-MB-16	Water Tank	MB2-81a	Yes	Yes	Confined Space		<a href="#">WH-MB-16</a>	<a href="#">Level 2</a>

**University of South Australia Confined Space Register 2012**

Assessed by: AECOM Australia Pty Ltd

Date Assessed: 22/10/2012

Assessors: Daniel Alexander

Campus:	Whyalla
Building:	MB
Space ID:	<b>WH-MB-01</b>
Description:	<b>Floor Space Storage</b>
Location:	MB1-36

**UniSA deemed: Confined Space**

UniSA deems a space Confined Space if either assessment criteria (shown below) results in Yes.

Number of Entrances:	1
Entry type:	Floor hatch
Access type:	Fixed step ladder

Comments:	
Additional Hazards:	Low oxygen, Head impact, Slips trips and falls, Manual handling, Constrained movement

[View on plan](#)

[Return to Register](#)

Category	Criteria: Work Health and Safety Regulations 2012 (SA)	Result
A	Is the space enclosed or partially enclosed?	Yes
B	Is not designed or intended primarily to be occupied by a person?	Yes
C	Is, or is designed or intended to be, at normal atmospheric pressure while any person is in the space?	Yes
D	Is or is likely to be a risk to health and safety from:	
i)	an atmosphere that does not have a safe oxygen level?	Yes
ii)	contaminants, including airborne gases, vapours and dusts, that may cause injury from fire or explosion?	No
iii)	harmful concentrations of any airborne contaminants?	No
iv)	engulfment?	No
<b>Confined Space</b>	If the answer to A <b>and</b> B <b>and</b> C <b>and</b> at least one of D i), ii), iii) or iv) is Yes, then the space is a Confined Space.	<b>Yes</b>

Category	Criteria: AS2865-2009	Result
A	Is the space enclosed or partially enclosed?	Yes
B	Is not intended or designed primarily for human occupancy?	Yes
C	Has an oxygen concentration outside the safe oxygen range?	Yes
D	Has a concentration of airborne contaminant that may cause impairment, loss of consciousness or asphyxiation?	No
E	Has a concentration of flammable airborne contaminant that may cause injury from fire or explosion?	No
F	Has a risk of engulfment in a stored free flowing solid or a rising level of liquid that may cause suffocation or drowning?	No
<b>Confined Space</b>	If the answer to A <b>and</b> B <b>and</b> at least one of C, D, E or F is Yes, then the space is a Confined Space.	<b>Yes</b>



Date	Amendment details	Approved by



**University of South Australia Confined Space Register 2012**

Assessed by: AECOM Australia Pty Ltd

Date Assessed: 22/10/2012

Assessors: Daniel Alexander

Campus:	Whyalla
Building:	MB
Space ID:	<b>WH-MB-15</b>
Description:	<b>Cooling Tower</b>
Location:	MB2-81a

**UniSA deemed: Confined Space**

UniSA deems a space Confined Space if either assessment criteria (shown below) results in Yes.

Number of Entrances:	1
Entry type:	Side hatch
Access type:	Requires manoeuvring

Comments:	
Additional Hazards:	Poisoning, Head impact, Constrained Movement, Manual handling, Biological, Atmospheric contaminants

[View on plan](#)

[Return to Register](#)

Category	Criteria: Work Health and Safety Regulations 2012 (SA)	Result
A	Is the space enclosed or partially enclosed?	Yes
B	Is not designed or intended primarily to be occupied by a person?	Yes
C	Is, or is designed or intended to be, at normal atmospheric pressure while any person is in the space?	Yes
D	Is or is likely to be a risk to health and safety from:	
i)	an atmosphere that does not have a safe oxygen level?	Yes
ii)	contaminants, including airborne gases, vapours and dusts, that may cause injury from fire or explosion?	Yes
iii)	harmful concentrations of any airborne contaminants?	Yes
iv)	engulfment?	Yes
<b>Confined Space</b>	If the answer to A <b>and</b> B <b>and</b> C <b>and</b> at least one of D i), ii), iii) or iv) is Yes, then the space is a Confined Space.	<b>Yes</b>

Category	Criteria: AS2865-2009	Result
A	Is the space enclosed or partially enclosed?	Yes
B	Is not intended or designed primarily for human occupancy?	Yes
C	Has an oxygen concentration outside the safe oxygen range?	No
D	Has a concentration of airborne contaminant that may cause impairment, loss of consciousness or asphyxiation?	Yes
E	Has a concentration of flammable airborne contaminant that may cause injury from fire or explosion?	No
F	Has a risk of engulfment in a stored free flowing solid or a rising level of liquid that may cause suffocation or drowning?	Yes
<b>Confined Space</b>	If the answer to A <b>and</b> B <b>and</b> at least one of C, D, E or F is Yes, then the space is a Confined Space.	<b>Yes</b>



Date	Amendment details	Approved by

**University of South Australia Confined Space Register 2012**

Assessed by: AECOM Australia Pty Ltd

Date Assessed: 22/10/2012

Assessors: Daniel Alexander

Campus:	Whyalla
Building:	MB
Space ID:	<b>WH-MB-16</b>
Description:	<b>Water Tank</b>
Location:	MB2-81a

**UniSA deemed: Confined Space**

UniSA deems a space Confined Space if either assessment criteria (shown below) results in Yes.

<b>Number of Entrances:</b>	1
<b>Entry type:</b>	Top hatch
<b>Access type:</b>	Ladder

<b>Comments:</b>	
<b>Additional Hazards:</b>	Low oxygen, Head impact, Fall from heights, Slips trips and falls, Engulfment, Constrained movement, Manual handling, Constrained movement

[View on plan](#)

[Return to Register](#)

Category	Criteria: Work Health and Safety Regulations 2012 (SA)	Result
A	Is the space enclosed or partially enclosed?	Yes
B	Is not designed or intended primarily to be occupied by a person?	Yes
C	Is, or is designed or intended to be, at normal atmospheric pressure while any person is in the space?	Yes
D	Is or is likely to be a risk to health and safety from:	
i)	an atmosphere that does not have a safe oxygen level?	Yes
ii)	contaminants, including airborne gases, vapours and dusts, that may cause injury from fire or explosion?	No
iii)	harmful concentrations of any airborne contaminants?	Yes
iv)	engulfment?	Yes
<b>Confined Space</b>	If the answer to A <b>and</b> B <b>and</b> C <b>and</b> at least one of D i), ii), iii) or iv) is Yes, then the space is a Confined Space.	<b>Yes</b>

Category	Criteria: AS2865-2009	Result
A	Is the space enclosed or partially enclosed?	Yes
B	Is not intended or designed primarily for human occupancy?	Yes
C	Has an oxygen concentration outside the safe oxygen range?	Yes
D	Has a concentration of airborne contaminant that may cause impairment, loss of consciousness or asphyxiation?	Yes
E	Has a concentration of flammable airborne contaminant that may cause injury from fire or explosion?	No
F	Has a risk of engulfment in a stored free flowing solid or a rising level of liquid that may cause suffocation or drowning?	Yes
<b>Confined Space</b>	If the answer to A <b>and</b> B <b>and</b> at least one of C, D, E or F is Yes, then the space is a Confined Space.	<b>Yes</b>



Date	Amendment details	Approved by

All drawings remain the property of the University of South Australia and must be returned upon request. These drawings are subject to change without notice. Any errors and/or omissions should be reported to the Facilities Management Unit.

## LEGEND

**RED** Deemed Confined Space

**GREEN** Deemed Non-Confined Space

**1** ROOM

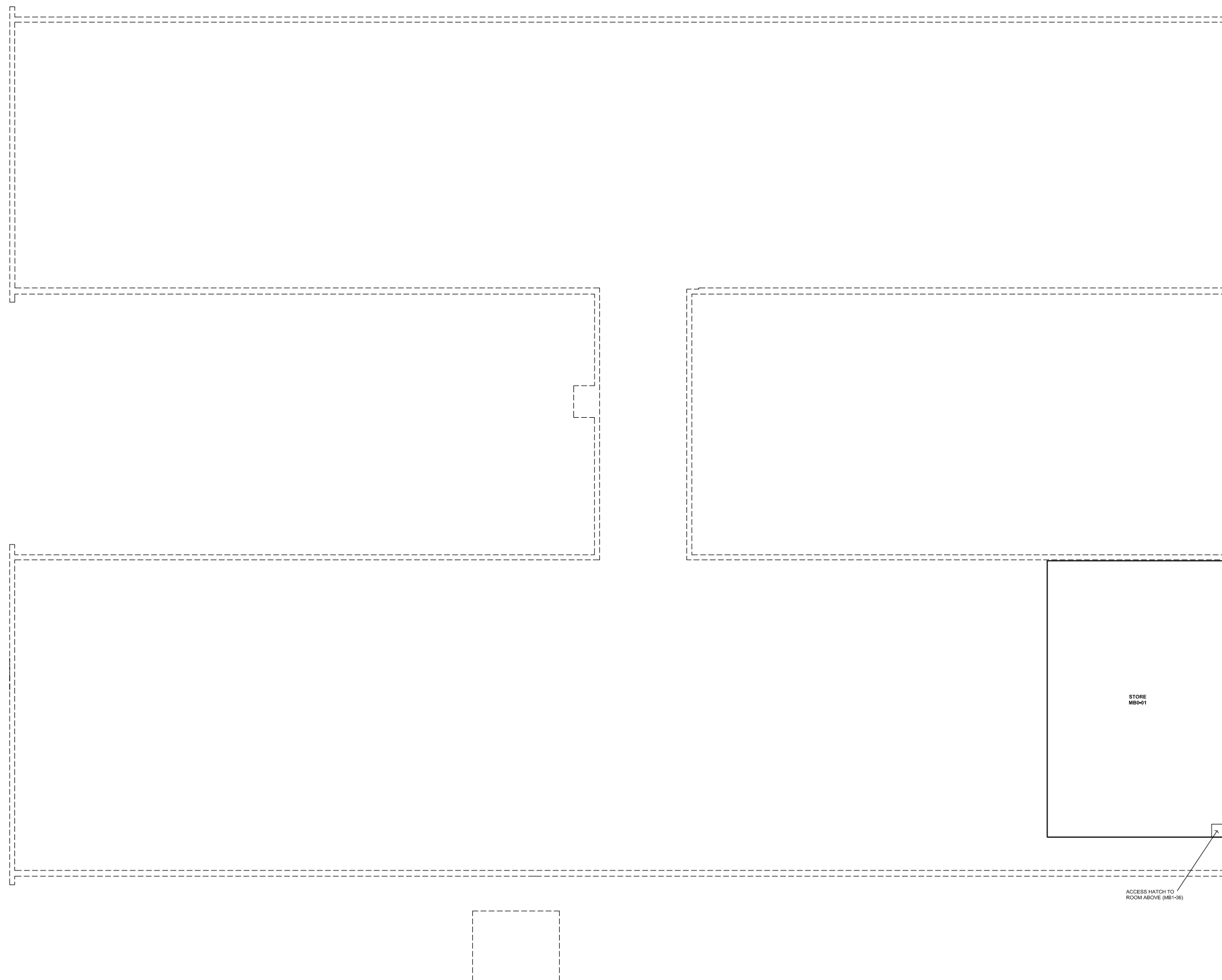
**1** ABOVE OR BELOW CURRENT LEVEL

**1** WITHIN ROOM

**1** ACCESS TO ABOVE

**1** ACCESS TO BELOW

**1** ACCESS DIRECTION (relative to plan)



UNIVERSITY OF SOUTH AUSTRALIA

**FACILITIES MANAGEMENT UNIT**

Level 2,  
101 Currie Street,  
Adelaide, SA 5000  
Phone 8302 2762  
Fax 8302 2708

**CONFINED SPACE**

**WHYALLA CAMPUS**

Building

**MAIN BUILDING MB LEVEL 00**

Scale:  
**Not to scale**

Drawn:  
**SMG**

Last Update:  
14/01/2013

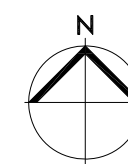
Plot Date:  
06/09/2012 08:49

Drawing No.:

**H601CS00**

Revision:

**A**



All drawings remain the property of the University of South Australia and must be returned upon request. These drawings are subject to change without notice. Any errors and/or omissions should be reported to the Facilities Management Unit.

## LEGEND

- **RED** Deemed Confined Space
- **GREEN** Deemed Non-Confined Space
- 1 ROOM
- 1 ABOVE OR BELOW CURRENT LEVEL
- 1 WITHIN ROOM
- ▲ 1 ACCESS TO ABOVE
- ▼ 1 ACCESS TO BELOW
- ▶ 1 ACCESS DIRECTION (relative to plan)



UNIVERSITY OF  
SOUTH AUSTRALIA

**FACILITIES  
MANAGEMENT  
UNIT**

Level 2,  
101 Currie Street,  
Adelaide, SA 5000  
Phone 8302 2762  
Fax 8302 2708

**CONFINED SPACE**  
**WHYALLA CAMPUS**

Building  
**MAIN  
BUILDING MB  
LEVEL 01**

Scale:  
Not to scale  
Last Update:  
15/01/2013

Drawn:  
SMG  
Plot Date:  
06/09/2012 08:49

Drawing No.:  
**H601CS01**

Revision:  
**A**



All drawings remain the property of the University of South Australia and must be returned upon request. These drawings are subject to change without notice. Any errors and/or omissions should be reported to the Facilities Management Unit.

## LEGEND

**RED** Deemed Confined Space

**GREEN** Deemed Non-Confined Space

- 1 ROOM
- 1 ABOVE OR BELOW CURRENT LEVEL
- 1 WITHIN ROOM
- ▲ 1 ACCESS TO ABOVE
- ▼ 1 ACCESS TO BELOW
- ▶ 1 ACCESS DIRECTION (relative to plan)



UNIVERSITY OF  
SOUTH AUSTRALIA

**FACILITIES  
MANAGEMENT  
UNIT**

Level 2,  
101 Currie Street,  
Adelaide. SA 5000  
Phone 8302 2762  
Fax 8302 2708

**CONFINED SPACE**

**WHYALLA CAMPUS**

Building  
**MAIN  
BUILDING MB  
LEVEL 02**

Scale:  
**Not to scale**

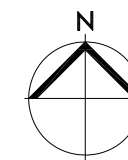
Last Update:  
**04/02/2013**

Drawn:  
**SMG**

Plot Date:  
**06/09/2012 08:49**

Drawing No.:  
**H601CS02**

Revision:  
**A**



**Appendix**  
**Register of other spaces assessed**

**Whyalla**  
**Main Building (MB)**

**This Register does not remove the requirement for  
contractors to complete their own work-based risk assessment.**

Space ID	Space description	Location	Confined Space according to Work Health and Safety Regulations 2012 (SA)?	Confined Space according to AS 2865-2009?	UniSA deemed Confined Space?	Comments	Link to details	Link to Plan
WH-MB-02	Electrical Distribution Board	MB1-65a	No	No	Non-Confined Space	This is a restricted space	<a href="#">WH-MB-02</a>	<a href="#">Level 1</a>
WH-MB-03	Comms	MB1-65b	No	No	Non-Confined Space	This is a restricted space	<a href="#">WH-MB-03</a>	<a href="#">Level 1</a>
WH-MB-04	Electrical Distribution Board	MB1-59b	No	No	Non-Confined Space	This is a restricted space	<a href="#">WH-MB-04</a>	<a href="#">Level 1</a>
WH-MB-05	Service Riser	MB1-61	No	No	Non-Confined Space	This is a restricted space	<a href="#">WH-MB-05</a>	<a href="#">Level 1</a>
WH-MB-06	Electrical Distribution Board	MB1-27	No	No	Non-Confined Space	This is a restricted space	<a href="#">WH-MB-06</a>	<a href="#">Level 1</a>
WH-MB-07	Plant Room	MB1-09	No	No	Non-Confined Space	This is a restricted space	<a href="#">WH-MB-07</a>	<a href="#">Level 1</a>
WH-MB-08	Air Handling Unit	MB1-09	No	No	Non-Confined Space	0	<a href="#">WH-MB-08</a>	<a href="#">Level 1</a>
WH-MB-09	Air Handling Unit	MB1-09	No	No	Non-Confined Space	0	<a href="#">WH-MB-09</a>	<a href="#">Level 1</a>
WH-MB-10	Plant Room	MB2-66	No	No	Non-Confined Space	This is a restricted space	<a href="#">WH-MB-10</a>	<a href="#">Level 2</a>
WH-MB-11	Air Handling Unit	MB2-66	No	No	Non-Confined Space	0	<a href="#">WH-MB-11</a>	<a href="#">Level 2</a>
WH-MB-12	Electrical Distribution Board	MB2-76	No	No	Non-Confined Space	This is a restricted space	<a href="#">WH-MB-12</a>	<a href="#">Level 2</a>
WH-MB-13	Service Riser	MB2-82a	No	No	Non-Confined Space	This is a restricted space	<a href="#">WH-MB-13</a>	<a href="#">Level 2</a>
WH-MB-14	Plant Room	MB2-81	No	No	Non-Confined Space	This is a restricted space	<a href="#">WH-MB-14</a>	<a href="#">Level 2</a>
WH-MB-17	Comms	MB2-72a	No	No	Non-Confined Space	This is a restricted space	<a href="#">WH-MB-17</a>	<a href="#">Level 2</a>
WH-MB-18	Lift Motor Room	MB1-63	No	No	Non-Confined Space	This is a restricted space	<a href="#">WH-MB-18</a>	<a href="#">Level 2</a>

**University of South Australia Confined Space Register 2012**

Assessed by: AECOM Australia Pty Ltd

Date Assessed: 22/10/2012

Assessors: Daniel Alexander

Campus:	Whyalla
Building:	MB
Space ID:	<b>WH-MB-02</b>
Description:	<b>Electrical Distribution Board</b>
Location:	MB1-65a

<b>UniSA deemed:</b>	<b>Non-Confined Space</b>
----------------------	---------------------------

UniSA deems a space Confined Space if either assessment criteria (shown below) results in Yes.

<b>Number of Entrances:</b>	1
<b>Entry type:</b>	Door / Gate
<b>Access type:</b>	Easy access

<b>Comments:</b>	This is a restricted space
<b>Additional Hazards:</b>	Electrical

[View on plan](#)

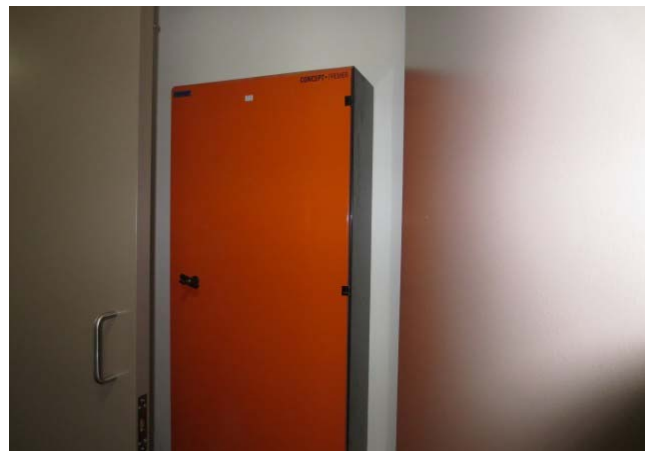
[Return to Register](#)

Category	Criteria: Work Health and Safety Regulations 2012 (SA)	Result
A	Is the space enclosed or partially enclosed?	Yes
B	Is not designed or intended primarily to be occupied by a person?	No
C	Is, or is designed or intended to be, at normal atmospheric pressure while any person is in the space?	Yes
D	Is or is likely to be a risk to health and safety from:	
i)	an atmosphere that does not have a safe oxygen level?	No
ii)	contaminants, including airborne gases, vapours and dusts, that may cause injury from fire or explosion?	No
iii)	harmful concentrations of any airborne contaminants?	No
iv)	engulfment?	No
<b>Confined Space</b>	If the answer to A <b>and</b> B <b>and</b> C <b>and</b> at least one of D i), ii), iii) or iv) is Yes, then the space is a Confined Space.	<b>No</b>

Category	Criteria: AS2865-2009	Result
A	Is the space enclosed or partially enclosed?	Yes
B	Is not intended or designed primarily for human occupancy?	Yes
C	Has an oxygen concentration outside the safe oxygen range?	No
D	Has a concentration of airborne contaminant that may cause impairment, loss of consciousness or asphyxiation?	No
E	Has a concentration of flammable airborne contaminant that may cause injury from fire or explosion?	No
F	Has a risk of engulfment in a stored free flowing solid or a rising level of liquid that may cause suffocation or drowning?	No
<b>Confined Space</b>	If the answer to A <b>and</b> B <b>and</b> at least one of C, D, E or F is Yes, then the space is a Confined Space.	<b>No</b>



Date	Amendment details	Approved by



**University of South Australia Confined Space Register 2012**

Assessed by: AECOM Australia Pty Ltd

Date Assessed: 22/10/2012

Assessors: Daniel Alexander

Campus:	Whyalla
Building:	MB
Space ID:	<b>WH-MB-03</b>
Description:	<b>Comms</b>
Location:	MB1-65b

<b>UniSA deemed:</b>	<b>Non-Confined Space</b>
----------------------	---------------------------

UniSA deems a space Confined Space if either assessment criteria (shown below) results in Yes.

<b>Number of Entrances:</b>	1
<b>Entry type:</b>	Door / Gate
<b>Access type:</b>	Easy access

<b>Comments:</b>	This is a restricted space
<b>Additional Hazards:</b>	

[View on plan](#)

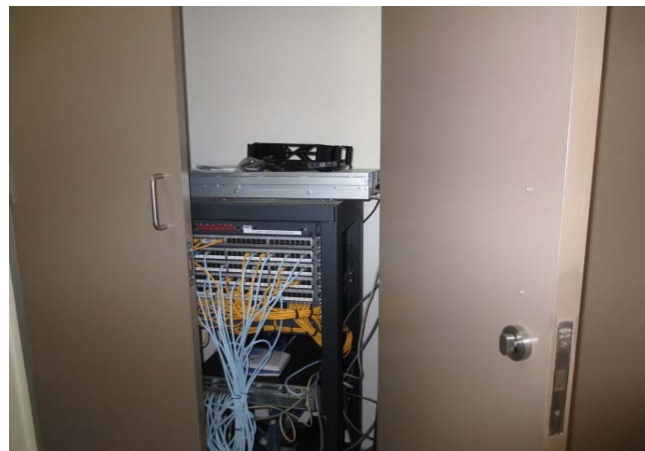
[Return to Register](#)

Category	Criteria: Work Health and Safety Regulations 2012 (SA)	Result
A	Is the space enclosed or partially enclosed?	Yes
B	Is not designed or intended primarily to be occupied by a person?	No
C	Is, or is designed or intended to be, at normal atmospheric pressure while any person is in the space?	Yes
D	Is or is likely to be a risk to health and safety from:	
i)	an atmosphere that does not have a safe oxygen level?	No
ii)	contaminants, including airborne gases, vapours and dusts, that may cause injury from fire or explosion?	No
iii)	harmful concentrations of any airborne contaminants?	No
iv)	engulfment?	No
<b>Confined Space</b>	If the answer to A <b>and</b> B <b>and</b> C <b>and</b> at least one of D i), ii), iii) or iv) is Yes, then the space is a Confined Space.	<b>No</b>

Category	Criteria: AS2865-2009	Result
A	Is the space enclosed or partially enclosed?	Yes
B	Is not intended or designed primarily for human occupancy?	Yes
C	Has an oxygen concentration outside the safe oxygen range?	No
D	Has a concentration of airborne contaminant that may cause impairment, loss of consciousness or asphyxiation?	No
E	Has a concentration of flammable airborne contaminant that may cause injury from fire or explosion?	No
F	Has a risk of engulfment in a stored free flowing solid or a rising level of liquid that may cause suffocation or drowning?	No
<b>Confined Space</b>	If the answer to A <b>and</b> B <b>and</b> at least one of C, D, E or F is Yes, then the space is a Confined Space.	<b>No</b>



Date	Amendment details	Approved by



**University of South Australia Confined Space Register 2012**

Assessed by: AECOM Australia Pty Ltd

Date Assessed: 22/10/2012

Assessors: Daniel Alexander

Campus:	Whyalla
Building:	MB
Space ID:	<b>WH-MB-04</b>
Description:	<b>Electrical Distribution Board</b>
Location:	MB1-59b

<b>UniSA deemed:</b>	<b>Non-Confined Space</b>
----------------------	---------------------------

UniSA deems a space Confined Space if either assessment criteria (shown below) results in Yes.

<b>Number of Entrances:</b>	1
<b>Entry type:</b>	Door / Gate
<b>Access type:</b>	Easy access

<b>Comments:</b>	This is a restricted space
<b>Additional Hazards:</b>	Electrical

[View on plan](#)

[Return to Register](#)

Category	Criteria: Work Health and Safety Regulations 2012 (SA)	Result
A	Is the space enclosed or partially enclosed?	Yes
B	Is not designed or intended primarily to be occupied by a person?	No
C	Is, or is designed or intended to be, at normal atmospheric pressure while any person is in the space?	Yes
D	Is or is likely to be a risk to health and safety from:	
i)	an atmosphere that does not have a safe oxygen level?	No
ii)	contaminants, including airborne gases, vapours and dusts, that may cause injury from fire or explosion?	No
iii)	harmful concentrations of any airborne contaminants?	No
iv)	engulfment?	No
<b>Confined Space</b>	If the answer to A <b>and</b> B <b>and</b> C <b>and</b> at least one of D i), ii), iii) or iv) is Yes, then the space is a Confined Space.	<b>No</b>

Category	Criteria: AS2865-2009	Result
A	Is the space enclosed or partially enclosed?	Yes
B	Is not intended or designed primarily for human occupancy?	Yes
C	Has an oxygen concentration outside the safe oxygen range?	No
D	Has a concentration of airborne contaminant that may cause impairment, loss of consciousness or asphyxiation?	No
E	Has a concentration of flammable airborne contaminant that may cause injury from fire or explosion?	No
F	Has a risk of engulfment in a stored free flowing solid or a rising level of liquid that may cause suffocation or drowning?	No
<b>Confined Space</b>	If the answer to A <b>and</b> B <b>and</b> at least one of C, D, E or F is Yes, then the space is a Confined Space.	<b>No</b>



Date	Amendment details	Approved by



**University of South Australia Confined Space Register 2012**

Assessed by: AECOM Australia Pty Ltd

Date Assessed: 22/10/2012

Assessors: Daniel Alexander

Campus:	Whyalla
Building:	MB
Space ID:	<b>WH-MB-05</b>
Description:	<b>Service Riser</b>
Location:	MB1-61

<b>UniSA deemed:</b>	<b>Non-Confined Space</b>
----------------------	---------------------------

UniSA deems a space Confined Space if either assessment criteria (shown below) results in Yes.

<b>Number of Entrances:</b>	1
<b>Entry type:</b>	Door / Gate
<b>Access type:</b>	Easy access

<b>Comments:</b>	This is a restricted space
<b>Additional Hazards:</b>	

[View on plan](#)

[Return to Register](#)

Category	Criteria: Work Health and Safety Regulations 2012 (SA)	Result
A	Is the space enclosed or partially enclosed?	Yes
B	Is not designed or intended primarily to be occupied by a person?	No
C	Is, or is designed or intended to be, at normal atmospheric pressure while any person is in the space?	Yes
D	Is or is likely to be a risk to health and safety from:	
i)	an atmosphere that does not have a safe oxygen level?	No
ii)	contaminants, including airborne gases, vapours and dusts, that may cause injury from fire or explosion?	No
iii)	harmful concentrations of any airborne contaminants?	No
iv)	engulfment?	No
<b>Confined Space</b>	If the answer to A <b>and</b> B <b>and</b> C <b>and</b> at least one of D i), ii), iii) or iv) is Yes, then the space is a Confined Space.	<b>No</b>

Category	Criteria: AS2865-2009	Result
A	Is the space enclosed or partially enclosed?	Yes
B	Is not intended or designed primarily for human occupancy?	Yes
C	Has an oxygen concentration outside the safe oxygen range?	No
D	Has a concentration of airborne contaminant that may cause impairment, loss of consciousness or asphyxiation?	No
E	Has a concentration of flammable airborne contaminant that may cause injury from fire or explosion?	No
F	Has a risk of engulfment in a stored free flowing solid or a rising level of liquid that may cause suffocation or drowning?	No
<b>Confined Space</b>	If the answer to A <b>and</b> B <b>and</b> at least one of C, D, E or F is Yes, then the space is a Confined Space.	<b>No</b>



Date	Amendment details	Approved by



**University of South Australia Confined Space Register 2012**

Assessed by: AECOM Australia Pty Ltd

Date Assessed: 22/10/2012

Assessors: Daniel Alexander

Campus:	Whyalla
Building:	MB
Space ID:	<b>WH-MB-06</b>
Description:	<b>Electrical Distribution Board</b>
Location:	MB1-27

**UniSA deemed: Non-Confined Space**

UniSA deems a space Confined Space if either assessment criteria (shown below) results in Yes.

Number of Entrances:	1
Entry type:	Door / Gate
Access type:	Easy access

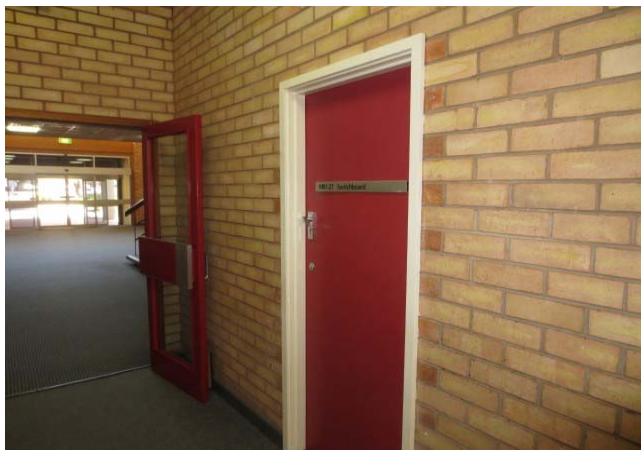
Comments:	This is a restricted space
Additional Hazards:	Electrical

[View on plan](#)

[Return to Register](#)

Category	Criteria: Work Health and Safety Regulations 2012 (SA)	Result
A	Is the space enclosed or partially enclosed?	Yes
B	Is not designed or intended primarily to be occupied by a person?	No
C	Is, or is designed or intended to be, at normal atmospheric pressure while any person is in the space?	Yes
D	Is or is likely to be a risk to health and safety from:	
i)	an atmosphere that does not have a safe oxygen level?	No
ii)	contaminants, including airborne gases, vapours and dusts, that may cause injury from fire or explosion?	No
iii)	harmful concentrations of any airborne contaminants?	No
iv)	engulfment?	No
<b>Confined Space</b>	If the answer to A <b>and</b> B <b>and</b> C <b>and</b> at least one of D i), ii), iii) or iv) is Yes, then the space is a Confined Space.	<b>No</b>

Category	Criteria: AS2865-2009	Result
A	Is the space enclosed or partially enclosed?	Yes
B	Is not intended or designed primarily for human occupancy?	Yes
C	Has an oxygen concentration outside the safe oxygen range?	No
D	Has a concentration of airborne contaminant that may cause impairment, loss of consciousness or asphyxiation?	No
E	Has a concentration of flammable airborne contaminant that may cause injury from fire or explosion?	No
F	Has a risk of engulfment in a stored free flowing solid or a rising level of liquid that may cause suffocation or drowning?	No
<b>Confined Space</b>	If the answer to A <b>and</b> B <b>and</b> at least one of C, D, E or F is Yes, then the space is a Confined Space.	<b>No</b>



Date	Amendment details	Approved by





**University of South Australia Confined Space Register 2012**

Assessed by: AECOM Australia Pty Ltd

Date Assessed: 22/10/2012

Assessors: Daniel Alexander

Campus:	Whyalla
Building:	MB
Space ID:	<b>WH-MB-07</b>
Description:	<b>Plant Room</b>
Location:	MB1-09

<b>UniSA deemed:</b>	<b>Non-Confined Space</b>
----------------------	---------------------------

UniSA deems a space Confined Space if either assessment criteria (shown below) results in Yes.

<b>Number of Entrances:</b>	1
<b>Entry type:</b>	Door / Gate
<b>Access type:</b>	Easy access

<b>Comments:</b>	This is a restricted space
<b>Additional Hazards:</b>	Mechanical, Noise, Constrained Movement

[View on plan](#)

[Return to Register](#)

Category	Criteria: Work Health and Safety Regulations 2012 (SA)	Result
A	Is the space enclosed or partially enclosed?	Yes
B	Is not designed or intended primarily to be occupied by a person?	No
C	Is, or is designed or intended to be, at normal atmospheric pressure while any person is in the space?	Yes
D	Is or is likely to be a risk to health and safety from:	
i)	an atmosphere that does not have a safe oxygen level?	No
ii)	contaminants, including airborne gases, vapours and dusts, that may cause injury from fire or explosion?	No
iii)	harmful concentrations of any airborne contaminants?	No
iv)	engulfment?	No
<b>Confined Space</b>	If the answer to A <b>and</b> B <b>and</b> C <b>and</b> at least one of D i), ii), iii) or iv) is Yes, then the space is a Confined Space.	<b>No</b>

Category	Criteria: AS2865-2009	Result
A	Is the space enclosed or partially enclosed?	Yes
B	Is not intended or designed primarily for human occupancy?	Yes
C	Has an oxygen concentration outside the safe oxygen range?	No
D	Has a concentration of airborne contaminant that may cause impairment, loss of consciousness or asphyxiation?	No
E	Has a concentration of flammable airborne contaminant that may cause injury from fire or explosion?	No
F	Has a risk of engulfment in a stored free flowing solid or a rising level of liquid that may cause suffocation or drowning?	No
<b>Confined Space</b>	If the answer to A <b>and</b> B <b>and</b> at least one of C, D, E or F is Yes, then the space is a Confined Space.	<b>No</b>



Date	Amendment details	Approved by



**University of South Australia Confined Space Register 2012**

Assessed by: AECOM Australia Pty Ltd

Date Assessed: 22/10/2012

Assessors: Daniel Alexander

Campus:	Whyalla
Building:	MB
Space ID:	<b>WH-MB-08</b>
Description:	<b>Air Handling Unit</b>
Location:	MB1-09

<b>UniSA deemed:</b>	<b>Non-Confined Space</b>
----------------------	---------------------------

UniSA deems a space Confined Space if either assessment criteria (shown below) results in Yes.

<b>Number of Entrances:</b>	1
<b>Entry type:</b>	Side hatch
<b>Access type:</b>	Requires manoeuvring

<b>Comments:</b>	
<b>Additional Hazards:</b>	Head impact, Mechanical, Cold Stress, Constrained Movement

[View on plan](#)

[Return to Register](#)

Category	Criteria: Work Health and Safety Regulations 2012 (SA)	Result
A	Is the space enclosed or partially enclosed?	Yes
B	Is not designed or intended primarily to be occupied by a person?	Yes
C	Is, or is designed or intended to be, at normal atmospheric pressure while any person is in the space?	Yes
D	Is or is likely to be a risk to health and safety from:	
i)	an atmosphere that does not have a safe oxygen level?	No
ii)	contaminants, including airborne gases, vapours and dusts, that may cause injury from fire or explosion?	No
iii)	harmful concentrations of any airborne contaminants?	No
iv)	engulfment?	No
<b>Confined Space</b>	If the answer to A <b>and</b> B <b>and</b> C <b>and</b> at least one of D i), ii), iii) or iv) is Yes, then the space is a Confined Space.	<b>No</b>

Category	Criteria: AS2865-2009	Result
A	Is the space enclosed or partially enclosed?	Yes
B	Is not intended or designed primarily for human occupancy?	Yes
C	Has an oxygen concentration outside the safe oxygen range?	No
D	Has a concentration of airborne contaminant that may cause impairment, loss of consciousness or asphyxiation?	No
E	Has a concentration of flammable airborne contaminant that may cause injury from fire or explosion?	No
F	Has a risk of engulfment in a stored free flowing solid or a rising level of liquid that may cause suffocation or drowning?	No
<b>Confined Space</b>	If the answer to A <b>and</b> B <b>and</b> at least one of C, D, E or F is Yes, then the space is a Confined Space.	<b>No</b>



Date	Amendment details	Approved by

**University of South Australia Confined Space Register 2012**

Assessed by: AECOM Australia Pty Ltd

Date Assessed: 22/10/2012

Assessors: Daniel Alexander

Campus:	Whyalla
Building:	MB
Space ID:	<b>WH-MB-09</b>
Description:	<b>Air Handling Unit</b>
Location:	MB1-09

<b>UniSA deemed:</b>	<b>Non-Confined Space</b>
----------------------	---------------------------

UniSA deems a space Confined Space if either assessment criteria (shown below) results in Yes.

<b>Number of Entrances:</b>	1
<b>Entry type:</b>	Top hatch
<b>Access type:</b>	Requires manoeuvring

<b>Comments:</b>	
<b>Additional Hazards:</b>	Head impact, Mechanical, Cold Stress, Constrained Movement

[View on plan](#)

[Return to Register](#)

Category	Criteria: Work Health and Safety Regulations 2012 (SA)	Result
A	Is the space enclosed or partially enclosed?	Yes
B	Is not designed or intended primarily to be occupied by a person?	Yes
C	Is, or is designed or intended to be, at normal atmospheric pressure while any person is in the space?	Yes
D	Is or is likely to be a risk to health and safety from:	
i)	an atmosphere that does not have a safe oxygen level?	No
ii)	contaminants, including airborne gases, vapours and dusts, that may cause injury from fire or explosion?	No
iii)	harmful concentrations of any airborne contaminants?	No
iv)	engulfment?	No
<b>Confined Space</b>	If the answer to A <b>and</b> B <b>and</b> C <b>and</b> at least one of D i), ii), iii) or iv) is Yes, then the space is a Confined Space.	<b>No</b>

Category	Criteria: AS2865-2009	Result
A	Is the space enclosed or partially enclosed?	Yes
B	Is not intended or designed primarily for human occupancy?	Yes
C	Has an oxygen concentration outside the safe oxygen range?	No
D	Has a concentration of airborne contaminant that may cause impairment, loss of consciousness or asphyxiation?	No
E	Has a concentration of flammable airborne contaminant that may cause injury from fire or explosion?	No
F	Has a risk of engulfment in a stored free flowing solid or a rising level of liquid that may cause suffocation or drowning?	No
<b>Confined Space</b>	If the answer to A <b>and</b> B <b>and</b> at least one of C, D, E or F is Yes, then the space is a Confined Space.	<b>No</b>



Date	Amendment details	Approved by

**University of South Australia Confined Space Register 2012**

Assessed by: AECOM Australia Pty Ltd

Date Assessed: 22/10/2012

Assessors: Daniel Alexander

Campus:	Whyalla
Building:	MB
Space ID:	<b>WH-MB-10</b>
Description:	<b>Plant Room</b>
Location:	MB2-66

<b>UniSA deemed:</b>	<b>Non-Confined Space</b>
----------------------	---------------------------

UniSA deems a space Confined Space if either assessment criteria (shown below) results in Yes.

<b>Number of Entrances:</b>	1
<b>Entry type:</b>	Door / Gate
<b>Access type:</b>	Easy access

<b>Comments:</b>	This is a restricted space
<b>Additional Hazards:</b>	Slips trips and falls, Mechanical, Electrical

[View on plan](#)

[Return to Register](#)

Category	Criteria: Work Health and Safety Regulations 2012 (SA)	Result
A	Is the space enclosed or partially enclosed?	Yes
B	Is not designed or intended primarily to be occupied by a person?	No
C	Is, or is designed or intended to be, at normal atmospheric pressure while any person is in the space?	Yes
D	Is or is likely to be a risk to health and safety from:	
i)	an atmosphere that does not have a safe oxygen level?	No
ii)	contaminants, including airborne gases, vapours and dusts, that may cause injury from fire or explosion?	No
iii)	harmful concentrations of any airborne contaminants?	No
iv)	engulfment?	No
<b>Confined Space</b>	If the answer to A <b>and</b> B <b>and</b> C <b>and</b> at least one of D i), ii), iii) or iv) is Yes, then the space is a Confined Space.	<b>No</b>

Category	Criteria: AS2865-2009	Result
A	Is the space enclosed or partially enclosed?	Yes
B	Is not intended or designed primarily for human occupancy?	Yes
C	Has an oxygen concentration outside the safe oxygen range?	No
D	Has a concentration of airborne contaminant that may cause impairment, loss of consciousness or asphyxiation?	No
E	Has a concentration of flammable airborne contaminant that may cause injury from fire or explosion?	No
F	Has a risk of engulfment in a stored free flowing solid or a rising level of liquid that may cause suffocation or drowning?	No
<b>Confined Space</b>	If the answer to A <b>and</b> B <b>and</b> at least one of C, D, E or F is Yes, then the space is a Confined Space.	<b>No</b>



Date	Amendment details	Approved by



**University of South Australia Confined Space Register 2012**

Assessed by: AECOM Australia Pty Ltd

Date Assessed: 22/10/2012

Assessors: Daniel Alexander

Campus:	Whyalla
Building:	MB
Space ID:	<b>WH-MB-11</b>
Description:	<b>Air Handling Unit</b>
Location:	MB2-66

<b>UniSA deemed:</b>	<b>Non-Confined Space</b>
----------------------	---------------------------

UniSA deems a space Confined Space if either assessment criteria (shown below) results in Yes.

<b>Number of Entrances:</b>	1
<b>Entry type:</b>	Side hatch
<b>Access type:</b>	Requires manoeuvring

<b>Comments:</b>	
<b>Additional Hazards:</b>	Head impact, Mechanical, Cold Stress, Constrained Movement

[View on plan](#)

[Return to Register](#)

Category	Criteria: Work Health and Safety Regulations 2012 (SA)	Result
A	Is the space enclosed or partially enclosed?	Yes
B	Is not designed or intended primarily to be occupied by a person?	Yes
C	Is, or is designed or intended to be, at normal atmospheric pressure while any person is in the space?	Yes
D	Is or is likely to be a risk to health and safety from:	
i)	an atmosphere that does not have a safe oxygen level?	No
ii)	contaminants, including airborne gases, vapours and dusts, that may cause injury from fire or explosion?	No
iii)	harmful concentrations of any airborne contaminants?	No
iv)	engulfment?	No
<b>Confined Space</b>	If the answer to A <b>and</b> B <b>and</b> C <b>and</b> at least one of D i), ii), iii) or iv) is Yes, then the space is a Confined Space.	<b>No</b>

Category	Criteria: AS2865-2009	Result
A	Is the space enclosed or partially enclosed?	Yes
B	Is not intended or designed primarily for human occupancy?	Yes
C	Has an oxygen concentration outside the safe oxygen range?	No
D	Has a concentration of airborne contaminant that may cause impairment, loss of consciousness or asphyxiation?	No
E	Has a concentration of flammable airborne contaminant that may cause injury from fire or explosion?	No
F	Has a risk of engulfment in a stored free flowing solid or a rising level of liquid that may cause suffocation or drowning?	No
<b>Confined Space</b>	If the answer to A <b>and</b> B <b>and</b> at least one of C, D, E or F is Yes, then the space is a Confined Space.	<b>No</b>



Date	Amendment details	Approved by

**University of South Australia Confined Space Register 2012**

Assessed by: AECOM Australia Pty Ltd

Date Assessed: 22/10/2012

Assessors: Daniel Alexander

Campus:	Whyalla
Building:	MB
Space ID:	<b>WH-MB-12</b>
Description:	<b>Electrical Distribution Board</b>
Location:	MB2-76

<b>UniSA deemed:</b>	<b>Non-Confined Space</b>
----------------------	---------------------------

UniSA deems a space Confined Space if either assessment criteria (shown below) results in Yes.

<b>Number of Entrances:</b>	1
<b>Entry type:</b>	Door / Gate
<b>Access type:</b>	Easy access

<b>Comments:</b>	This is a restricted space
<b>Additional Hazards:</b>	Electrical

[View on plan](#)

[Return to Register](#)

Category	Criteria: Work Health and Safety Regulations 2012 (SA)	Result
A	Is the space enclosed or partially enclosed?	Yes
B	Is not designed or intended primarily to be occupied by a person?	No
C	Is, or is designed or intended to be, at normal atmospheric pressure while any person is in the space?	Yes
D	Is or is likely to be a risk to health and safety from:	
i)	an atmosphere that does not have a safe oxygen level?	No
ii)	contaminants, including airborne gases, vapours and dusts, that may cause injury from fire or explosion?	No
iii)	harmful concentrations of any airborne contaminants?	No
iv)	engulfment?	No
<b>Confined Space</b>	If the answer to A <b>and</b> B <b>and</b> C <b>and</b> at least one of D i), ii), iii) or iv) is Yes, then the space is a Confined Space.	<b>No</b>

Category	Criteria: AS2865-2009	Result
A	Is the space enclosed or partially enclosed?	Yes
B	Is not intended or designed primarily for human occupancy?	Yes
C	Has an oxygen concentration outside the safe oxygen range?	No
D	Has a concentration of airborne contaminant that may cause impairment, loss of consciousness or asphyxiation?	No
E	Has a concentration of flammable airborne contaminant that may cause injury from fire or explosion?	No
F	Has a risk of engulfment in a stored free flowing solid or a rising level of liquid that may cause suffocation or drowning?	No
<b>Confined Space</b>	If the answer to A <b>and</b> B <b>and</b> at least one of C, D, E or F is Yes, then the space is a Confined Space.	<b>No</b>



Date	Amendment details	Approved by



**University of South Australia Confined Space Register 2012**

Assessed by: AECOM Australia Pty Ltd

Date Assessed: 22/10/2012

Assessors: Daniel Alexander

Campus:	Whyalla
Building:	MB
Space ID:	<b>WH-MB-13</b>
Description:	<b>Service Riser</b>
Location:	MB2-82a

<b>UniSA deemed:</b>	<b>Non-Confined Space</b>
----------------------	---------------------------

UniSA deems a space Confined Space if either assessment criteria (shown below) results in Yes.

<b>Number of Entrances:</b>	1
<b>Entry type:</b>	Door / Gate
<b>Access type:</b>	Easy access

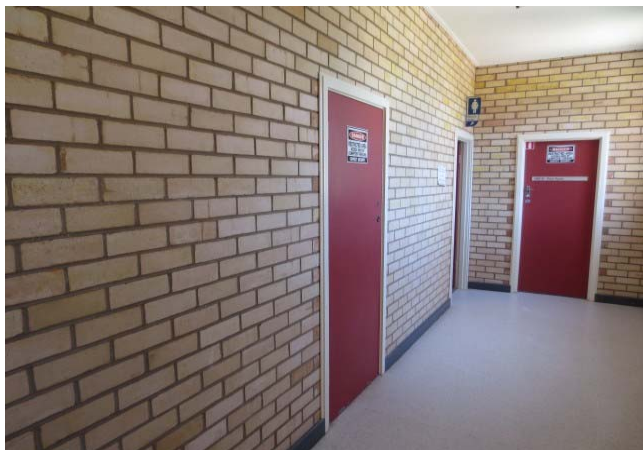
<b>Comments:</b>	This is a restricted space
<b>Additional Hazards:</b>	

[View on plan](#)

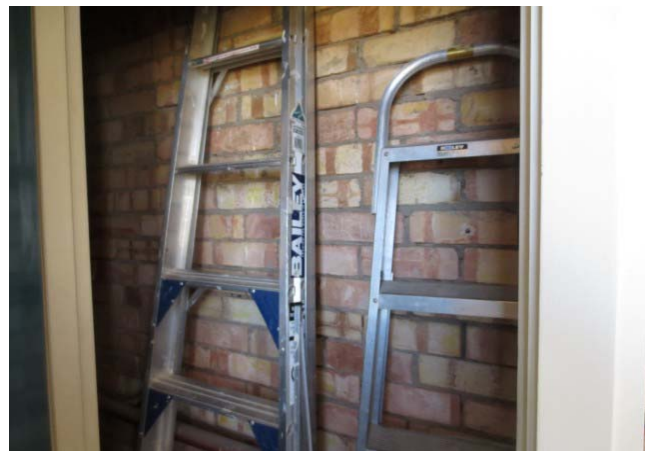
[Return to Register](#)

Category	Criteria: Work Health and Safety Regulations 2012 (SA)	Result
A	Is the space enclosed or partially enclosed?	Yes
B	Is not designed or intended primarily to be occupied by a person?	No
C	Is, or is designed or intended to be, at normal atmospheric pressure while any person is in the space?	Yes
D	Is or is likely to be a risk to health and safety from:	
i)	an atmosphere that does not have a safe oxygen level?	No
ii)	contaminants, including airborne gases, vapours and dusts, that may cause injury from fire or explosion?	No
iii)	harmful concentrations of any airborne contaminants?	No
iv)	engulfment?	No
<b>Confined Space</b>	If the answer to A <b>and</b> B <b>and</b> C <b>and</b> at least one of D i), ii), iii) or iv) is Yes, then the space is a Confined Space.	<b>No</b>

Category	Criteria: AS2865-2009	Result
A	Is the space enclosed or partially enclosed?	Yes
B	Is not intended or designed primarily for human occupancy?	Yes
C	Has an oxygen concentration outside the safe oxygen range?	No
D	Has a concentration of airborne contaminant that may cause impairment, loss of consciousness or asphyxiation?	No
E	Has a concentration of flammable airborne contaminant that may cause injury from fire or explosion?	No
F	Has a risk of engulfment in a stored free flowing solid or a rising level of liquid that may cause suffocation or drowning?	No
<b>Confined Space</b>	If the answer to A <b>and</b> B <b>and</b> at least one of C, D, E or F is Yes, then the space is a Confined Space.	<b>No</b>



Date	Amendment details	Approved by



**University of South Australia Confined Space Register 2012**

Assessed by: AECOM Australia Pty Ltd

Date Assessed: 22/10/2012

Assessors: Daniel Alexander

Campus:	Whyalla
Building:	MB
Space ID:	<b>WH-MB-14</b>
Description:	<b>Plant Room</b>
Location:	MB2-81

<b>UniSA deemed:</b>	<b>Non-Confined Space</b>
----------------------	---------------------------

UniSA deems a space Confined Space if either assessment criteria (shown below) results in Yes.

<b>Number of Entrances:</b>	1
<b>Entry type:</b>	Door / Gate
<b>Access type:</b>	Easy access

<b>Comments:</b>	This is a restricted space
<b>Additional Hazards:</b>	Slips trips and falls, Mechanical, Electrical

[View on plan](#)

[Return to Register](#)

Category	Criteria: Work Health and Safety Regulations 2012 (SA)	Result
A	Is the space enclosed or partially enclosed?	Yes
B	Is not designed or intended primarily to be occupied by a person?	No
C	Is, or is designed or intended to be, at normal atmospheric pressure while any person is in the space?	Yes
D	Is or is likely to be a risk to health and safety from:	
i)	an atmosphere that does not have a safe oxygen level?	No
ii)	contaminants, including airborne gases, vapours and dusts, that may cause injury from fire or explosion?	No
iii)	harmful concentrations of any airborne contaminants?	No
iv)	engulfment?	No
<b>Confined Space</b>	If the answer to A <b>and</b> B <b>and</b> C <b>and</b> at least one of D i), ii), iii) or iv) is Yes, then the space is a Confined Space.	<b>No</b>

Category	Criteria: AS2865-2009	Result
A	Is the space enclosed or partially enclosed?	Yes
B	Is not intended or designed primarily for human occupancy?	Yes
C	Has an oxygen concentration outside the safe oxygen range?	No
D	Has a concentration of airborne contaminant that may cause impairment, loss of consciousness or asphyxiation?	No
E	Has a concentration of flammable airborne contaminant that may cause injury from fire or explosion?	No
F	Has a risk of engulfment in a stored free flowing solid or a rising level of liquid that may cause suffocation or drowning?	No
<b>Confined Space</b>	If the answer to A <b>and</b> B <b>and</b> at least one of C, D, E or F is Yes, then the space is a Confined Space.	<b>No</b>



Date	Amendment details	Approved by



**University of South Australia Confined Space Register 2012**

Assessed by: AECOM Australia Pty Ltd

Date Assessed: 22/10/2012

Assessors: Daniel Alexander

Campus:	Whyalla
Building:	MB
Space ID:	<b>WH-MB-17</b>
Description:	<b>Comms</b>
Location:	MB2-72a

<b>UniSA deemed:</b>	<b>Non-Confined Space</b>
----------------------	---------------------------

UniSA deems a space Confined Space if either assessment criteria (shown below) results in Yes.

<b>Number of Entrances:</b>	1
<b>Entry type:</b>	Door / Gate
<b>Access type:</b>	Easy access

<b>Comments:</b>	This is a restricted space
<b>Additional Hazards:</b>	

[View on plan](#)

[Return to Register](#)

Category	Criteria: Work Health and Safety Regulations 2012 (SA)	Result
A	Is the space enclosed or partially enclosed?	Yes
B	Is not designed or intended primarily to be occupied by a person?	No
C	Is, or is designed or intended to be, at normal atmospheric pressure while any person is in the space?	Yes
D	Is or is likely to be a risk to health and safety from:	
i)	an atmosphere that does not have a safe oxygen level?	No
ii)	contaminants, including airborne gases, vapours and dusts, that may cause injury from fire or explosion?	No
iii)	harmful concentrations of any airborne contaminants?	No
iv)	engulfment?	No
<b>Confined Space</b>	If the answer to A <b>and</b> B <b>and</b> C <b>and</b> at least one of D i), ii), iii) or iv) is Yes, then the space is a Confined Space.	<b>No</b>

Category	Criteria: AS2865-2009	Result
A	Is the space enclosed or partially enclosed?	Yes
B	Is not intended or designed primarily for human occupancy?	Yes
C	Has an oxygen concentration outside the safe oxygen range?	No
D	Has a concentration of airborne contaminant that may cause impairment, loss of consciousness or asphyxiation?	No
E	Has a concentration of flammable airborne contaminant that may cause injury from fire or explosion?	No
F	Has a risk of engulfment in a stored free flowing solid or a rising level of liquid that may cause suffocation or drowning?	No
<b>Confined Space</b>	If the answer to A <b>and</b> B <b>and</b> at least one of C, D, E or F is Yes, then the space is a Confined Space.	<b>No</b>



Date	Amendment details	Approved by



**University of South Australia Confined Space Register 2012**

Assessed by: AECOM Australia Pty Ltd

Date Assessed: 22/10/2012

Assessors: Daniel Alexander

Campus:	Whyalla
Building:	MB
Space ID:	<b>WH-MB-18</b>
Description:	<b>Lift Motor Room</b>
Location:	MB1-63

<b>UniSA deemed:</b>	<b>Non-Confined Space</b>
----------------------	---------------------------

UniSA deems a space Confined Space if either assessment criteria (shown below) results in Yes.

<b>Number of Entrances:</b>	1
<b>Entry type:</b>	Door / Gate
<b>Access type:</b>	Easy access

<b>Comments:</b>	This is a restricted space
<b>Additional Hazards:</b>	Mechanical

[View on plan](#)

[Return to Register](#)

Category	Criteria: Work Health and Safety Regulations 2012 (SA)	Result
A	Is the space enclosed or partially enclosed?	Yes
B	Is not designed or intended primarily to be occupied by a person?	No
C	Is, or is designed or intended to be, at normal atmospheric pressure while any person is in the space?	Yes
D	Is or is likely to be a risk to health and safety from:	
i)	an atmosphere that does not have a safe oxygen level?	No
ii)	contaminants, including airborne gases, vapours and dusts, that may cause injury from fire or explosion?	No
iii)	harmful concentrations of any airborne contaminants?	No
iv)	engulfment?	No
<b>Confined Space</b>	If the answer to A <b>and</b> B <b>and</b> C <b>and</b> at least one of D i), ii), iii) or iv) is Yes, then the space is a Confined Space.	<b>No</b>

Category	Criteria: AS2865-2009	Result
A	Is the space enclosed or partially enclosed?	Yes
B	Is not intended or designed primarily for human occupancy?	Yes
C	Has an oxygen concentration outside the safe oxygen range?	No
D	Has a concentration of airborne contaminant that may cause impairment, loss of consciousness or asphyxiation?	No
E	Has a concentration of flammable airborne contaminant that may cause injury from fire or explosion?	No
F	Has a risk of engulfment in a stored free flowing solid or a rising level of liquid that may cause suffocation or drowning?	No
<b>Confined Space</b>	If the answer to A <b>and</b> B <b>and</b> at least one of C, D, E or F is Yes, then the space is a Confined Space.	<b>No</b>



Date	Amendment details	Approved by