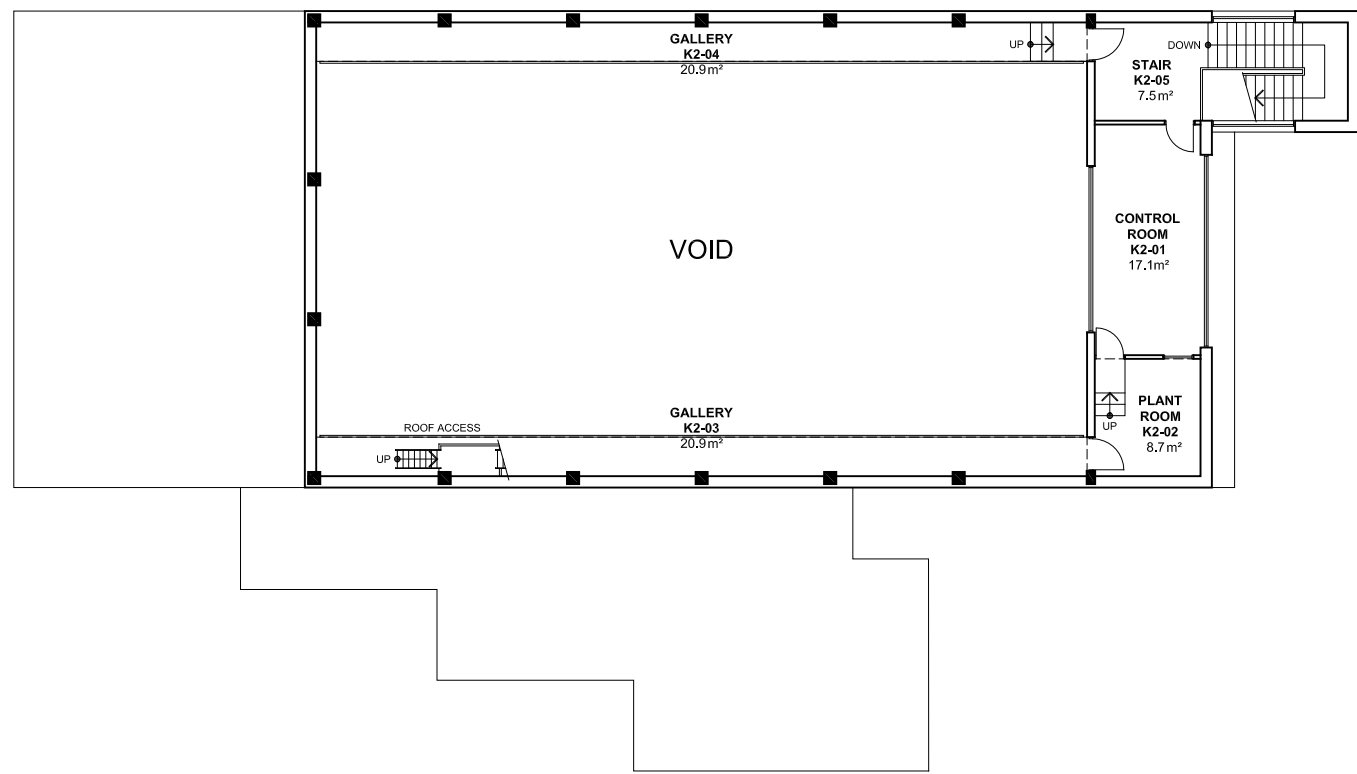


2 4 6 8 10m 20 40 60

NOTES:
Building Records drawings remain the property of the University of South Australia and must be returned upon request.
These drawings may be inaccurate, and are subject to change without notice. Any errors and/or omissions should be reported to the Facilities Management Unit.



UNIVERSITY OF SOUTH AUSTRALIA

FACILITIES MANAGEMENT UNIT
101 Currie Street,
Adelaide, SA 5000
Phone 8302 2762
Fax 8302 2708

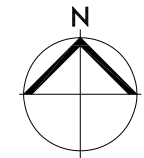
**BUILDING RECORDS
MAWSON LAKES CAMPUS**

Building

**BUILDING K
LEVEL 2**

Scale: Refer to scale bar
Drawn: J Hvalica

Last Update: 21/08/2018



Drawing No.: **A509PL02 - W**
Revision: **E**