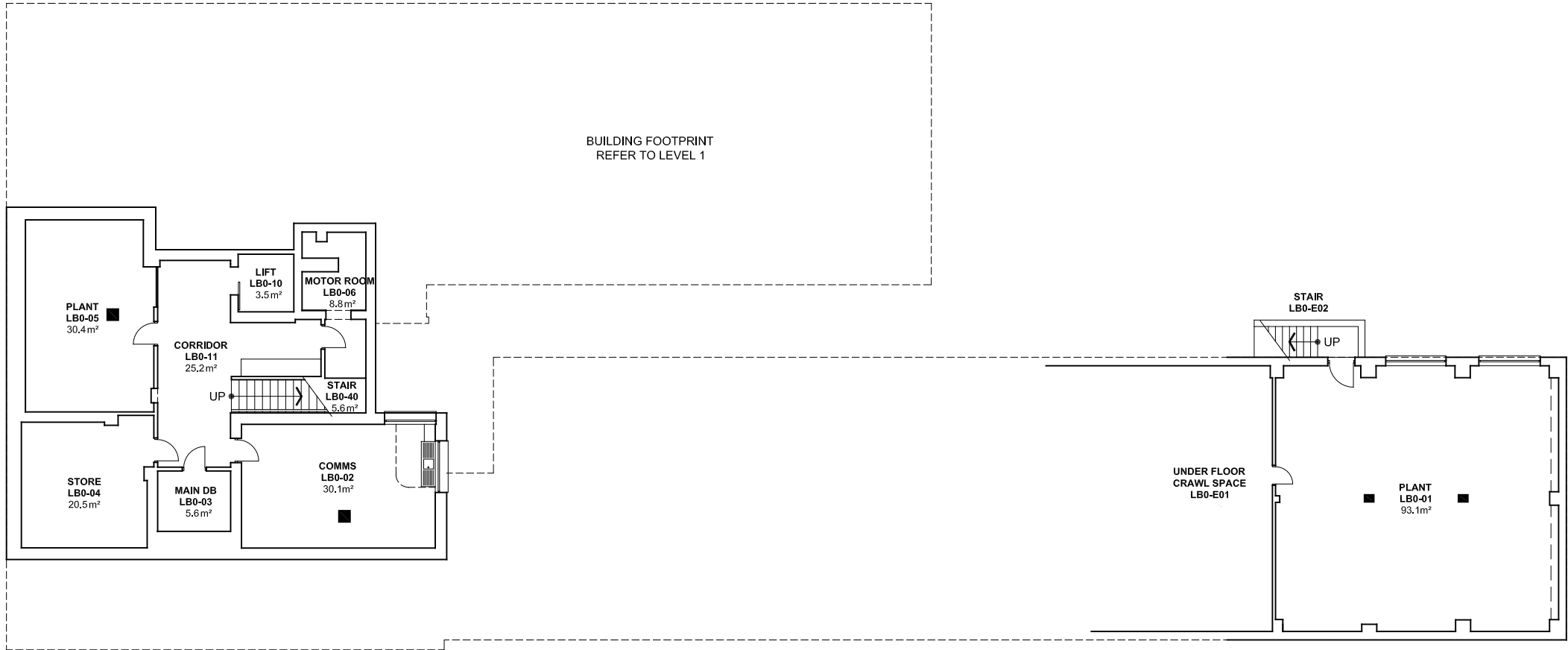




NOTES:
Building Records drawings remain the property of the University of South Australia and must be returned upon request.
These drawings may be inaccurate, and are subject to change without notice. Any errors and/or omissions should be reported to the Facilities Management Unit.



UNIVERSITY OF
SOUTH AUSTRALIA

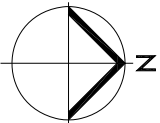
FACILITIES
MANAGEMENT
UNIT

101 Currie Street,
Adelaide. SA 5000

BUILDING RECORDS
CITY WEST CAMPUS

Building
LEWIS O'BRIEN
BUILDING LB
LEVEL 00

Scale: Refer to scale bar	Drawn: J Hvalica
Last Update: 17/11/2021	



Drawing No.: A723PL00 - W	Revision: E
-------------------------------------	-----------------------