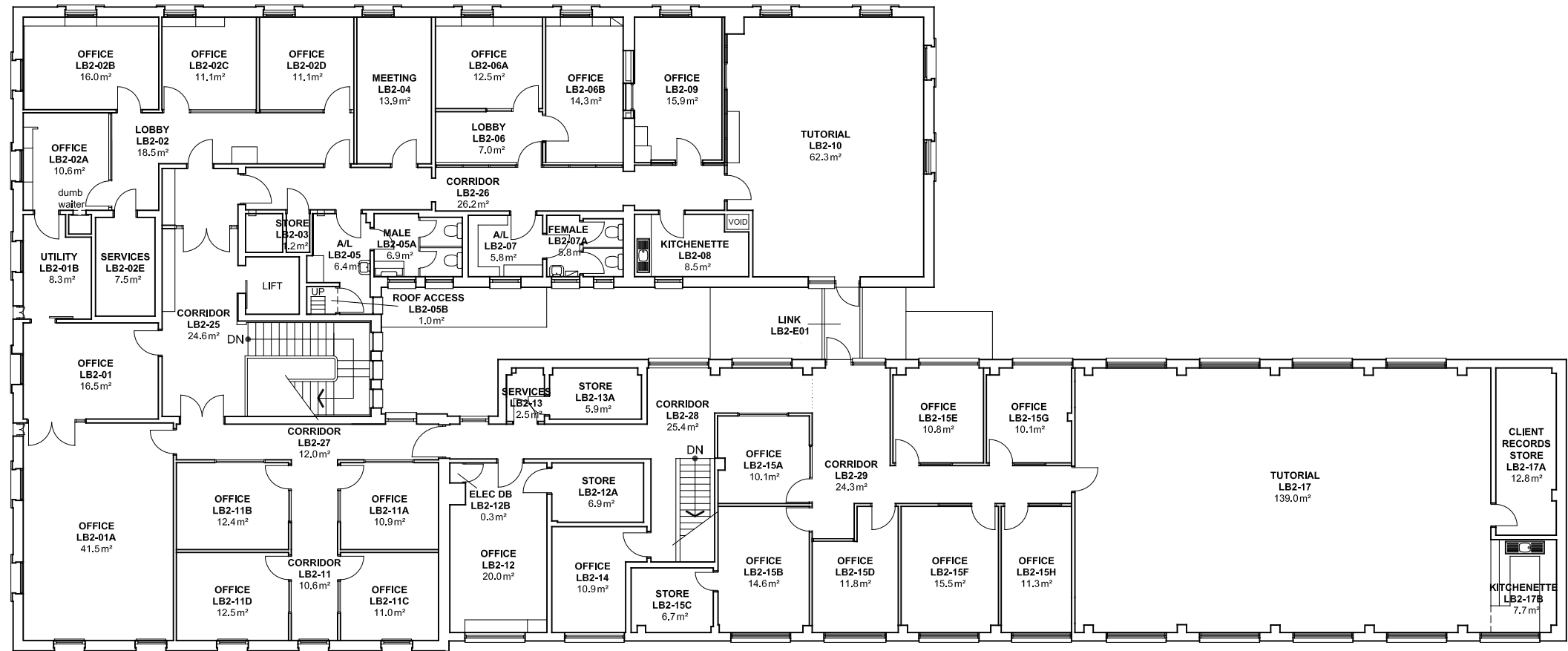


2 4 6 8 10m 20 40 60

**NOTES:**  
 Building Records drawings remain the property of the University of South Australia and must be returned upon request.  
 These drawings may be inaccurate, and are subject to change without notice. Any errors and/or omissions should be reported to the Facilities Management Unit.



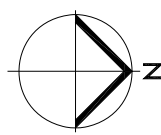
UNIVERSITY OF SOUTH AUSTRALIA

FACILITIES MANAGEMENT UNIT  
 101 Currie Street, Adelaide, SA 5000

BUILDING RECORDS  
 CITY WEST CAMPUS

Building  
 LEWIS O'BRIEN  
 BUILDING LB  
 LEVEL 2

Scale: Refer to scale bar  
 Drawn: J Hvalica  
 Last Update: 17/11/2021



Drawing No.: A723PL02 - W  
 Revision: M